

Thomson One Banker Analytics

Thomson ONE Banker's allows you to look, compare, and extract financial data for more than 60,000 domestic and global companies. Also, users can create customized reports, models and templates using the Microsoft® Excel Add-in.

You can access Thomson One by clicking on **All Databases and Electronic Resources** link from the **Quick Start** area of the Gordon Library web site wpi.edu/+library. From there, you can either click on **Databases by Subject ▶ Company ▶ Thomson One Banker Analytics**.

Off-campus? WPI Community members may connect through our [proxy server](#) to gain access.

NOTE: A new version of Thomson One Banker application is available by connecting at top to **try the NEW Thomson ONE Banker at the top of their screen. This will replace the old Thomson One soon**, so you may consider trying this upgraded version but it is not perfected (could give you errors). It's very similar but the menu items are oriented on the left, instead of across the top.

Other Company Databases

Try also [Hoovers](#) you will get useful information about companies, competitors, and industry information. To search for articles about the companies, try **Wall Street Journal – ProQuest** which has archives of the WSJ back to 1984, as well as **EBSCO Business Source Premier** which allows you to search full text of business and management journals and magazines.

Thomson One's key applications are divided in three modes, see tabs across the left top of the screen. These are **Companies**, **Indices** and **Portfolios**.

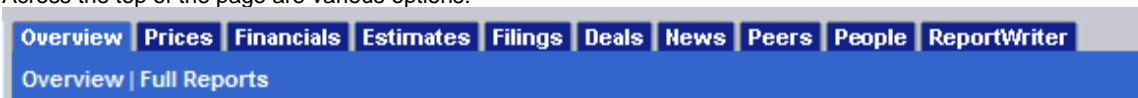


- The **Companies tab** allows you to locate the specific company you wish to research. Type in the name of the company or an identifying key like a ticker symbol or CUSIP.
- The **Indices tab** lets you view key market information such as the Datastream Index Performance Overview, Interactive Price Chart and reports, and Datastream Index Performance Summary.
- The **Portfolios tab** allows you to create a set or access a set of reports to compare financials, pricing, earnings, performance, and obtain news wires. After creating a set of companies, the Custom Tab allows you to specify the data you'd like to compare, such as Gross Profit Margin, Sales, employee growth rate and many other variables.

Company Information

Enter the company, to view the **Overview** page, which offers a business description, key financials, recent news, a stock price chart, estimate revisions and forecasts. Each section features a hotlink so you can go directly to a more detailed report. The latest stock quotes for the company appear at left. Choose **Full Reports** to view more detail about the company.

Across the top of the page are various options:



Thomson One Options

Such as **Prices**, **Financials**, **Earnings/Estimates**, **Peers**, **Filings**, **News** and **Report Writer**. Each have additional drop-down menus to access financial reports and charts about the company.

Suppose you wanted to find out more about EMC. What's its financial situation? Would they be a good company to choose to be the subject of a case study?

To find out, go to **Financials** and then **Fundamental Ratios**. Choose a database. Under **Worldscope Ratios**, then **Annual Ratios**. This path will bring you to a spreadsheet with **Profitability**, **Asset Utilization** and **Liquidity**, everything you needed to know.

Overview | Prices | Financials | Estimates | Filings | Deals | News | Peers | People | ReportWriter download data

Overview | Financial Statements | Financial Ratios | Growth Ratios | More Print | Excel | Email | Related Content

Glossary >> Thomson Ratios Annual Ratios 5Yr Average Ratios Report Ratios Report

Sample Ratio Report

EMC Corp. Symbol: (C000001547)

<http://www.emc.com> CUSIP: [268648102](#) Price 8/31/2006 Shrs Out (th) Mkt Cap (th)

Exchange: NYSE DCN: [E594320000](#) 11.65 2,298,488 25,812,018

Country: USA ISIN: [US2686481027](#)

DJ Sector: Technology PE Ratio Tot Ret 1Yr Beta

DJ Industry: Computers 24.41 -25.86 1.242

Company Status: Active

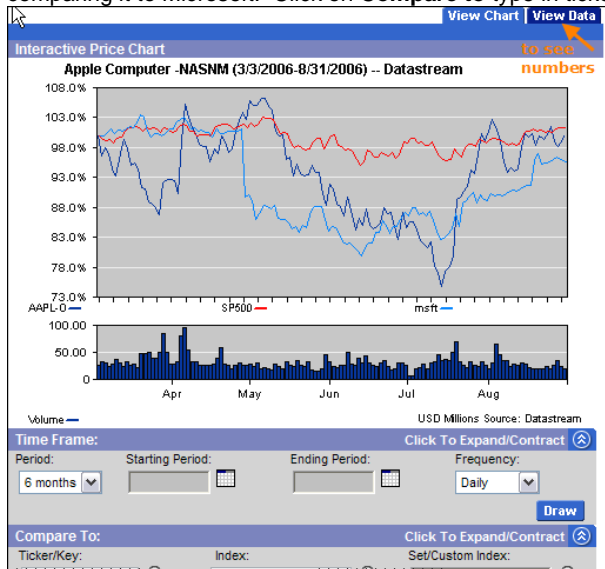
Currency: USD
Source: ThomsonFinancial

PROFITABILITY RATIOS	12/31/05	12/31/04	12/31/03	12/31/02	12/31/01
Return On Assets	7.07	5.95	4.23	-1.15	-4.91
Return On Invested Capital	9.55	7.73	5.45	-1.49	-6.26
Cash Flow To Sales	20.47	22.63	17.30	12.84	9.42
Cost of Goods Sold To Sales	39.64	41.30	46.08	50.15	46.15
Gross Profit Margin	53.73	51.21	45.57	37.83	44.62
Operating Profit Margin	16.37	13.37	7.49	-7.40	0.29
Pretax Margin	17.10	14.40	9.16	-5.45	-8.14

Sample Ratio Report

Icons to the upper right of the report let you customize it, change the numeric scale, change the currency, and export the report to Excel. **NOTE:** You must have Excel installed on your PC to use this utility. **You can also print** from any of the screens by clicking on the **Print icon** in the upper right hand corner of the screen.

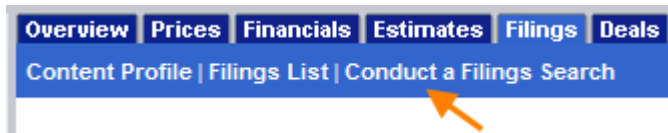
An Interactive Price Chart, available by following the path Prices ► Interactive Charts, lets you examine the movement of a company's stock over time. Let's look at one year's movement of Apple Computer, with frequency set at monthly, comparing it to Microsoft. Click on **Compare to** type in ticker symbol, then click **Draw**.



Sample Interactive Price Chart

Searching Full Text of Current & Historical 10-K and other SEC Filings

Search for a company, then choose **Filings** ► **Conduct a Filing Search** (new window will pop-up, turn your pop-up blocker off)



Looking at Other Merger & Acquisition Deals

Search for a company, then choose **Deals** tab.

EMC Corp. Symbol: EMC-N (C000001547)

176 South Street
Hopkinton, MASSACHUSETTS 01748 USA
<http://www.emc.com>

Exchange: NYSE CUSIP: 268648102
Sector: Technology SEDOL: 2295172
Industry: Computer Hardware S&P GIC: 45202020
Computer Storage & Peripherals
Company Status: Active

EMC CORPORATION
Items: 1-39 of 39

Announced	Date Effective/Unconditional	Target Name	Acquiror Name	Status	Rank Value of Deal (\$mil)	Target Advisor Role and Credit	Acquiror Advisor Role and Credit
06/29/2006		RSA Security Inc	EMC Corp	Pending	2,128.7	\$ 2,128.711 - JP Morgan - Adv	\$ 2,128.711 - Merrill Lynch & Co Inc - Adv
06/19/2006	06/19/2006	ProActivity Inc	EMC Corp	Completed	0.0	\$ 0.000 - Boston Corporate Finance Group - Adv	

click to open a tearsheet with more info

Peer Information

The **Peers** option enables you to compare a company's earnings to its peers. The **default peer set** is based on SIC code & LTM sales.

Peer set by SIC Code | Click to select

Default peer group is SIC code, but you may want to create a custom list!

MySet

- Peers By ICB Subsector
- Peers By ICB Industry
- Peers By GICS Sector
- Peers By GICS Industry Group
- Peers By GICS Sub Industry
- Peers By SIC Code
- Custom Peer Set
- Existing Set

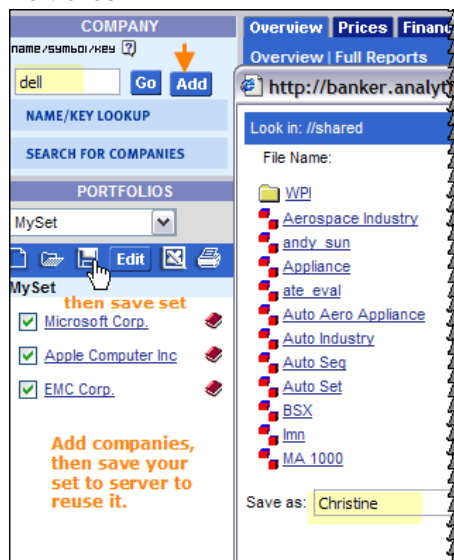
Company	Peer Aggregate	Peer Mean	Peer Median
Current Sale USD	31,419.25	5,236.54	4,329.09
Current EBITDA USD	4,383.26	876.65	505.72
Current EBIT USD	3,153.39	525.57	281.58
Current Net Income USD	2,333.09	388.85	193.59
Current Market Cap USD	44,935.47	7,489.25	3,451.95
Current Total Assets USD	30,889.25	5,148.21	2,786.53
Current Total Liabilities USD	11,002.62	1,833.77	1,130.97
Current Common Equity USD	19,121.06	3,186.84	1,524.75
Net Cash & Equiv CF Stmt USD	1,323.37	220.56	118.75
Free Cash Flow Per Share USD	2.64	0.44	0.51

Company	Citizen Watch Company Limited	Mitsumi Electric Company Limited	Seagate Technology	Western Digital Corp.	Wistron
QuoteSymbol	7762-TO	6767-TO	STX-N	WDC-N	3231-TW
Current Sale USD	3,333.50	2,229.76	7,533.86	3,638.80	5,019.38

To compare EMC to its peers, one method is to click on **Peer Sets** and choose **by SIC code** (the default), **Dow Jones Market Sector** or **Dow Jones Industry Group**.

If you prefer, you can **define your own peer set**. "Select peer sets" and choose "Custom Peer Set." You can compare the company by Industry, Location or Financials. If you're ever not sure of an SIC code or other variable, **look it up by clicking on the magnifying glass**. To compare Cisco to the companies to an existing set, choose **Existing Set** and choose a set from the list.

Portfolios



To evaluate, analyze and edit pre-built company sets, click on the Portfolios tab or refer to Portfolios in the lookup window at left. With portfolios you can create reports on topics such as **performance, financials, prices and earnings**.

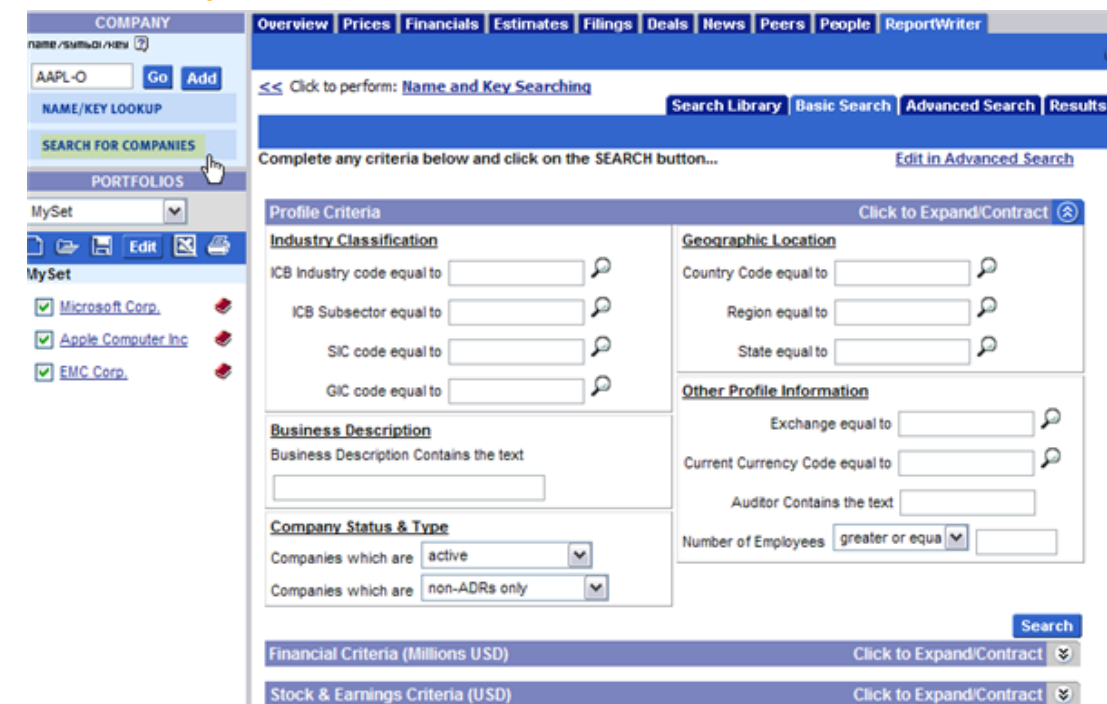
Choose a set from the drop-down menu or, to create one, click on the **New Set** icon. For new sets, you'll need to look up the companies you're interested in and add them (ticker symbols work best for this). **Click on Save**. Then, give your set a name under **Save As**. The portfolio you just created will pop up in the selection box under Portfolios. **Click on the Go button beside the set's name to open the set.**

If you wish to edit the set while it's open, click on Edit. Now you can add and delete companies from your set.

Searching

Clicking on Search For Companies and then Advanced Search from the drop-down menu under Companies will put you into Basic Search. Here you can look for companies within a certain geographic area or with a certain number of employees.

Search for Companies Criteria



In Advanced Search, choose a base set then select items under "Step 2". You can choose categories and specific preset

searches. Clicking Select will let you clarify your search. For example, if you wanted to **search for companies with sales over 10 billion**, you can choose Sales from the left menu and Select. Then, add after $\geq 10,000$ (units are in Millions USD) and click Add. It'll show up under Step 3. You can then search for State, and add Massachusetts to screen for companies here in MA. Hit search and a list of companies fitting that criteria will appear. Then you can create reports.

<< Click to perform: [Name and Key Searching](#)

[Search Library](#) [Basic Search](#) [Advanced Search](#) [Results](#)

[Save Query](#) | [Edit in Advanced Search](#) Currency: USD

Search Criteria	Passed	Result Set	Save
1 Companies	82316	Make Active Set	Save Set
2 tf.Sales[CPA]>=10000	1130	Make Active Set	Save Set
3 Contains(tf.AddressStateProvince, "MASSACHUSETTS")	6	Make Active Set	Save Set

Powerful ability to screen for companies by many criteria

[Search Data](#) [List](#) [Profiles](#) [Financials](#) [Market Data](#) [Report Writer](#)

Result Set From Rule#: 3

[Export to Excel](#) | [Print Report](#) | View With Sources

Result Data

Entity Name	tf.Sales[CPA]	tf.Address State Province
1 DIGITAL EQUIPMENT CORPORATION	13,046.83	MASSACHUSETTS
2 FLEETBOSTON FINANCIAL CORPORATION	14,445.00	MASSACHUSETTS
3 Gillette Company	10,477.00	MASSACHUSETTS
4 Raytheon Company	21,894.00	MASSACHUSETTS
5 Staples Inc	16,078.85	MASSACHUSETTS
6 TJX Companies Inc	16,057.94	MASSACHUSETTS

Thomson One Analytics for Microsoft Excel

You can do everything we did here from within Excel, too, by using the Thomson One Banker (T1B) For Office. It can be downloaded by clicking on the **Tools** button at the top right of the page.



Once you have downloaded it, you will be able to use the Thomson One toolbar to pull data into Excel and manipulate it using PFDL or proprietary financial language syntax. You'll have to access it using the **username/password which you can obtain by contacting a reference librarian (research-lib@wpi.edu)**. Consider from the same TOOLS area, downloading pre-built reports, great time savers.

Thomson ONE Banker Excel Pre- Built Reports

View Reports, Report Library to get to these. Simply change TICKER to refresh info for another company.

Scaling Factor - Millions USD		12/31/01	12/31/00	12/31/99
ASSETS				
Cash & Equivalents		18,555.00	10,284.00	10,442.00
Total Receivables		121,604.00	110,788.00	94,788.00
Inventories		20,221.00	16,704.00	16,316.00
Prepaid Expenses	#CF		#CF	#CF
Other Current Assets Excl Prpd Exp		7,877.00	8,388.00	9,006.00
Total Current Assets		168,257.00	146,164.00	130,552.00
Gross Plant, Property & Equip		115,953.00	120,815.00	119,418.00

If you have further questions call (508) 831-6700 or e-mail research-lib@wpi.edu. For more detailed assistance, please contact Thomson support at 1-800 843-7747.