

# 2006 STUDENT FACT BOOK



October 1, 2006

Prepared by the Office of Enrollment Management  
[For WPI use only]

# TABLE OF CONTENTS

Fall 2006	1
Admissions	11
Undergraduate Enrollment	16
Graduate Enrollment	22
Retention and Graduation	28

**FALL 2006**

**CURRENT ENROLLMENT PROFILE – FALL 2006**

	FULL-TIME	PART-TIME	NON-DEGREE	TOTAL
UNDERGRADS	2816	36	9	2861
GRADS	497	398	147	1042
TOTAL	3313	434	156	3903

	FULL-TIME FEMALE		FULL-TIME MALE	
UNDERGRADS	724	26%	2092	74%
GRADS	134	27%	363	73%

	UNDERGRADS		GRADS	
	NUMBER	PERCENTAGE	NUMBER	PERCENTAGE
Asian/Pacific Islander	166	6%	46	5%
Black	68	2%	12	1%
Hispanic	104	4%	16	2%
Native American	11	0%	1	0%
White	2224	79%	547	61%
Non-Resident Alien	192	7%	235	26%
Multiracial	34	1%	16	2%
Unreported	17	1%	22	2%

### DOMESTIC UNDERGRADUATES BY STATE

ALABAMA	0
ALASKA	1
ARIZONA	2
ARKANSAS	0
CALIFORNIA	42
COLORADO	9
CONNECTICUT	299
DELAWARE	0
DISTRICT OF COLUMBIA	2
FLORIDA	13
GEORGIA	4
GUAM	1
HAWAII	3
IDAHO	0
ILLINOIS	8
INDIANA	3
IOWA	2
KANSAS	4
KENTUCKY	1
LOUISIANA	4
MAINE	144
MARYLAND	26
MASSACHUSETTS	1301
MICHIGAN	4
MINNESOTA	2
MISSISSIPPI	1
MISSOURI	4

MONTANA	1
NEBRASKA	0
NEVADA	3
NEW HAMPSHIRE	239
NEW JERSEY	52
NEW MEXICO	3
NEW YORK	157
NORTH CAROLINA	8
NORTH DAKOTA	0
OHIO	10
OKLAHOMA	3
OREGON	10
PENNSYLVANIA	44
PUERTO RICO	3
RHODE ISLAND	90
SOUTH CAROLINA	0
SOUTH DAKOTA	0
TENNESSEE	7
TEXAS	12
UTAH	0
VERMONT	31
VIRGINIA	17
WASHINGTON	11
WEST VIRGINIA	0
WISCONSIN	6
WYOMING	1
APO	4

## INTERNATIONAL UNDERGRADUATES BY COUNTRY OF CITIZENSHIP

ALBANIA	3
AUSTRALIA	1
BANGLADESH	4
BRAZIL	5
BULGARIA	14
CAMEROON	2
CANADA	1
CHILE	1
CHINA	20
COLOMBIA	3
CONGO, DEM. REPUBLIC OF THE	1
COSTA RICA	2
CYPRUS	3
DENMARK	1
GERMANY	2
GUATEMALA	1
HONG KONG	2
INDIA	28
INDONESIA	1
JAMAICA	5
JAPAN	4
KAZAKHSTAN	2
KENYA	1

KOREA, REPUBLIC OF	2
LIBERIA	1
MACEDONIA	1
MALAYSIA	3
MEXICO	2
MOROCCO	2
MYANMAR	1
NEPAL	7
NIGERIA	1
PAKISTAN	4
PANAMA	2
POLAND	1
ROMANIA	7
RUSSIA	1
RUSSIAN FEDERATION	5
SERBIA-MONTENEGRO	1
SINGAPORE	1
SPAIN	1
SRI LANKA	1
TAIWAN (R.O.C.)	4
TURKEY	17
VENEZUELA	1
VIETNAM	5

## FALL 2006 ENROLLMENT BY MAJOR AND CLASS

CLASS OF:	2010	2009	2008	2007	2006	2005	TR	CO-OP	UNDERGRAD TOTALS	F/T GRAD	P/T GRAD	GRADUATE TOTALS
<b>ENGINEERING</b>												
AEROSPACE	28	27	17	15	0	0	3	1	91	-	-	-
BIOMEDICAL	36	49	49	39	4	0	6	1	184	33	3	36
CIVIL	29	50	68	60	3	0	6	0	216	26	16	42
CHEMICAL	31	44	34	31	1	0	3	0	144	21	0	21
ELECTRICAL & COMPUTER	40	89	76	99	5	1	7	1	318	76	46	122
FIRE PROTECTION	-	-	-	-	-	-	-	-	-	52	26	78
INDUSTRIAL	7	8	11	12	2	0	0	1	41	-	-	-
MECHANICAL	79	146	162	122	14	3	6	2	534	72	26	98
MANUFACTURING	1	3	5	6	2	0	0	0	17	11	6	17
MATERIALS	-	-	-	-	-	-	-	-	-	15	5	20
MATERIALS PROCESSING	-	-	-	-	-	-	-	-	-	3	0	3
UNDECLARED	200	7	4	0	0	0	2	0	213	0	0	0
<b>SCIENCES</b>												
BIOLOGY & BIOTECHNOLOGY	42	53	56	47	1	0	2	0	201	18	1	19
BIOCHEMISTRY	20	20	22	15	0	0	0	0	77	3	0	3
CHEMISTRY	7	18	9	6	0	0	0	0	40	13	0	13
COMPUTER SCIENCE	74	64	57	54	8	2	4	1	264	78	55	133
MATH	24	19	24	20	0	0	1	0	88	27	24	51
PHYSICS	15	22	28	9	0	0	3	0	77	16	2	18
UNDECLARED	18	0	0	0	0	0	0	0	18	0	0	0
<b>OTHER</b>												
ECON/SOC SCI TECH	6	5	4	6	0	0	1	0	22	1	9	10
HUMANITIES & ARTS	4	2	1	3	0	0	0	0	10	-	-	-
INTERACTIVE MEDIA & GAME	39	24	15	2	0	0	4	0	84	-	-	-
INTERDISCIPLINARY	1	2	3	2	1	0	1	0	10	8	77	85
MANAGEMENT	11	17	27	34	3	3	0	1	96	24	102	126
UNDECLARED	65	4	2	0	0	0	0	0	71	0	0	0
<b>TOTAL</b>	<b>777</b>	<b>673</b>	<b>674</b>	<b>582</b>	<b>44</b>	<b>9</b>	<b>49</b>	<b>8</b>	<b>2816</b>	<b>497</b>	<b>398</b>	<b>895</b>

NOTE: Undergraduate data include full-time undergraduates and students on Co-op.

Graduate data include full-time and part-time students admitted into a degree or certificate program.

## GENDER & ETHNICITY BY FIRST MAJOR FULL-TIME UNDERGRADUATE STUDENTS

	WHITE	%	BLACK	%	HISP	%	ASIAN	%	NATIVE AMER.	%	NON-RES ALIEN	%	UNK	%	MULTI	%	FEMALE	%	MALE	%	DEPT TOTALS
<b>ENGINEERING</b>																					
AEROSPACE	75	82%	4	4%	3	3%	2	2%	2	2%	5	5%	0	0%	0	0%	18	20%	73	80%	91
BIOMEDICAL	143	78%	6	3%	4	2%	18	10%	1	1%	11	6%	1	1%	0	0%	84	46%	100	54%	184
CIVIL	186	86%	1	0%	8	4%	10	5%	1	0%	5	2%	2	1%	3	1%	72	33%	144	67%	216
CHEMICAL	110	76%	6	4%	4	3%	10	7%	1	1%	8	6%	0	0%	5	3%	55	38%	89	62%	144
ELECTRICAL & COMPUTER	230	72%	9	3%	11	3%	23	7%	1	0%	36	11%	4	1%	4	1%	28	9%	290	91%	318
INDUSTRIAL	27	66%	2	5%	1	2%	2	5%	0	0%	8	20%	1	2%	0	0%	21	51%	20	49%	41
MECHANICAL	445	83%	11	2%	23	4%	29	5%	0	0%	19	4%	3	1%	4	1%	70	13%	464	87%	534
MANUFACTURING	15	88%	0	0%	1	6%	0	0%	0	0%	1	6%	0	0%	0	0%	2	12%	15	88%	17
UNDECLARED (ED)	164	77%	6	3%	6	3%	10	5%	1	0%	24	11%	2	1%	0	0%	39	18%	174	82%	213
<b>SCIENCES</b>																					
BIOLOGY & BIOTECHNOLOGY	158	79%	5	2%	12	6%	13	6%	0	0%	11	5%	0	0%	2	1%	138	69%	63	31%	201
BIOCHEMISTRY	63	82%	1	1%	1	1%	5	6%	0	0%	5	6%	0	0%	2	3%	42	55%	35	45%	77
CHEMISTRY	34	85%	0	0%	0	0%	3	8%	1	3%	2	5%	0	0%	0	0%	16	40%	24	60%	40
COMPUTER SCIENCE	211	80%	5	2%	5	2%	14	5%	1	0%	22	8%	1	0%	5	2%	23	9%	241	91%	264
MATH	67	76%	2	2%	3	3%	6	7%	1	1%	8	9%	0	0%	1	1%	29	33%	59	67%	88
PHYSICS	65	85%	2	3%	1	1%	3	4%	0	0%	4	5%	0	0%	2	3%	16	21%	61	79%	77
UNDECLARED (SC)	13	72%	0	0%	1	6%	1	6%	0	0%	3	17%	0	0%	0	0%	6	33%	12	67%	18
<b>OTHER</b>																					
ECON/SOC SCI TECH	11	50%	1	5%	2	9%	1	5%	0	0%	4	18%	0	0%	3	14%	11	50%	11	50%	22
HUMANITIES & ARTS	6	60%	0	0%	1	10%	1	10%	0	0%	2	20%	0	0%	0	0%	3	30%	7	70%	10
INTERACTIVE MEDIA & GAME	69	82%	3	4%	3	4%	3	4%	1	1%	2	2%	1	1%	2	2%	9	11%	75	89%	84
INTERDISCIPLINARY	7	70%	0	0%	0	0%	3	30%	0	0%	0	0%	0	0%	0	0%	4	40%	6	60%	10
MANAGEMENT	73	76%	2	2%	8	8%	5	5%	0	0%	6	6%	1	1%	1	1%	19	20%	77	80%	96
UNDECLARED	52	73%	2	3%	6	8%	4	6%	0	0%	6	8%	1	1%	0	0%	19	27%	52	73%	71
<b>TOTAL</b>	<b>2225</b>	<b>79%</b>	<b>68</b>	<b>2%</b>	<b>104</b>	<b>4%</b>	<b>166</b>	<b>6%</b>	<b>11</b>	<b>0%</b>	<b>192</b>	<b>7%</b>	<b>17</b>	<b>1%</b>	<b>34</b>	<b>1%</b>	<b>724</b>	<b>26%</b>	<b>2092</b>	<b>74%</b>	<b>2816</b>

**GENDER & ETHNICITY BY MAJOR  
FULL-TIME AND PART-TIME GRADUATE STUDENTS**

	WHITE	%	BLACK	%	HISP	%	ASIAN	%	NATIVE AMER.	%	NON-RES ALIEN	%	UNK	%	MULTI	%	FEMALE	%	MALE	%	DEPT TOTALS
<b>ENGINEERING</b>																					
BIOMEDICAL	20	56%	0	0%	2	6%	3	8%	0	0%	11	31%	0	0%	0	0%	19	53%	17	47%	36
CIVIL	25	60%	2	5%	3	7%	3	7%	0	0%	7	17%	1	2%	1	2%	10	24%	32	76%	42
CHEMICAL	4	19%	0	0%	0	0%	3	14%	0	0%	14	67%	0	0%	0	0%	6	29%	15	71%	21
ELECTRICAL & COMPUTER	61	50%	0	0%	3	2%	8	7%	0	0%	43	35%	4	3%	3	2%	10	8%	112	92%	122
FIRE PROTECTION	58	74%	0	0%	1	1%	4	5%	1	1%	10	13%	1	1%	3	4%	12	15%	66	85%	78
MECHANICAL	63	64%	2	2%	3	3%	2	2%	0	0%	24	24%	2	2%	2	2%	19	19%	79	81%	98
MANUFACTURING	8	47%	0	0%	0	0%	1	6%	0	0%	8	47%	0	0%	0	0%	1	6%	16	94%	17
MATERIALS SCIENCE	13	65%	0	0%	0	0%	1	5%	0	0%	5	25%	1	5%	0	0%	9	45%	11	55%	20
MATERIALS PROCESSING	0	0%	0	0%	0	0%	0	0%	0	0%	3	100%	0	0%	0	0%	0	0%	3	100%	3
<b>SCIENCES</b>																					
BIOLOGY & BIOTECHNOLOGY	12	63%	0	0%	0	0%	0	0%	0	0%	7	37%	0	0%	0	0%	12	63%	7	37%	19
BIOCHEMISTRY	0	0%	0	0%	0	0%	0	0%	0	0%	2	67%	1	33%	0	0%	2	67%	1	33%	3
CHEMISTRY	6	46%	0	0%	0	0%	1	8%	0	0%	5	38%	0	0%	1	8%	7	54%	6	46%	13
COMPUTER SCIENCE	68	51%	1	1%	0	0%	10	8%	0	0%	50	38%	1	1%	3	2%	20	15%	113	85%	133
MATH	30	59%	2	4%	0	0%	2	4%	0	0%	14	27%	2	4%	1	2%	26	51%	25	49%	51
PHYSICS	7	39%	1	6%	0	0%	1	6%	0	0%	8	44%	1	6%	0	0%	5	28%	13	72%	18
<b>OTHER</b>																					
INTERDISCIPLINARY	68	80%	3	4%	2	2%	3	4%	0	0%	3	4%	4	5%	2	2%	21	25%	64	75%	85
MANAGEMENT	96	76%	1	1%	2	2%	4	3%	0	0%	19	15%	4	3%	0	0%	28	22%	98	78%	126
SYSTEM DYNAMICS	8	80%	0	0%	0	0%	0	0%	0	0%	2	20%	0	0%	0	0%	2	20%	8	80%	10
<b>TOTAL</b>	<b>547</b>	<b>61%</b>	<b>12</b>	<b>1%</b>	<b>16</b>	<b>2%</b>	<b>46</b>	<b>5%</b>	<b>1</b>	<b>0%</b>	<b>235</b>	<b>26%</b>	<b>22</b>	<b>2%</b>	<b>16</b>	<b>2%</b>	<b>209</b>	<b>23%</b>	<b>686</b>	<b>77%</b>	<b>895</b>

NOTE: Includes all graduate students accepted into a degree or certificate program.

## ENROLLMENT OF UNDERGRADUATE MINORITIES AND WOMEN

	FALL 97	FALL 98	FALL 99	FALL 00	FALL 01	FALL 02	FALL 03	FALL 04	FALL 05	FALL 06
UNDERREPRESENTED MINORITIES*	126	125	124	111	114	120	138	157	163	217
PERCENTAGE OF TOTAL	4.8%	4.7%	4.6%	4.1%	4.2%	4.4%	5.1%	5.7%	5.8%	7.7%
WOMEN	578	584	609	626	610	633	644	674	693	724
PERCENTAGE OF TOTAL	21.9%	21.9%	22.8%	23.2%	22.5%	23.4%	23.8%	24.4%	24.7%	25.7%

\*Includes Black, Hispanic, Native American & multiracial

NOTE: Underrepresented minority data prior to 2006 do not include students classified as multiracial.

## MAJORS OF INCOMING FRESHMEN

	FALL 04	FALL 05	FALL 06
<b>ENGINEERING</b>			
AEROSPACE	20	31	28
BIOMEDICAL	53	21	36
CIVIL	60	31	29
CHEMICAL	30	22	31
ELECTRICAL & COMPUTER	80	69	40
INDUSTRIAL	5	4	7
MECHANICAL	134	97	79
MANUFACTURING	2	1	1
UNDECLARED (ED)	56	114	200
<b>SCIENCES</b>			
BIOLOGY & BIOTECHNOLOGY	64	59	42
BIOCHEMISTRY	20	14	20
CHEMISTRY	25	13	7
COMPUTER SCIENCE	95	84	74
MATH	33	18	24
PHYSICS	23	24	15
UNDECLARED (SC)	3	7	18
<b>OTHER</b>			
ECON/SOC SCI TECH	3	4	6
HUMANITIES & ARTS	1	0	4
INTERACTIVE MEDIA & GAME	N/A	17	39
INTERDISCIPLINARY	1	1	1
MANAGEMENT	10	10	11
UNDECLARED	28	98	65
<b>TOTAL</b>	<b>746</b>	<b>739</b>	<b>777</b>

## SECOND MAJORS OF UNDERGRADUATES

HUMANITIES & ARTS	24
MATH	22
PHYSICS	18
ELECTRICAL & COMPUTER ENG	17
IMGD	14
COMPUTER SCIENCE	12
MANAGEMENT	10
MECHANICAL ENGINEERING	8
TECH, SCI & PROF COMMUNICATION	7
CIVIL ENGINEERING	4
INTERNATIONAL STUDIES	4
SOCIAL SCIENCE & POLICY STUDIES	4
BIOCHEMISTRY	3
BIOMEDICAL ENGINEERING	3
CHEMISTRY	3
AEROSPACE ENGINEERING	2
BIOLOGY & BIOTECHNOLOGY	2
CHEMICAL ENGINEERING	1
MANUFACTURING ENGINEERING	1

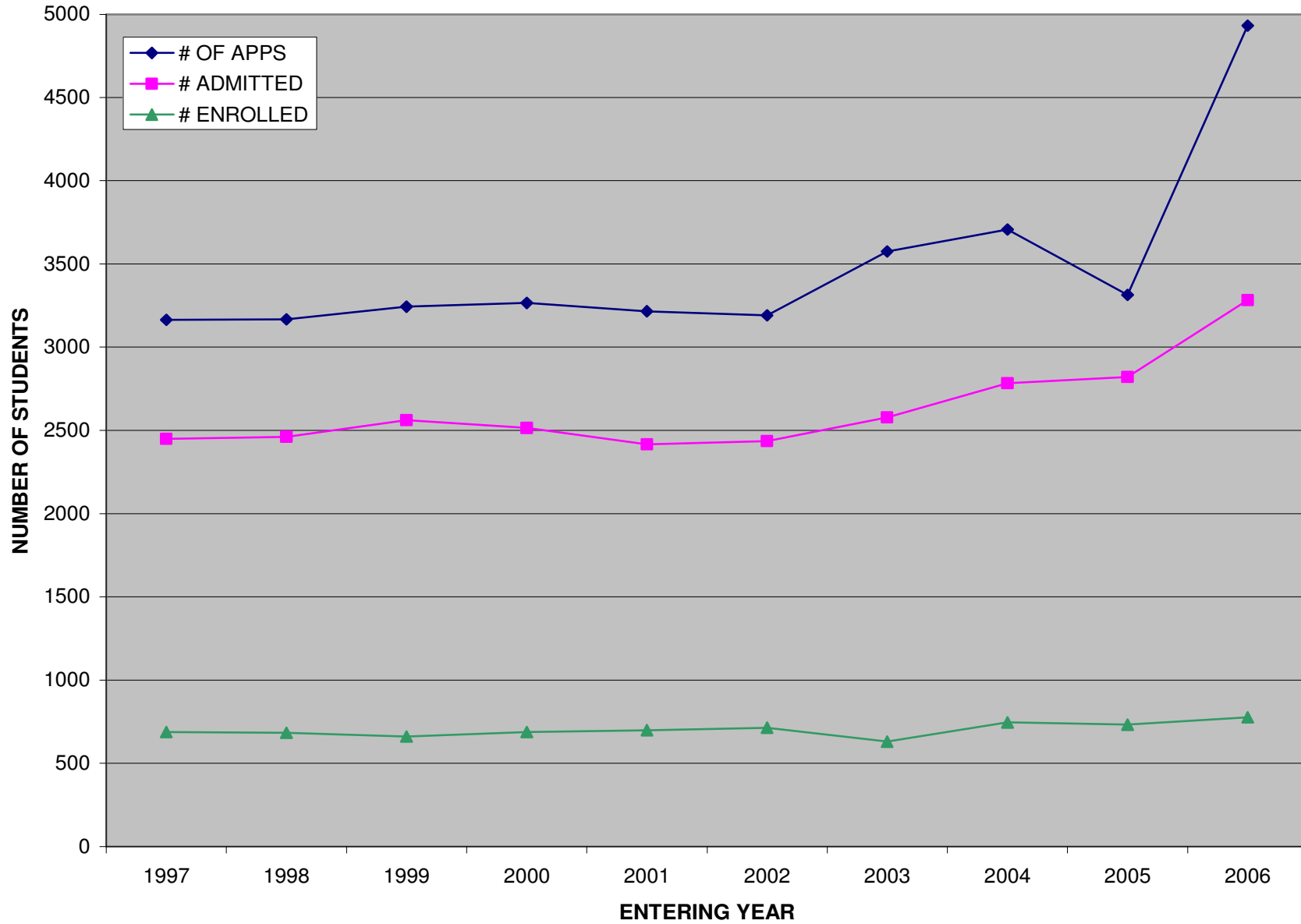
# ADMISSIONS

## UNDERGRADUATE ADMISSIONS DATA

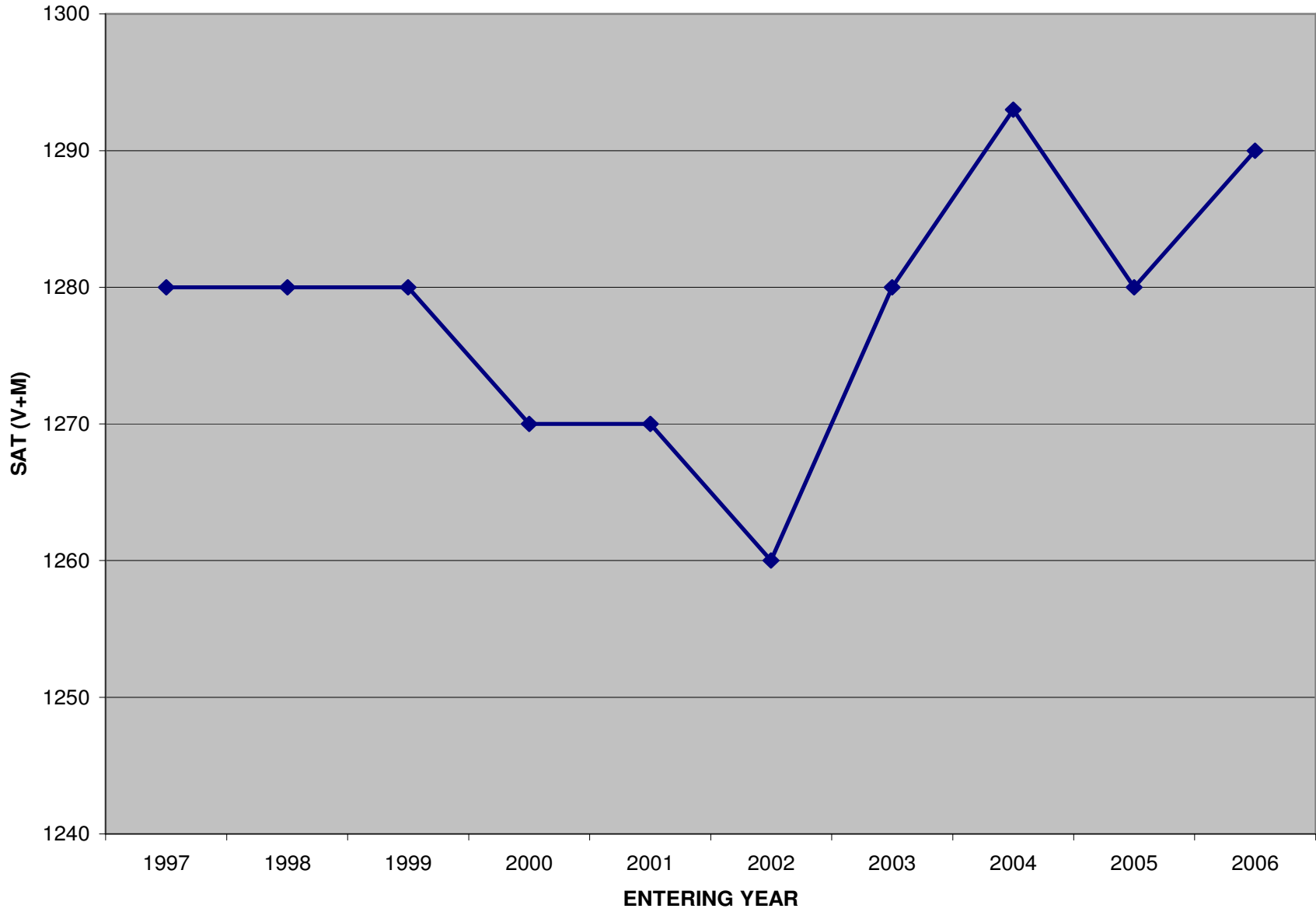
YEAR	# OF APPS	# ADMITTED	% ADMITTED	# ENROLLED	% YIELD	MEDIAN SAT (V+M)	MEDIAN SAT (CR+M+W)	MEDIAN CLASS RANK	PERCENTILE RANK
1997	3165	2450	77%	688	28%	1280	-	11%	89%
1998	3167	2462	78%	684	28%	1280	-	11%	89%
1999	3244	2562	79%	662	26%	1280	-	12%	88%
2000	3266	2515	77%	689	27%	1270	-	12%	88%
2001	3216	2417	75%	700	29%	1270	-	12%	88%
2002	3191	2436	76%	714	29%	1260	-	11%	89%
2003	3575	2579	72%	631	24%	1280	-	10%	90%
2004	3708	2783	75%	746	27%	1293	-	13%	87%
2005	3315	2822	85%	733	26%	1280	-	14%	86%
2006	4931	3283	67%	776	24%	1290	1880	10%	90%

NOTE: In 2006, the SAT subsections changed from Verbal and Math to Critical Reasoning, Math and Writing. To continue the comparison from prior years, the Critical Reasoning + Math subtotal is shown in addition to the new composite score.

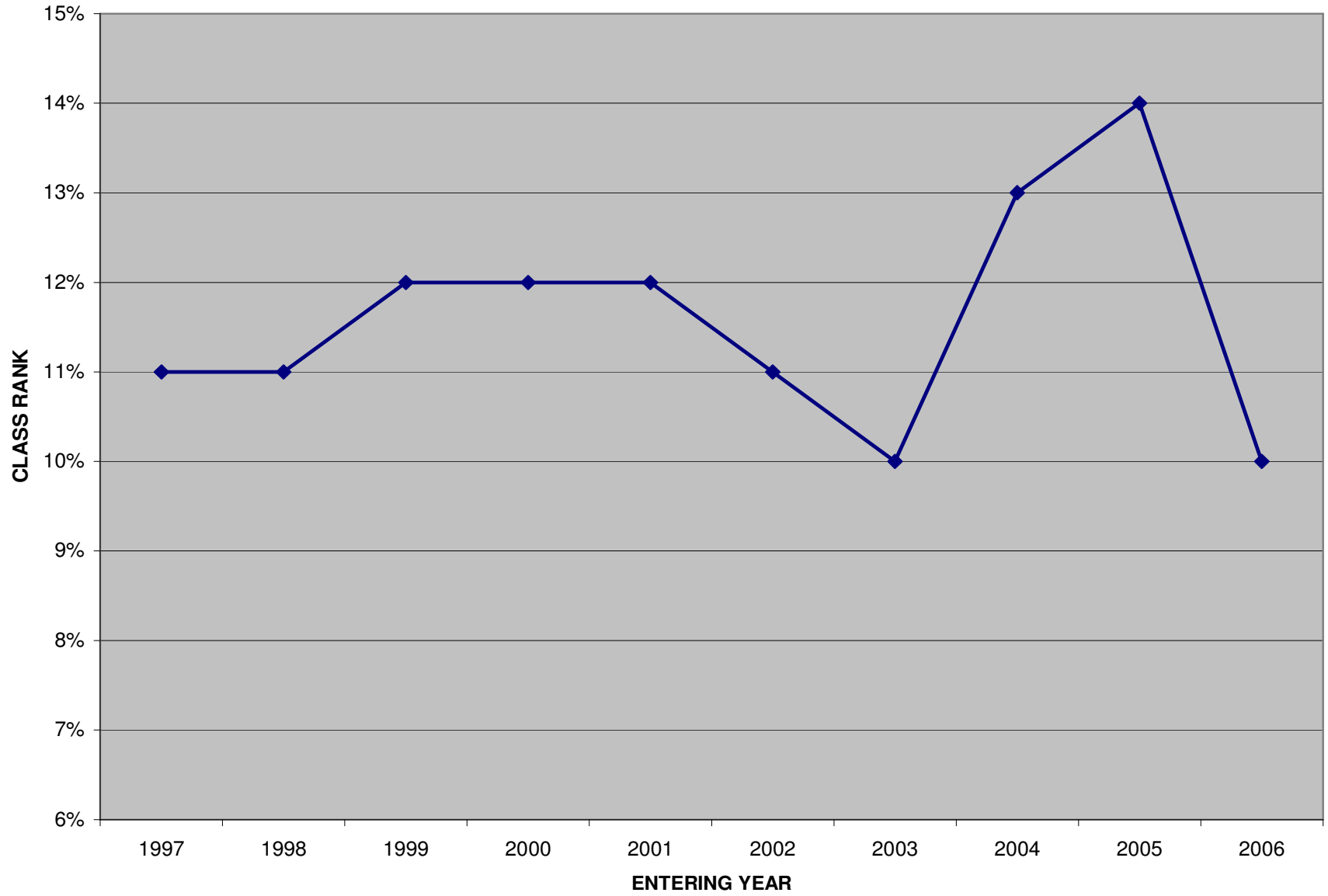
### UNDERGRADUATE ADMISSIONS DATA



### MEDIAN SAT SCORES



### MEDIAN CLASS RANK

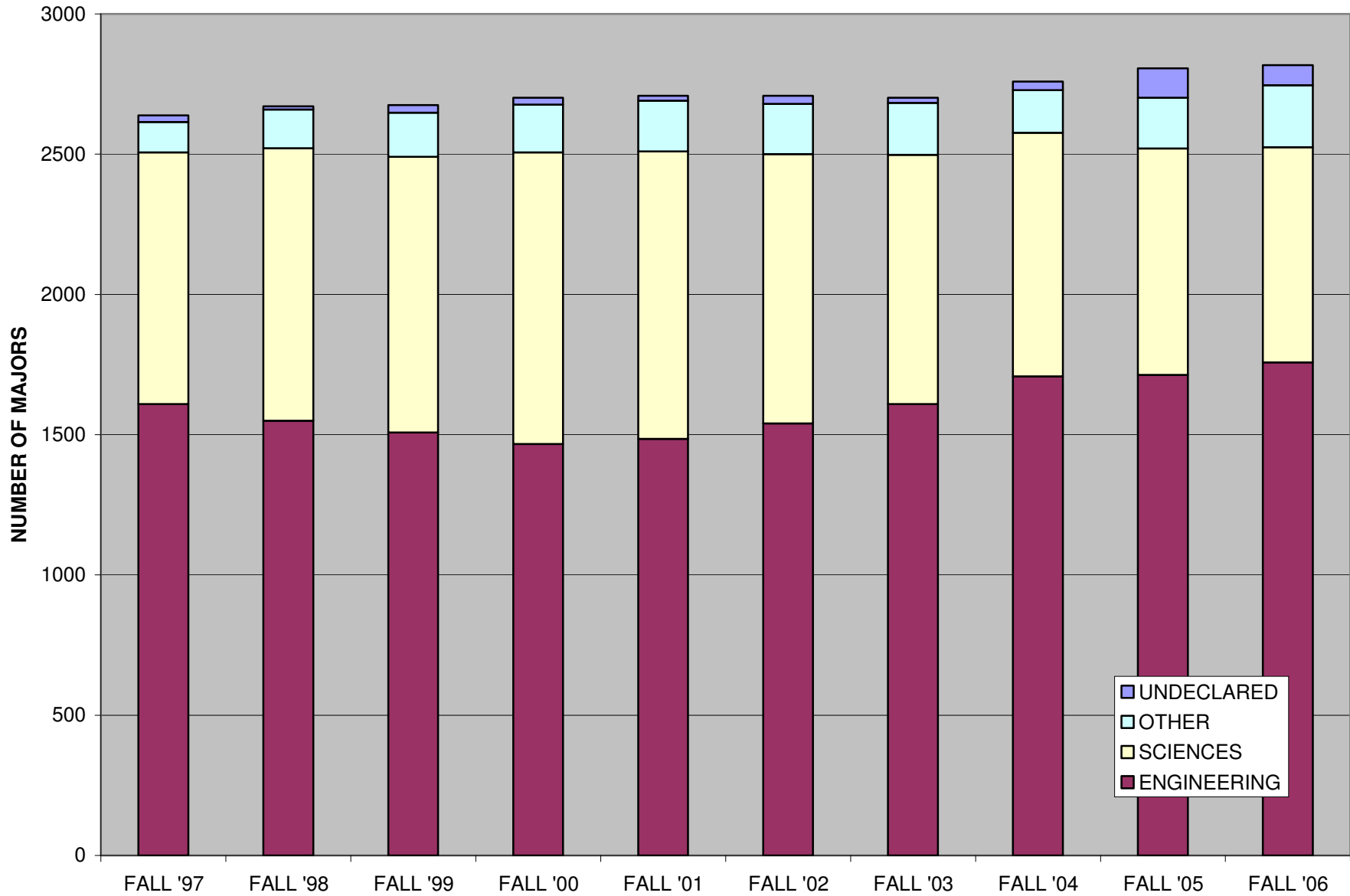


# UNDERGRADUATE ENROLLMENT

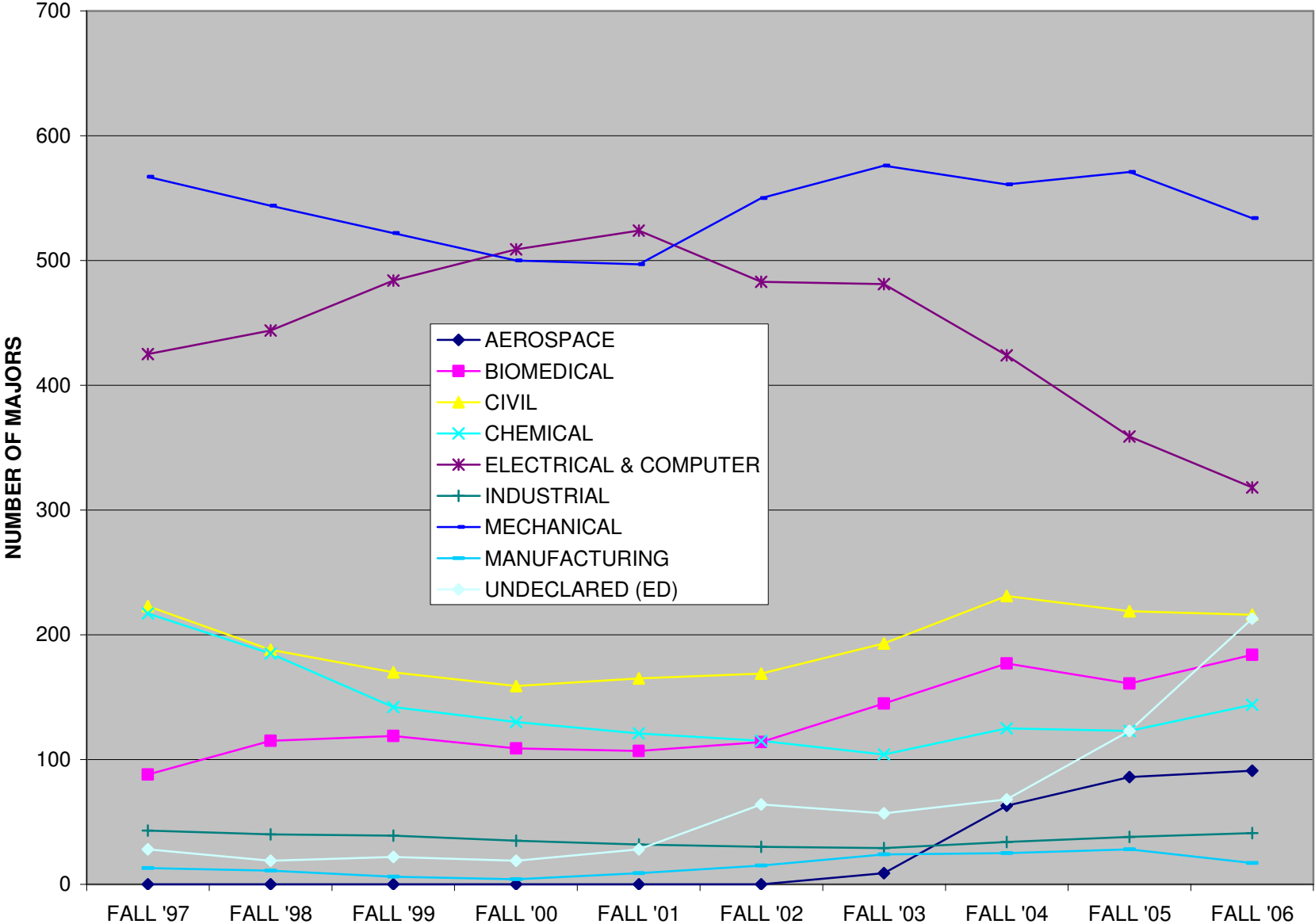
## FULL-TIME UNDERGRADUATE ENROLLMENT FROM 1997 TO 2006

	FALL '97	FALL '98	FALL '99	FALL '00	FALL '01	FALL '02	FALL '03	FALL '04	FALL '05	FALL '06
<b>ENGINEERING</b>										
AEROSPACE	0	0	0	0	0	0	9	63	86	91
BIOMEDICAL	88	115	119	109	107	114	145	177	161	184
CIVIL	223	188	170	159	165	169	193	231	219	216
CHEMICAL	217	185	142	130	121	115	104	125	123	144
ELECTRICAL & COMPUTER	425	444	484	509	524	483	481	424	359	318
INDUSTRIAL	43	40	39	35	32	30	29	34	38	41
MECHANICAL	567	544	522	500	497	550	576	561	571	534
MANUFACTURING	13	11	6	4	9	15	24	25	28	17
UNDECLARED (ED)	28	19	22	19	28	64	57	68	123	213
<b>SCIENCES</b>										
BIOLOGY & BIOTECHNOLOGY	300	296	294	274	236	219	212	207	215	201
BIOCHEMISTRY	68	73	55	55	52	57	63	76	62	77
CHEMISTRY	33	35	40	34	21	26	34	47	46	40
COMPUTER SCIENCE	394	466	499	573	608	530	455	385	323	264
MATH	52	47	43	50	53	68	74	86	83	88
PHYSICS	50	52	51	52	54	52	50	64	71	77
UNDECLARED (SC)	0	2	1	1	1	8	1	3	7	18
<b>OTHER</b>										
ECON/SOC SCI TECH	6	5	7	16	16	10	11	8	15	22
HUMANITIES & ARTS	9	13	10	8	13	11	13	10	13	10
INTERACTIVE MEDIA & GAME	-	-	-	-	-	-	-	-	37	84
INTERDISCIPLINARY	12	10	11	8	17	14	11	9	8	10
MANAGEMENT	87	114	133	141	137	144	150	125	113	96
UNDECLARED	23	12	27	24	17	29	18	31	105	71
<b>TOTAL</b>	<b>2638</b>	<b>2671</b>	<b>2675</b>	<b>2701</b>	<b>2708</b>	<b>2708</b>	<b>2710</b>	<b>2759</b>	<b>2806</b>	<b>2816</b>
<b>ENGINEERING</b>	1604	1546	1504	1465	1483	1540	1618	1708	1708	1758
	61%	58%	56%	54%	55%	57%	60%	62%	61%	62%
<b>SCIENCES</b>	897	971	983	1039	1025	960	889	868	807	765
	34%	36%	37%	38%	38%	35%	33%	31%	29%	27%
<b>OTHER</b>	114	142	161	173	183	179	185	152	186	222
	4%	5%	6%	6%	7%	7%	7%	6%	7%	8%
<b>UNDECLARED</b>	23	12	27	24	17	29	18	31	105	71
	1%	0%	1%	1%	1%	1%	1%	1%	4%	3%

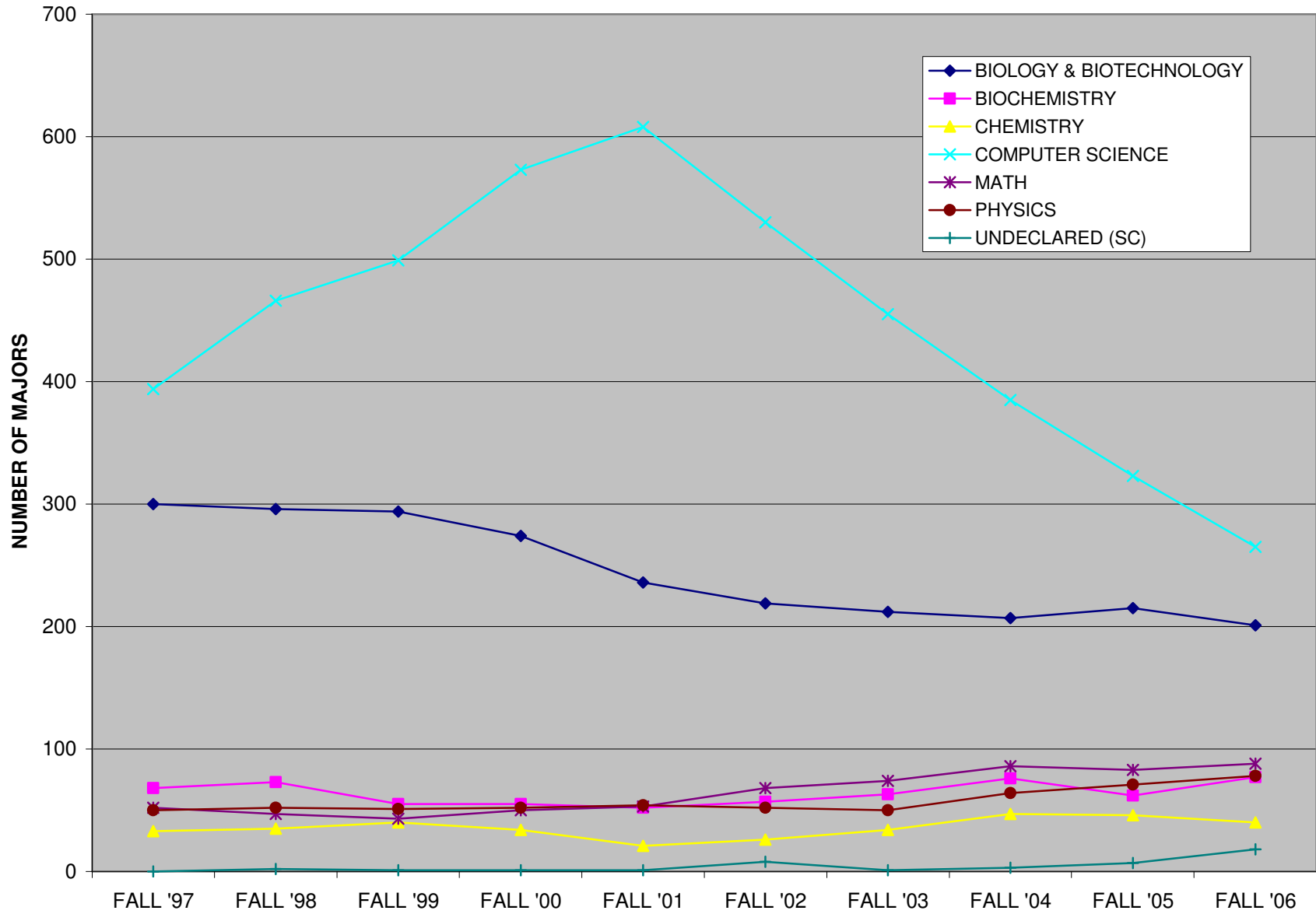
## UNDERGRADUATE ENROLLMENT BY CATEGORY



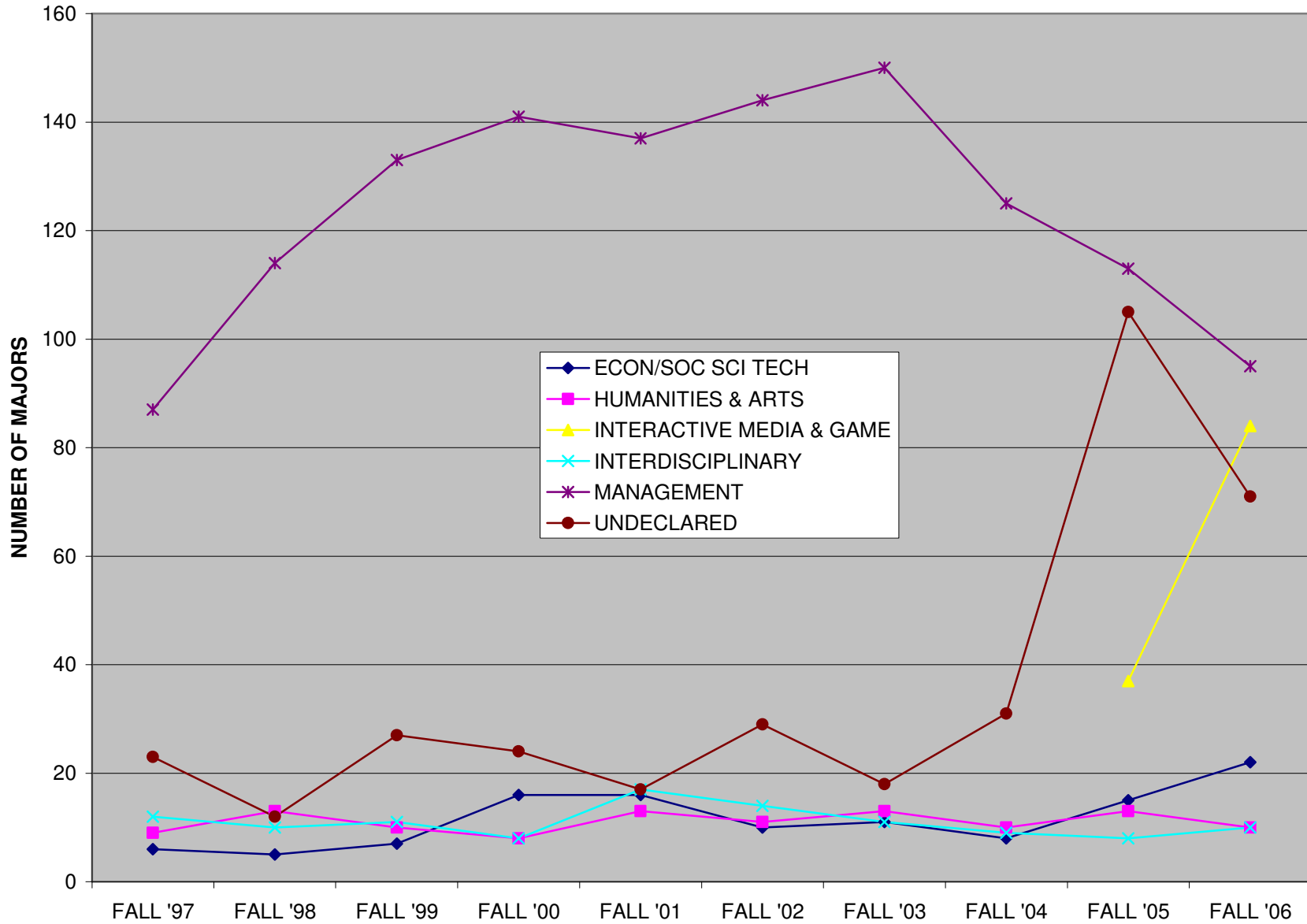
### UNDERGRADUATE ENROLLMENT – ENGINEERING



## UNDERGRADUATE ENROLLMENT – SCIENCES



### UNDERGRADUATE ENROLLMENT – OTHER



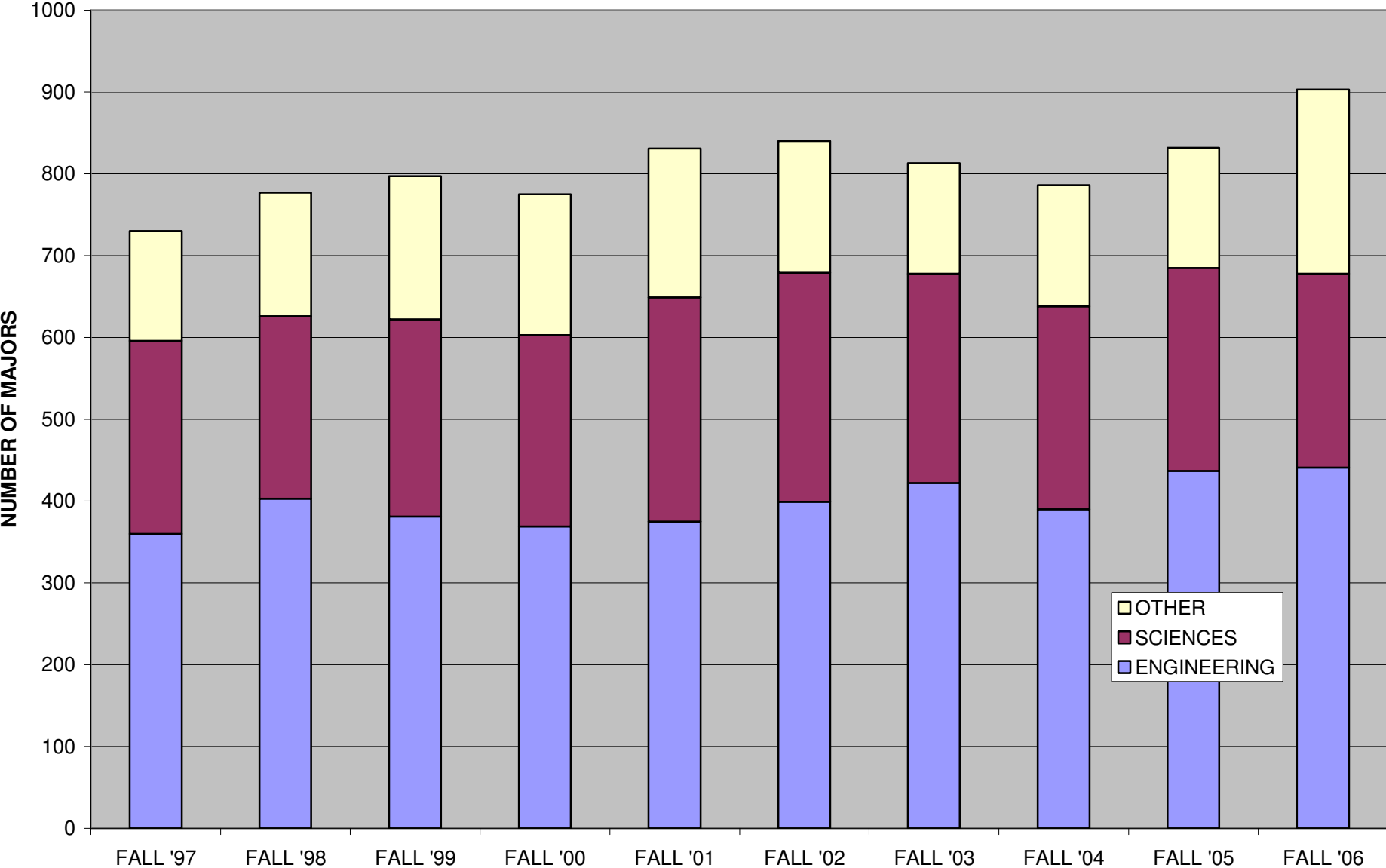
# GRADUATE ENROLLMENT

## GRADUATE ENROLLMENT BY MAJOR FROM 1997 TO 2006

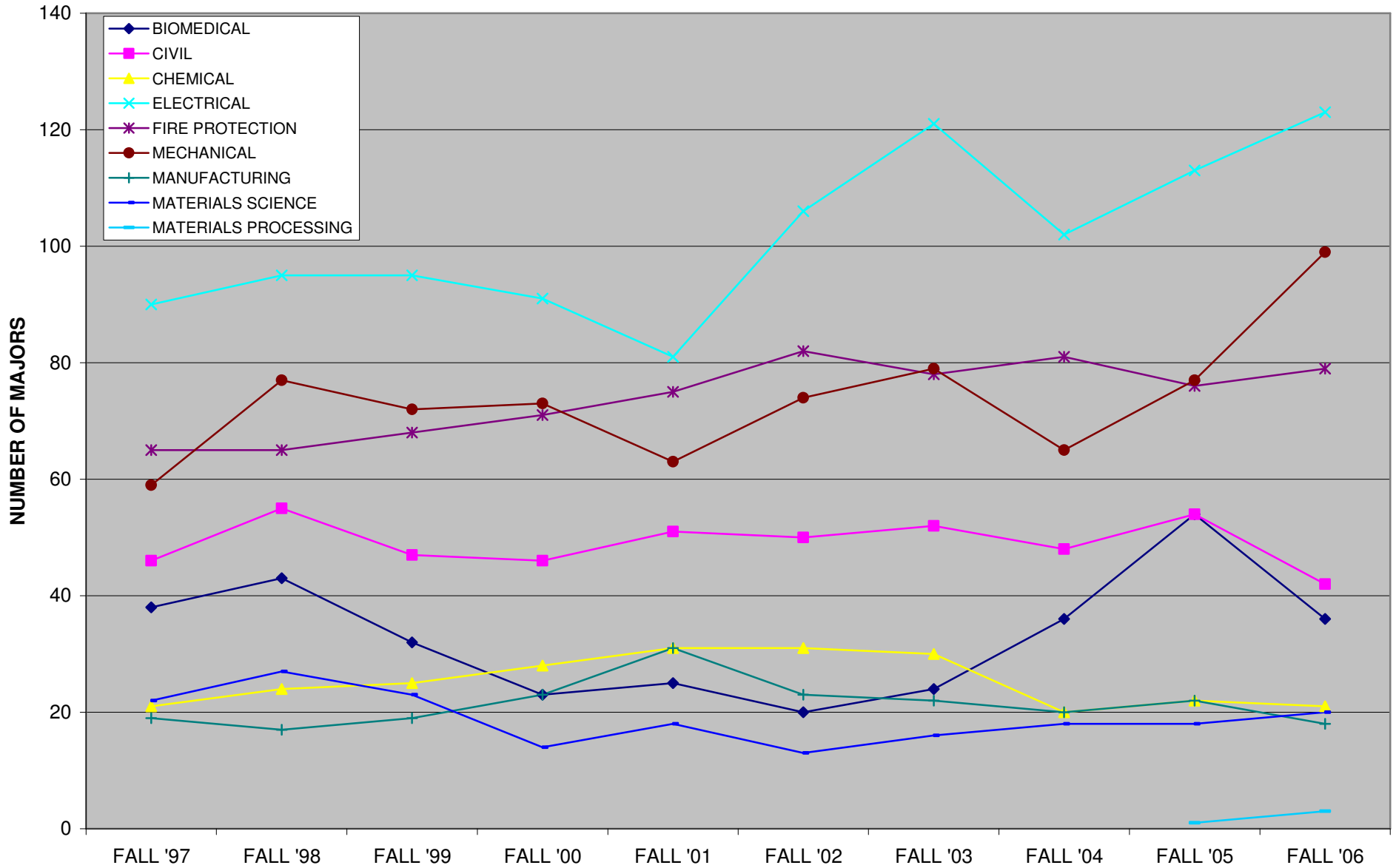
	FALL '97	FALL '98	FALL '99	FALL '00	FALL '01	FALL '02	FALL '03	FALL '04	FALL '05	FALL '06
<b>ENGINEERING</b>										
BIOMEDICAL	38	43	32	23	25	20	24	36	54	36
CIVIL	46	55	47	46	51	50	52	48	54	42
CHEMICAL	21	24	25	28	31	31	30	20	22	21
ELECTRICAL	90	95	95	91	81	106	121	102	113	122
FIRE PROTECTION	65	65	68	71	75	82	78	81	76	78
MECHANICAL	59	77	72	73	63	74	79	65	77	98
MANUFACTURING	19	17	19	23	31	23	22	20	22	17
MATERIALS SCIENCE	22	27	23	14	18	13	16	18	18	20
MATERIALS PROCESSING	0	0	0	0	0	0	0	0	1	3
<b>SCIENCES</b>										
BIOLOGY & BIOTECHNOLOGY	45	27	29	25	32	26	13	17	19	19
BIOCHEMISTRY	N/A	N/A	N/A	N/A	N/A	N/A	N/A	N/A	N/A	3
CHEMISTRY	24	22	22	18	20	21	18	18	18	13
COMPUTER SCIENCE	114	140	149	153	185	175	162	142	128	133
MATH	38	28	28	25	27	48	53	60	61	51
NATURAL SCIENCE	5	0	0	0	0	0	0	0	0	0
PHYSICS	10	6	13	13	10	10	10	11	22	18
<b>OTHER</b>										
INTERDISCIPLINARY	2	1	2	2	2	11	5	23	18	85
MANAGEMENT	132	150	173	170	180	150	130	125	129	126
SYSTEM DYNAMICS	0	0	0	0	0	0	0	0	5	10
UNDECLARED	1	0	0	0	0	0	0	0	0	0
<b>SUB-TOTAL F/T &amp; P/T</b>	<b>731</b>	<b>777</b>	<b>797</b>	<b>775</b>	<b>831</b>	<b>840</b>	<b>813</b>	<b>786</b>	<b>837</b>	<b>895</b>
NON-DEGREE SEEKING	301	274	294	282	233	195	190	163	181	147
<b>TOTAL GRADUATE ENROLLMENT</b>	<b>1032</b>	<b>1051</b>	<b>1091</b>	<b>1057</b>	<b>1064</b>	<b>1035</b>	<b>1003</b>	<b>949</b>	<b>1018</b>	<b>1042</b>
<b>ENGINEERING</b>	<b>360</b>	<b>403</b>	<b>381</b>	<b>369</b>	<b>375</b>	<b>399</b>	<b>422</b>	<b>390</b>	<b>437</b>	<b>437</b>
	49%	52%	48%	48%	45%	48%	52%	50%	52%	49%
<b>SCIENCES</b>	<b>236</b>	<b>223</b>	<b>241</b>	<b>234</b>	<b>274</b>	<b>280</b>	<b>256</b>	<b>248</b>	<b>248</b>	<b>237</b>
	32%	29%	30%	30%	33%	33%	31%	32%	30%	26%
<b>OTHER</b>	<b>134</b>	<b>151</b>	<b>175</b>	<b>172</b>	<b>182</b>	<b>161</b>	<b>135</b>	<b>148</b>	<b>147</b>	<b>221</b>
	18%	19%	22%	22%	22%	19%	17%	19%	18%	25%
<b>UNDECLARED</b>	<b>1</b>	<b>0</b>	<b>0</b>	<b>0</b>	<b>0</b>	<b>0</b>	<b>0</b>	<b>0</b>	<b>0</b>	<b>0</b>
<b>NON-DEGREE SEEKING</b>	<b>301</b>	<b>274</b>	<b>294</b>	<b>282</b>	<b>233</b>	<b>195</b>	<b>190</b>	<b>163</b>	<b>181</b>	<b>147</b>

NOTE: Prior to 2006 Biochemistry and Chemistry data were combined in the Chemistry line. From 2006 forward Biochemistry will be reported separately.

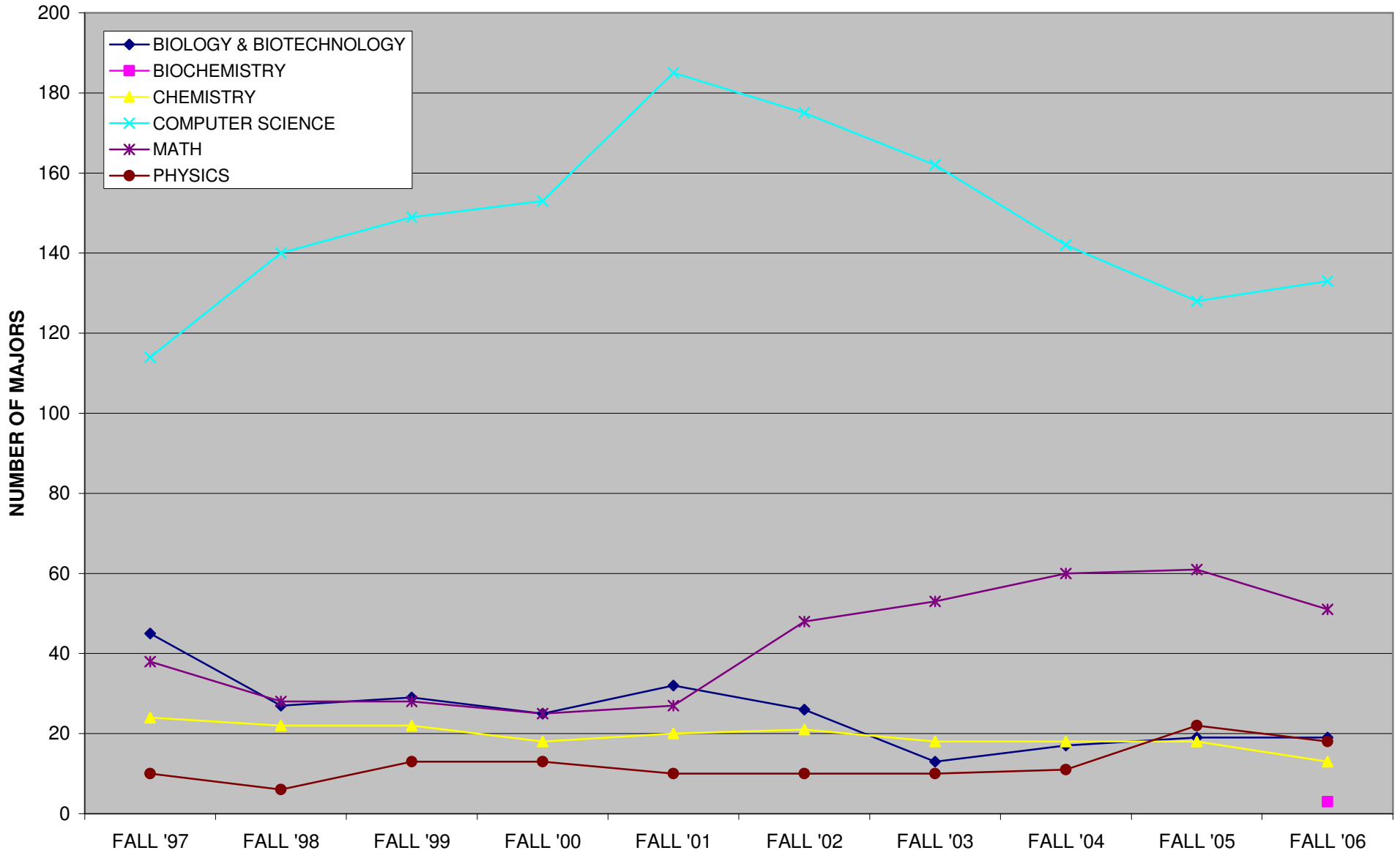
# GRADUATE ENROLLMENT BY CATEGORY



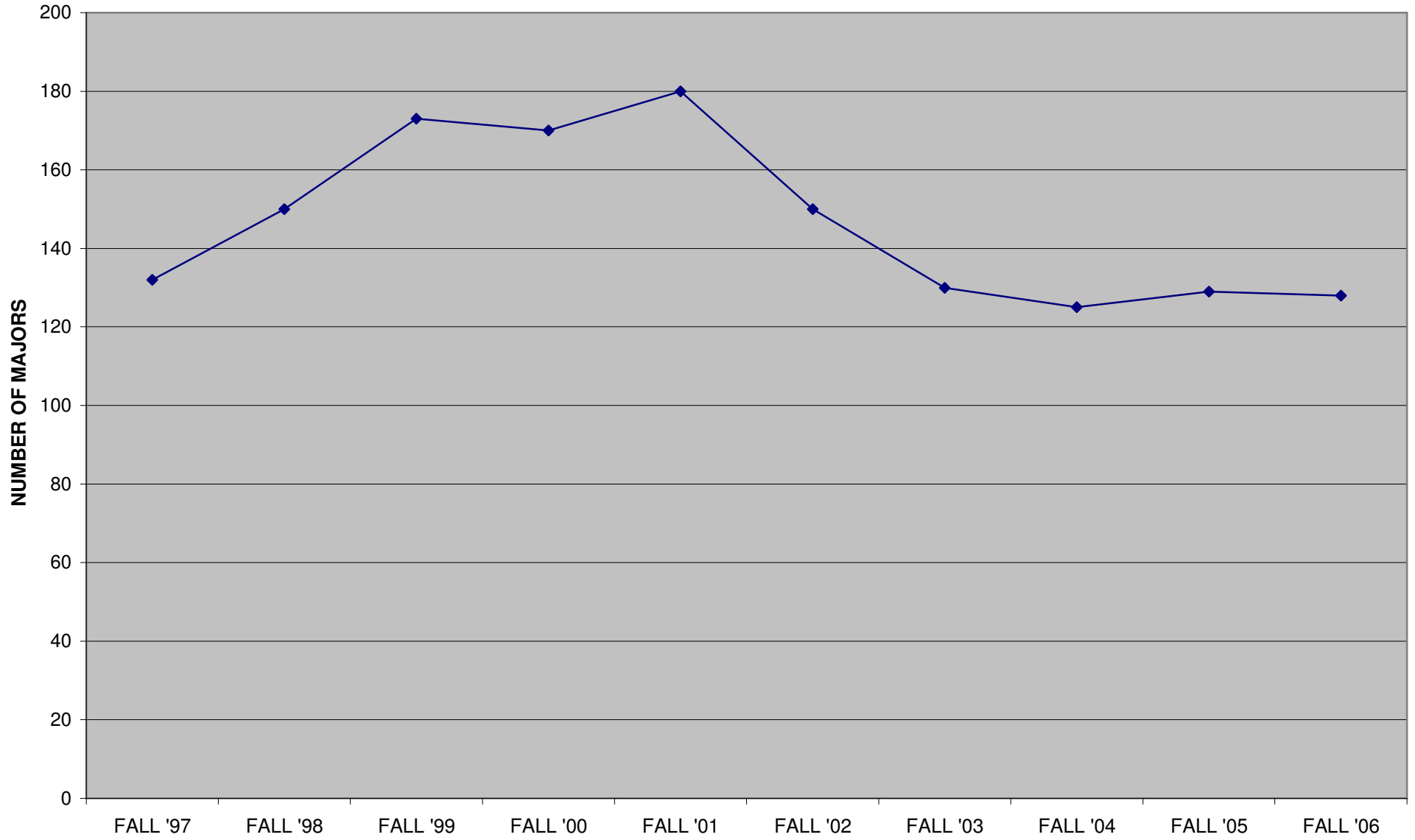
## GRADUATE ENROLLMENT – ENGINEERING



# GRADUATE ENROLLMENT – SCIENCES



## GRADUATE ENROLLMENT – MANAGEMENT



# RETENTION AND GRADUATION

## UNDERGRADUATE RETENTION RATES FOR CLASS COHORTS

<b>CLASS OF: ENTERED FALL:</b>	<b>2000 1996</b>	<b>2001 1997</b>	<b>2002 1998</b>	<b>2003 1999</b>	<b>2004 2000</b>	<b>2005 2001</b>	<b>2006 2002</b>	<b>2007 2003</b>	<b>2008 2004</b>	<b>2009 2005</b>
<b>COHORT* / YEAR 1</b>	689	688	684	662	689	700	714	631	746	733
	100%	100%	100%	100%	100%	100%	100%	100%	100%	100%
<b>YEAR 2</b>	597	624	621	599	636	640	658	582	687	659
<b>FR TO SO YR</b>	87%	91%	91%	90%	92%	91%	92%	92%	92%	90%
<b>YEAR 3</b>	561	576	588	544	565	586	624	542	638	
<b>FR TO JR YR</b>	81%	84%	86%	82%	82%	84%	87%	86%	86%	
<b>YEAR 4</b>	532	552	555	519	525	560	590	515		
<b>FR TO SR YR</b>	77%	80%	81%	78%	76%	80%	83%	82%		
<b>YEAR 5</b>	100	120	85	88	67	67	59			
	15%	17%	12%	13%	10%	10%	8%			
<b>YEAR 6</b>	14	17	26	20	11	21				
	2%	2%	4%	3%	2%	3%				

\*Cohorts are comprised of the students in the entering freshman class. They exclude transfer students. Students are never added to a cohort.

NOTE: This page is based on previously published Fact Book data.

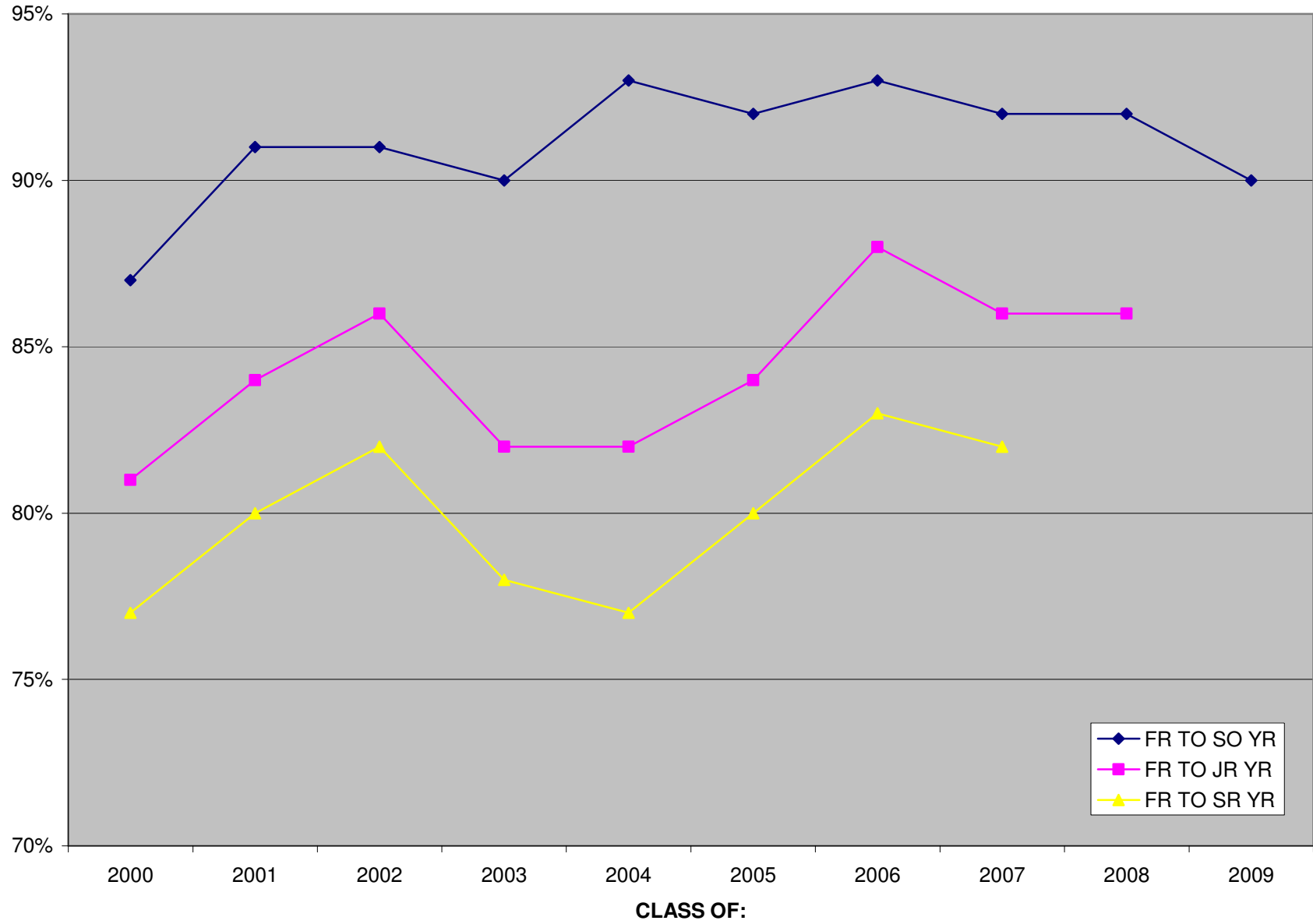
## UNDERGRADUATE RETENTION RATES FOR CLASS COHORTS\*\*

CLASS OF: ENTERED FALL:	2000 1996	2001 1997	2002 1998	2003 1999	2004 2000	2005 2001	2006 2002	2007 2003	2008 2004	2009 2005
<b>COHORT* / YEAR 1</b>	689	688	680	663	686	697	709	630	746	733
	100%	100%	100%	100%	100%	100%	100%	100%	100%	100%
<b>YEAR 2</b>	597	624	621	599	636	640	658	582	687	659
<b>FR TO SO YR</b>	87%	91%	91%	90%	93%	92%	93%	92%	92%	90%
<b>YEAR 3</b>	561	576	588	544	565	586	624	542	638	
<b>FR TO JR YR</b>	81%	84%	86%	82%	82%	84%	88%	86%	86%	
<b>YEAR 4</b>	532	552	555	519	525	560	590	515		
<b>FR TO SR YR</b>	77%	80%	82%	78%	77%	80%	83%	82%		
<b>YEAR 5</b>	100	120	85	88	67	67	59			
	15%	17%	13%	13%	10%	10%	8%			
<b>YEAR 6</b>	14	17	26	20	11	21				
	2%	2%	4%	3%	2%	3%				

\*Cohorts are comprised of the students in the entering freshman class. They exclude transfer students. Students are never added to a cohort.

\*\*This page is based on current and verifiable data.

# UNDERGRADUATE RETENTION RATES



## GRADUATION RATES FOR CLASS COHORTS

<b>CLASS OF: ENTERED FALL:</b>	<b>1997 1993</b>	<b>1998 1994</b>	<b>1999 1995</b>	<b>2000 1996</b>	<b>2001 1997</b>	<b>2002 1998</b>	<b>2003 1999</b>	<b>2004 2000</b>	<b>2005 2001</b>	<b>2006 2002</b>
<b>(MAY)</b>	364	363	340	409	419	439	404	424	454	495
<b>IN 4 YEARS</b>	53%	52%	58%	59%	61%	64%	61%	62%	65%	69%
<b>(OCT + FEB)</b>	423	431	386	455	468	490	447	481	485	
<b>IN 4 1/2 YEARS</b>	62%	62%	66%	66%	68%	72%	68%	70%	69%	
<b>(MAY)</b>	496	488	428	502	515	527	474	512	509	
<b>IN 5 YEARS</b>	73%	70%	73%	73%	75%	77%	72%	74%	73%	
<b>(OCT + FEB)</b>	511	521	438	509	524	539	484	514		
<b>IN 5 1/2 YEARS</b>	75%	75%	74%	74%	76%	79%	73%	75%		
	514	535	453	519	537	549	489	517		
<b>IN 6 YEARS*</b>	75%	77%	77%	75%	78%	80%	74%	75%		

\*Data on 6 year graduation rates prior to the Class of 2003 reflect a “6 years or more” rate. The 6 year graduation rates from Class of 2003 forward are simply a 6 year rate.

NOTE: This page is based on previously published Fact Book data.

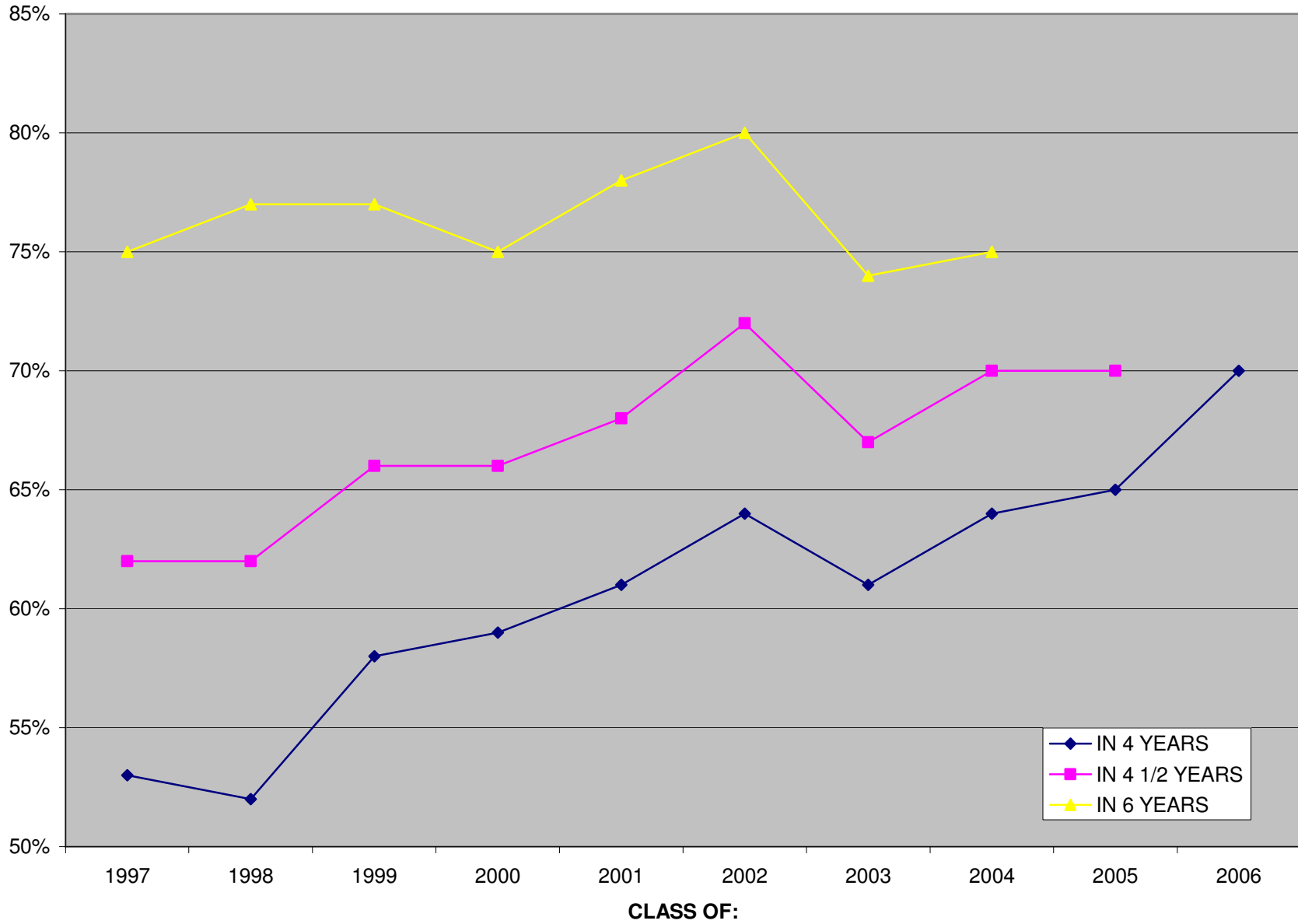
## GRADUATION RATES FOR CLASS COHORTS\*\*

CLASS OF: ENTERED FALL:	1997 1993	1998 1994	1999 1995	2000 1996	2001 1997	2002 1998	2003 1999	2004 2000	2005 2001	2006 2002
(MAY)	364	363	340	409	419	438	404	439	452	495
IN 4 YEARS	53%	52%	58%	59%	61%	64%	61%	64%	65%	70%
(OCT + FEB)	423	431	386	455	468	490	446	481	485	
IN 4 1/2 YEARS	62%	62%	66%	66%	68%	72%	67%	70%	70%	
(MAY)	496	488	428	502	515	527	473	510	509	
IN 5 YEARS	73%	70%	73%	73%	75%	78%	71%	74%	73%	
(OCT + FEB)	511	521	438	509	524	539	481	514		
IN 5 1/2 YEARS	75%	75%	74%	74%	76%	79%	73%	75%		
	514	535	453	519	537	541	486	517		
IN 6 YEARS*	75%	77%	77%	75%	78%	80%	73%	75%		

\*Data on 6 year graduation rates prior to the Class of 2003 reflect a “6 years or more” rate. The 6 year graduation rates from Class of 2003 forward are simply a 6 year rate.

\*\*This page is based on current & verifiable data.

# UNDERGRADUATE GRADUATION RATES



## BACHELORS DEGREES AWARDED

	1996-1997	1997-1998	1998-1999	1999-2000	2000-2001	2001-2002	2002-2003	2003-2004	2004-2005	2005-2006
<b>ENGINEERING</b>										
AEROSPACE	-	-	-	-	-	-	-	-	3	15
BIOMEDICAL	0	4	11	31	19	27	19	25	32	37
CIVIL	93	75	55	52	40	42	39	42	45	61
CHEMICAL	55	58	52	49	31	26	30	16	24	29
ELECTRICAL & COMPUTER	101	89	99	88	99	122	131	105	128	88
INDUSTRIAL	5	11	13	13	13	5	13	10	12	25
MECHANICAL	138	157	122	146	119	107	121	127	123	150
MANUFACTURING	12	4	5	4	2	4	1	6	5	10
<b>SCIENCES</b>										
BIOLOGY/BIOTECHNOLOGY	61	59	65	62	74	76	44	50	45	48
BIOCHEMISTRY	7	12	20	10	16	8	15	12	23	13
CHEMISTRY	17	6	7	13	10	6	2	7	5	8
COMPUTER SCIENCE	49	63	69	70	95	110	95	113	95	89
MATH	15	14	15	7	8	12	12	20	16	19
PHYSICS	7	14	6	9	6	12	8	8	7	12
<b>OTHER</b>										
ECON/SOC SCI TECH	1	1	2	2	5	4	3	8	0	5
HUMANITIES & ARTS	2	6	4	5	5	5	4	5	10	4
INTERDISCIPLINARY	4	1	1	1	2	6	7	3	0	6
MANAGEMENT	12	15	31	35	41	42	47	48	43	22
<b>TOTAL</b>	<b>579</b>	<b>589</b>	<b>577</b>	<b>597</b>	<b>585</b>	<b>614</b>	<b>591</b>	<b>605</b>	<b>616</b>	<b>641</b>

## GRADUATE DEGREES AWARDED

	1996-1997		1997-1998		1998-1999		1999-2000		2000-2001		2001-2002		2002-2003		2003-2004		2004-2005		2005-2006		
	MAST	PHD	MAST	PHD	MAST	PHD	MAST	PHD	MAST	PHD	MAST	PHD	MAST	PHD	MAST	PHD	MAST	PHD	MAST	PHD	
<b>ENGINEERING</b>																					
BIOMEDICAL	11	1	10	6	14	0	16	2	16	1	11	1	7	3	13	0	6	1	10	0	
CIVIL	19	0	10	3	10	0	13	0	4	0	8	0	10	2	12	0	9	3	16	0	
CHEMICAL	9	3	4	0	7	0	2	2	4	3	5	4	5	1	7	7	6	2	3	4	
ELECTRICAL	31	1	31	6	30	3	22	3	26	3	32	4	35	3	37	0	48	1	35	4	
ENVIRONMENTAL	16	0	6	1	10	0	4	0	10	0	6	0	6	0	3	0	7	0	8	0	
FIRE PROTECTION	25	0	26	0	24	1	25	0	24	2	27	1	35	0	31	1	17	2	29	1	
MECHANICAL	20	2	14	3	20	5	27	1	20	2	29	3	18	0	32	4	19	2	31	5	
MANUFACTURING	4	2	7	3	6	0	9	0	5	0	14	6	13	0	8	2	10	1	8	1	
MATERIALS	3	0	5	1	6	0	8	2	10	2	7	0	6	0	6	1	3	1	6	1	
<b>SCIENCES</b>																					
BIOLOGY/BIOTECHNOLOGY	10	0	13	1	17	3	12	1	11	0	7	3	12	1	7	0	2	0	6	2	
BIOCHEMISTRY																			2	0	
CHEMISTRY	0	0	3	0	8	2	7	1	1	1	5	3	10	2	4	1	2	2	4	1	
COMPUTER SCIENCE	30	0	28	0	45	0	57	2	55	1	66	1	67	3	68	1	59	2	41	7	
MATH	13	1	12	0	16	0	10	1	7	0	7	0	18	0	22	0	15	0	21	1	
NATURAL SCIENCE	0	0	5	0	0	0	0	0	0	0	0	0	0	0	0	0	0	0	0	0	
PHYSICS	0	2	1	2	0	1	0	1	1	1	1	0	4	0	2	0	3	4	1	3	
<b>OTHER</b>																					
INTERDISCIPLINARY	0	0	0	1	0	2	0	1	0	1	3	0	12	2	6	0	1	1	19	0	
MANAGEMENT	27	0	33	0	21	0	46	0	53	0	64	0	51	0	35	0	45	0	27	0	
<b>TOTAL</b>	<b>218</b>	<b>12</b>	<b>208</b>	<b>27</b>	<b>234</b>	<b>17</b>	<b>258</b>	<b>17</b>	<b>247</b>	<b>17</b>	<b>292</b>	<b>26</b>	<b>309</b>	<b>17</b>	<b>293</b>	<b>17</b>	<b>252</b>	<b>22</b>	<b>267</b>	<b>30</b>	