

·
·
·

REACH

WPI Camp REACH
100 Institute Rd.
Worcester, MA 01609

January 2002

R e u n i o n

Winter Reunion

The next reunion activity for all alumni (campers and staff) is planned for

SATURDAY,
FEBRUARY 16th, 1-3pm

We will be swimming, enjoying each other's company, and swapping stories about how things are going. In the past, we've divided up the time for different groups -- this year, ALL groups ('97- '01) should come from 1-3.

WHAT YOU SHOULD BRING:

Your bathing suit and towel. We'll provide a place to change, a light snack, and access to vending machines.

**COME IF YOU WANT TO SWIM --
OR JUST TO CHAT!!!!**

RSVP by calling 508-831-5648 or by emailing nicolett@wpi.edu by February 13. We'll leave a message on the answering machine for any weather cancellations. ♦

Many, Many Thanks

The generous agencies that supported the '01 program (along with your tuition!) are listed below. When possible, I've included their corporate websites so that you can check them out!

AQUAL Clinical Research Services
Engineering Information Foundation (<http://eifgrants.org>)
Fidelity Investments (<http://www.fidelity.com>)
General Motors (<http://gm.com/>)
Intel (<http://intel.com/>)
MassAcademy (<http://www.massacademy.org/>)
Mercury Computer (<http://www.mc.com/>)
Raytheon (<http://www.raytheon.com/>)
Technical Expositions and Conferences (<http://tecinonline.com/>)
TJX (<http://www.tjx.com/>)

And, REACH would not be possible without support from the WPI administration and community. ♦

Please read all articles!

In a recent newsletter, we invited alumni back to campus for a special workshop. The number who RSVPed was very low — and I later learned from some of them that they didn't see the article! This newsletter is a convenient and cost-effective way for us to communicate — but only if you check out all of the pages! THANKS. ♦

MassAcademy Visit

The Massachusetts Academy for Mathematics and Science (MassAcademy) is a public high school for 11th and 12th graders. It is located very close to the WPI campus, and serves students with aptitudes for math and science. It has many wonderful programs, including working with master teachers in 11th grade and attending WPI classes in 12th grade (paid for by the state!). Campers probably heard stories about the Academy from the CIT or TAs, many of which were students there.

I would like each and every REACH camper to consider attending MassAcademy.

99 campers: you will be invited to a REACH at MassAcademy day, which will be scheduled in the spring. Don't worry, 00 and 01 campers -- you'll be invited when you're freshmen in high school, too!

98 campers: Your special day on campus was last year -- but you should still be aware of the following deadlines:

January 30 (7-9pm) or February 10 (1-3pm)-- there will be an information session for prospective students and their parent/s guardians. It will be at the Academy, 85 Prescott Street. If you need a map -- check out their website (<http://www.massacademy.org/>).

January/February/March: Another chance to spend a day at the MassAcademy. Sophomores are invited to shadow a Mass Academy student for a day. Arrangements can be made by calling 508-831-5859.

February 20 (1:00pm), March 6 (6:00pm) or March 9 (9:30am) -- required exam entrance dates. Register for by calling (508) 831-5859.

April 1 -- deadline for applications

May 3 -- admissions decisions

All candidates must complete an application form which can be obtained from the Academy by calling (508) 831-5859. The 97 campers were very successful in their applications -- so please consider going for it! ♦

Do you have spare games?

Each year, we plan a variety of recreational activities for REACH. You probably have your favorites -- volleyball, board games, arts and crafts, etc. It would be SO MUCH easier for the staff if we had our own supply of simple athletic equipment, but our budget does not allow us to buy everything. However, if **you** have things that you might want to donate, that would be awesome. So, if you have extra board games, balls, etc, please contact Denise. We're just starting this drive, so everything (pretty much!) is welcome! ♦

Consider coming back to REACH -- Especially 97 and 98 Campers



I'd like to formally invite you to return to REACH this summer -- as a CIT (now known as Teaching Assistant or TA). You are finally the right grade level (as long as you finish at least your sophomore year of high school this year) to be

considered. I'd like to fill these positions for the first time with former campers and former staff members -- so please apply! The deadline is March 1. To find out more, please visit <http://www.wpi.edu/~reach/staff.html>. You can request application material there, or call (508) 831-5648. You must be available during the entire program (which is July 21 to August 2).

And -- I have found that previous, relevant experience is key to a staff member's success. Try to find ways to gain good experience by working or volunteering at places like community centers, churches, or daycare centers -- you'll learn important skills that will help you in this or other positions. Also, please stay in touch with REACH over the years (by attending reunions and sending me information about you) if you intend to return as a staff member. ♦

Submit ideas for the next newsletter!

This newsletter is published twice a year. Your submissions make each issue a success! Please mail your achievements, questions, advice you'd like to share, etc. to Denise.

More Fun Engineering Stuff

Another WPI program for you to check out -- GEMS: Girls in Engineering, Math and Science, for girls in the 9-12 grades. This year's program will be July 22-26 at WPI. The program is residential (in other words, you'll live on campus) and will let you explore math, science and engineering through hands-on activities. Tuition is \$150 and includes room and board. For more information and an application please see <http://www.wpi.edu/Admin/Diversity/Gems/> or contact the Office of Diversity and Women's Programs at 508-831-5819. ♦

Projects from the 00 Program

Goddard Memorial Park Association

Team Members:

Middle School Teacher: Gail Martinelli; TAs: Jessica Leuenberger, Zana Previti; Campers: Erin Dagle, Erin Day, Elizabeth LeBlanc, Stephanie McPherson, Jessie Miller, Fatima Mohammed, Alicia Pepper, Jill Marie Powers, Carolyn Purington, and Ally Treen.

The purpose of this project was to find an inexpensive and persuasive way to convince businesses to donate money to build the Goddard Memorial Park. The Goddard Memorial Association gave the team a budget of \$200 to come up with a plan or model to present to potential funders.

The team concluded that a computer rendering was the only option that was economically feasible. They selected software that would suit the purpose and found out how the computer printouts could be enlarged in a high-quality way for presentation purposes.

The group got together on October 14, 2000 to learn that a significant amount of money had been raised since the summer, and a computer rendition was obtained from the City of Worcester offices. A final get-together is planned for early spring.

Continued on Page 4

Cool Websites & Books About Girls

For everyone: The National Academy of Engineering has updated the Celebration of Women in Engineering Website (<http://www.nae.edu/nae/cwe/cwemain.nsf/>) to include career guidance information for parents, teachers, counselors, and mentors who work with teenage girls.

For teachers and parents: Girlstart is an organization which focuses on middle school girls. While they do programs in the Austin, Texas area (too bad for us in New England) — they also have information that can be used in other locations. <http://www.girlstart.org/>.

Although I haven't read them, I understand that there are new books available — Girls Think Of Everything and The Sky's The Limit. Written by Catherine Thimmesh, these books trumpet the discoveries and inventions of women and girls and will inspire girls to unleash their curiosity and forge new paths as inventors, scientists and explorers. For more information, please contact RGBreinin@aol.com or 914-834-6089.

For other programs, please check out the REACH website under Other Outreach Programs ♦

Summer Reunion

A summer reunion was held on July 31, 2001 for alumni campers and staff. The guests first had dinner and then participated in the recreational activity planned for that night (Escher and Optical Illusions). The list of attendees included from '97: Aimee Hart, Jenelle Pope, and Erin Dalianis; from '98: Amanda Kristoff, Sarah Rich, Nicolette Schlichting, Laurie Deitemeer; from '99: Jill Murphy, Hilary Rosen, Jessica Stevens, Katherine O'Malley, Samantha Wilner; and from '00: Christine Aloia, Aimee Girard, Stephanie McPherson, Cali O'Connor, Jill Powers, Stephanie Bearce, Julie Ducharme, Alicia Pepper, Ally Treen. I hope I didn't leave anyone out!

Do you notice a trend? We tend to get more returning campers from recent programs. Let's try to reverse this — '97 and '98 alumni, are you coming back? J ♦

Continued from Page 3

Piedmont Street Crime Prevention Team Project

Team Members:
Middle School Teacher: Jennifer J. Stillings; TAs: Sara Hicks, Jillian Crocker; Campers: Christine Aloia, Julie Ducharme, Allison Hoch, Natalie Lopez, Alison MacFadden, Carrie Mahoney, Jacqueline Mooney, Julia Randall, Bethany Stolz, and Samantha Tucker.

The team was introduced to a community organization and one of their projects -- a new playground for the Piedmont Street area of Worcester. Some work has been already done, including the selection of a site and the playground equipment that will be installed. However, the surface of the play areas and landscaping had not been figured out -- especially in regards to a limited budget and playground location.

The construction of the playground is planned to take place in Spring 2001, and the team will be invited back to participate in the construction when possible and be part of the ribbon-cutting ceremony. ♦



T-Shirt Contest

It's time once again for submissions for the next REACH t-shirt. Do you have any ideas? Please send them to Denise. AND, if you can send a graphics file through email, that would be GREAT!

A Week to Remember

February 17-23 is National Engineers Week. No, I'm serious — we really do have occasions to celebrate! The organizers have done a lot to attract girls to engineering — check it out:

<http://www.eweek.org/2002/Students/index.shtml>

Enjoy! ♦

Projects from the 01 Program

Central Massachusetts Regional Employment Board (CMREB)

Team Members:
Middle School Teacher: Mallory Macdonald; TAs: Clara Engmann, Jenelle Pope, Ping Tai; Campers: Jody Elizabeth Borhani, Liana Fay Christy, Chelsea Elizabeth Drew, Jennifer L. Giard, Julianne D. Jensen, Hannah Kilcoyne, Kristen Leigh Magnuson, Caroline Tanya Nembhard, Rebecca Marie Taylor, Amy Zhou

The problem given to the team was that CMREB was in need of a website. The site needed to be attractive to potential employers of a newly trained workforce. Volunteers were found for the site's final implementation, specifically Amy Marr and Troy B. Thompson, both part of WPI web designers.

The team spent a good deal of time looking into the CMREB organization and other websites nationwide. They completed the most crucial part of a web development project -- the collection of all of the information desired to be part of the website. They went one step further and designed the different webpages, including photographs, links, etc. All of this information plus the final report was made available to the sponsor and the final web designers (Marr and Thompson).

The group met recently (including Liana, Chelsea, Jenn, Julianne, Kristen, Becky, Amy) with staff members Amanda, Jenelle, Ping and Mallory. They carefully evaluated the draft website, and made several key comments that were passed along to the web designers. The site has been transported to CMREB, and we are presently waiting to hear from them about when it will

Continued on Page 5

Continued from Page 4

unveiled to the public.

Incidentally — try going to the yahoo search engine site (<http://www.yahoo.com>) and type in cmreb for a search. You ll get a kick out of what pops up — at least I did!

Children s Garden

Team Members:
Middle School Teacher: Daniel Seltzer; TAs: Colleen McConnell, Avital Mendelson, Crystal Tolman; Campers: Alyshia Abbascia, Nitya L. Durvasula, Marissa Fratturelli, Stephanie L Kerber, Lauren Monique Lagace, Agnes Nam, Yevgeniya Oransky, Katie Rich, Ariel Beatrice Sands, Colleen McKay Stanton

The customer for this team was the Children s Garden Daycare Center, located at the Visiting Nurses Association (VNA) of Worcester, Massachusetts. There were teaching materials that were not be used because the storage for them was inconvenient, and material was being misplaced or lost. The team investigated different solutions, keeping in mind the customer s small budget and the necessity of creating storage space that was both user friendly and safe for preschoolers and infants to be around.

The group has had one interim meeting, where they put together most of the design that they created for the teaching materials. In attendance were Alyshia, Marissa, Stephanie, Lauren, Katie, Ariel, and Colleen --- as well as staff members Amanda, Crystal and Dan. The material has

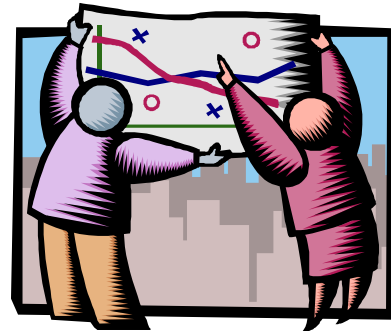
been set up at the site already, and the team will be coming together once again soon for the final ribbon-cutting ceremony.

AIDS Project Worcester

Team Members:
Middle School Teacher: Catherine McDonagh; TAs: Aimee Hart, Sara Hicks; Campers: Rosemary Benitez, Abigail Page Cooney, Bianca Marie Cruz, Danielle Ferry, Alison Bridget Medlar, Carissa L. Niro, Jillian M. O'Donnell, Megan P. Quick, Chelsea Catherine Sheehan

The purpose of this project was to redesign the office space at AIDS Project Worcester to accommodate a new pharmacy, provide privacy where appropriate, and to stay within budget. The group had a number of important recommendations to make, and provided AIDS Project Worcester with material so that final decisions could be made using input from all iinvolved.

I ve contacted the director (Edla Bloom) about the progress so far. She explained that they are in a holding pattern on our potential renovations due to the down turn in the economy (and the resulting decrease in donations to charitable organizations. However, she is still optimistic that it will happen — and I ll keep you posted! ♦



Do you have a good topic for a design project?

As I make preparations for Camp REACH 02, it occurs to me that you or your parents, guardians, teachers, etc. might be able to help me. Perhaps you could talk with them about Camp REACH s design projects. I need problems for the 02 campers to solve! If you think that you or an organization that you know of in the area might have a suitable problem, please contact Denise — or ask them to check out REACH s website. I just added information for prospective sites, plus how they can contact me to learn more.

AND -- Especially for PARENTS: The camp's tuition fees do not cover the actual cost of the camp. I have the very daunting task of raising about \$30,000 each year. If you are employed by a company in the area that is already or might in the future support outreach programs, please contact Denise. Our program fits with a number of interest areas for industry, and perhaps your affiliations could put me in touch with funding sources. A recent report in The Chronicle of Higher Education predicts that by 2028, there will be 19 million more jobs than workers who are adequately prepared to fill them. The report goes on to recommend existing outreach programs should be expanded and strengthened.

Contact Information

REACH CoFounders:

Chrys Demetry

Mechanical Engineering Dept.

(508) 831-5195; cdemetry@wpi.edu

Denise Nicoletti

Electrical and Computer Engineering Dept.

(508) 831-5257; nicolett@wpi.edu

Both Denise and Chrys are at:

100 Institute Rd.

Worcester, MA 01609

Send email to our alias:

campreach@wpi

REACH webpage -- for photos, articles, and application material:

<http://www.wpi.edu/~reach>

We need your new postal or email address!

If you move: Please take a moment to let Denise know. We'd love to keep in contact with everyone! Your parents take care of so much when you move -- this is one grown-up task that is not too early to learn!

If you have a new email address or if your email address changes, please let Denise know so that we can update our email alias. This allows you to get announcement of REACH reunion events as soon as they are known -- as well as other useful postings (about one per month). ♦

Question: Is this a picture of a glamorous actress, a patent-holding electrical engineer, or both? For the answer, check out <http://www.inventions.org/culture/inventors/female/lamarr.html>

