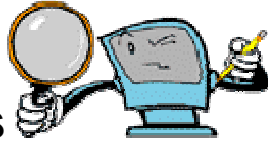


Energy Cryptograms



There are energy messages hidden in this secret code! Can you crack the code and solve the secret message?

In this code, one letter stands for another. For example, if the letter **H** stands for the letter **S** in the code word below, it will equal **S** throughout that sentence. Single letters, short words and words with an apostrophe give you clues to locating vowels. The solution can be found by trial and error, using the letters translated in the code word that is given.

EXAMPLE: Code Word: L W H A R T Z X
Translation: G A S O L I N E

Puzzle

H A R W K X Z X K L D T H O R X W Z
- - - - - - - - - - - - - - - - -

W Z B K X Z X E W C R X .
- - - - - - - - - - - - .