



WPI

Pathways: Journey of Art & Sciences (over 18 months)



Jean King, PhD

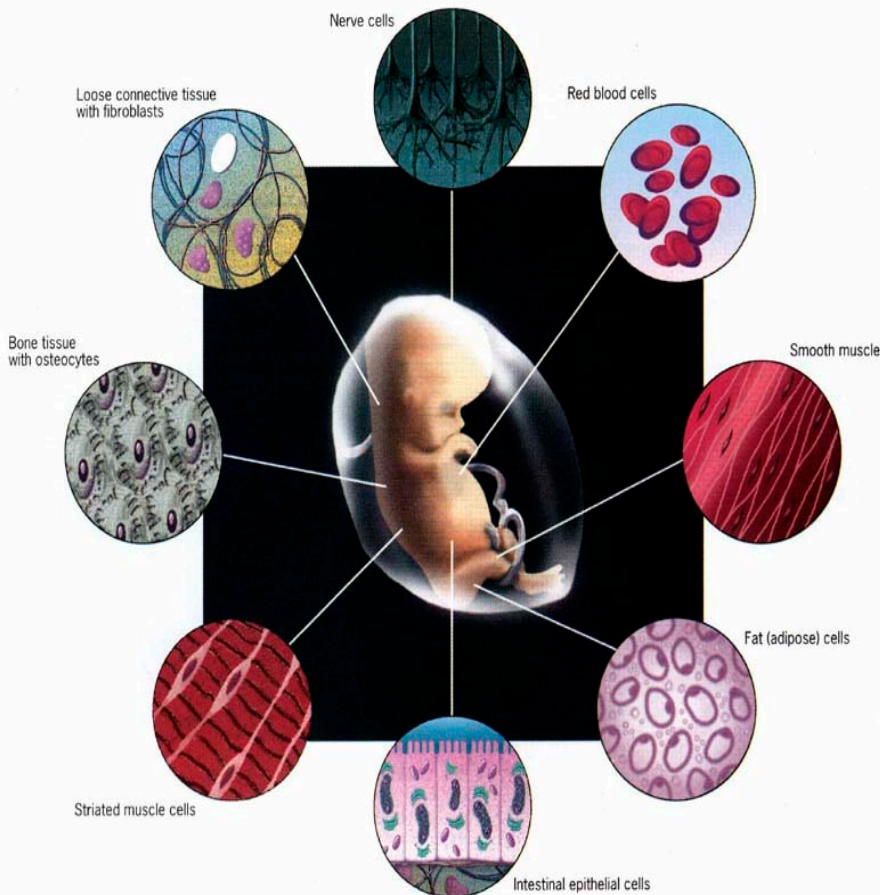
Peterson Family Dean of Arts &
Sciences



Where do we begin:

- My Big Question: How will we position ourselves to ensure the future success of the Arts and Sciences at WPI?
- The 2 Big Questions: What is the role of Arts and Sciences at WPI? What is the role of the Dean of Arts and Sciences at WPI?

Determining Who We Are & Where We are Going



VISION

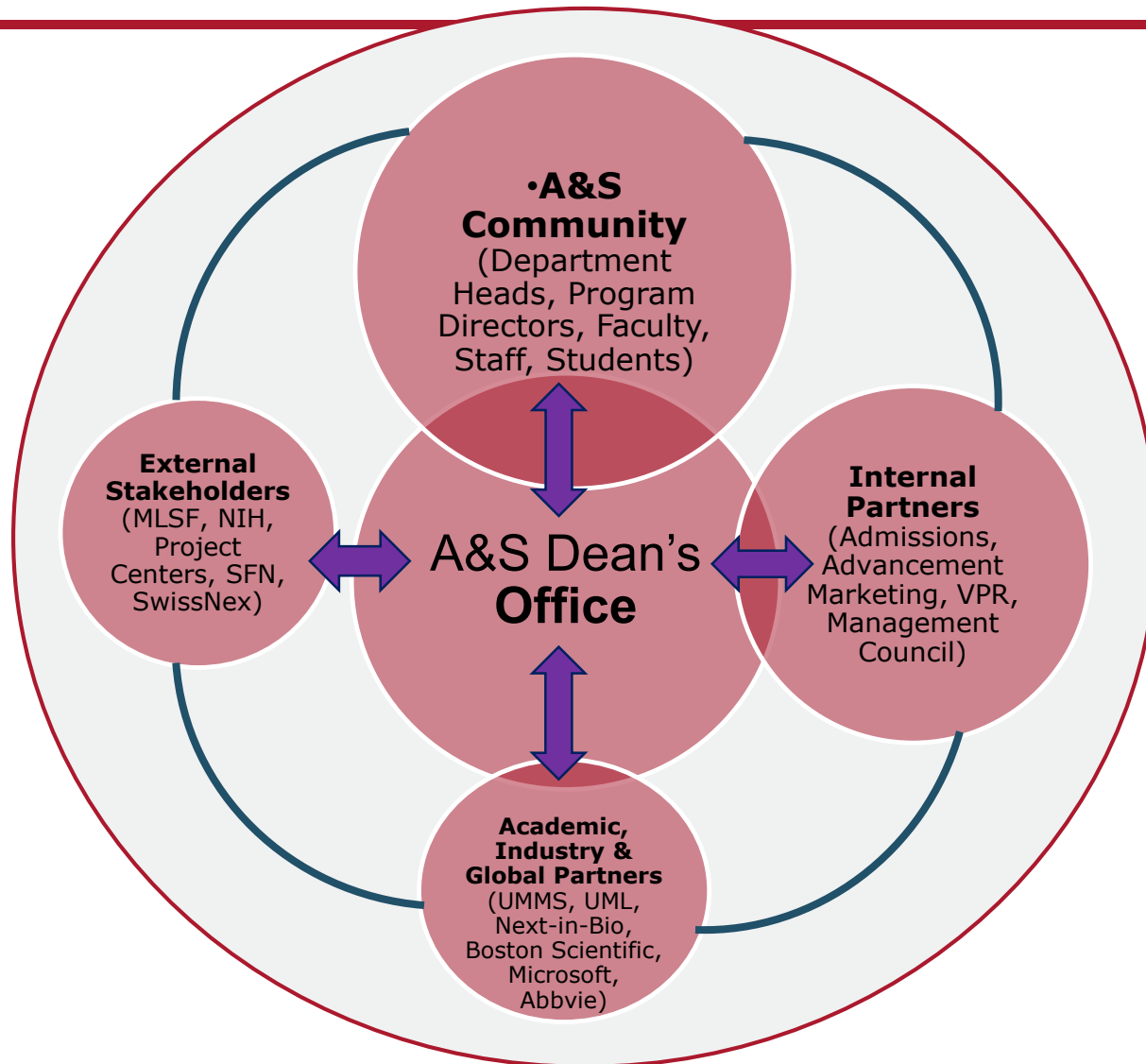
To inspire members of the Arts and Sciences community to be creators, scholars, inventors, and responsible global citizens

MISSION

To bring together cross-disciplinary and diverse perspectives to promote discovery and communication, advance knowledge, and improve the human condition



Strategic Vision: From Margins to Center



Some Efforts to Support and Elevate the Impact of A&S in the WPI Ecosystem



Faculty Focus

- Faculty recruitment, development, mentoring & engagement
- Building the A&S graduate programs
- Strengthening the A&S research enterprise



Educate, Excite & Engage Students

- New academic programs
- Supporting A&S students
- A&S Advisory Councils
- Specific groups (SACNAS)
- Summer research fellowships
- Dean's Fund for Graduate Students



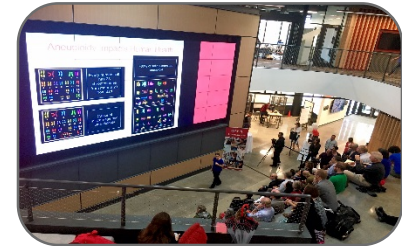
Cross-Collaborations (Provost, Deans/VPR, Adm. MC)

- STEM Faculty Launch
- Social Justice Summit
- A&S Week
- Critical Conversations
- Cross-divisional initiatives
- Cross-cutting themes
- Joint PhD program-UMMS
- New Global Initiatives

Approximately **70%** of Dean's time is spent meeting and engaging with faculty and collaborating with A&S department and program leadership

Quick Highlights

- **Faculty**
 - 54% of WPI faculty and 59% of all UG credits
 - 52% of all WPI research funding
- **Students**
 - Undergraduate research awards, Dean's graduate fund, student advisory councils
- **Neuroscience Initiative**
 - Julia Kasparian Fund for Neuroscience Research, Music & the Brain, MS program
- **Community**
 - A&S Week, Critical Conversations
- **Diversity**
 - SACNAS, Social Justice Summit, STEM Faculty Launch
 - Several A&S programs have more women than WPI average (BBT, CBC, Math, BCB, Data Science)

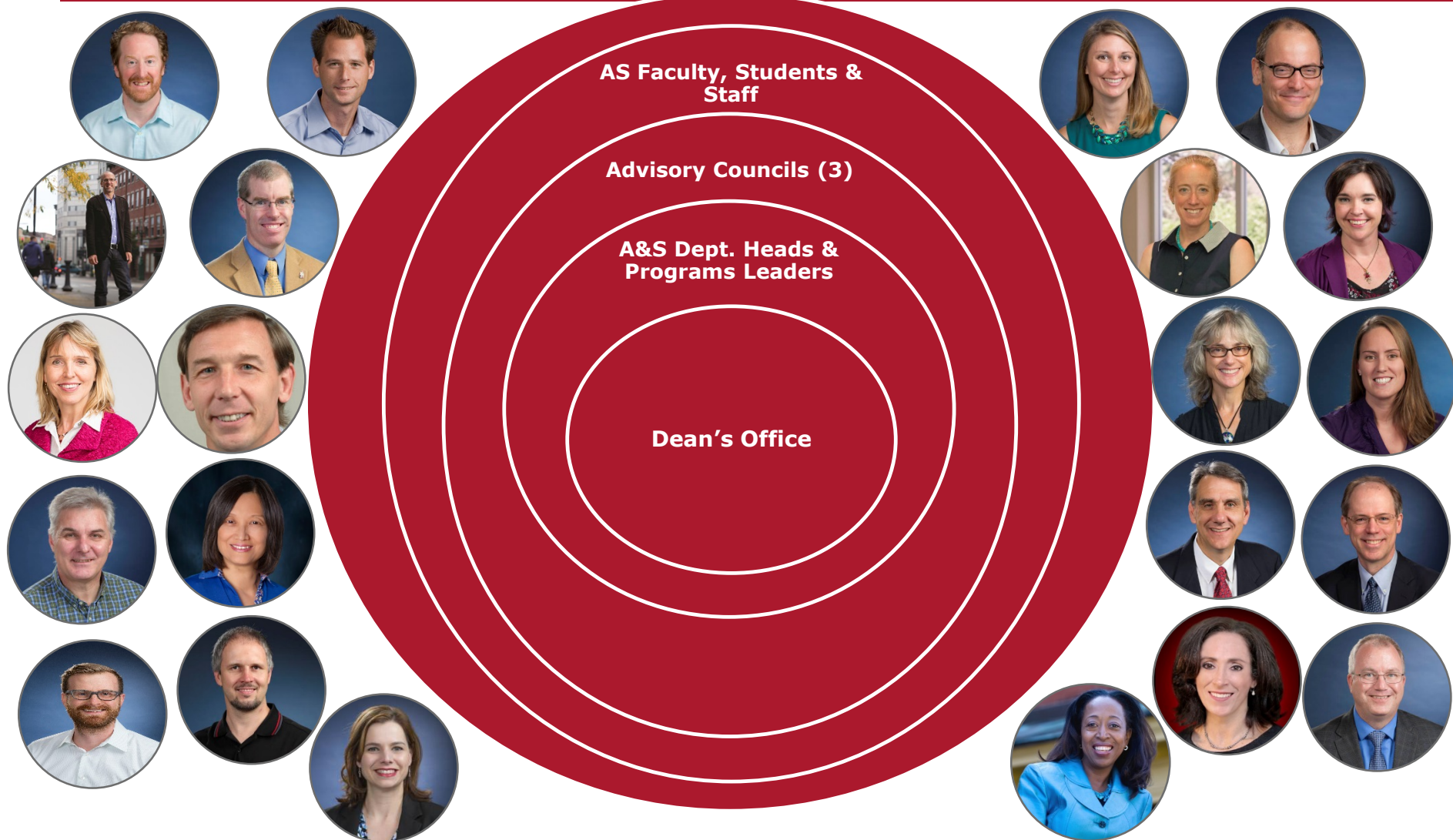


In Brief: Role of the A&S Dean



- Develop and implement cohesive strategic vision (external and internal) for the arts & sciences
- Support budget priorities and help ensure fiscal responsibility
- Communicate, support, and inspire faculty, students and staff to advance our academic mission
- Foster new disciplinary and transdisciplinary activities and opportunities (cross divisions; academic entities etc.)
- Work internally and externally to enhance the success of Arts & Sciences at WPI as an integrated organism to achieve our goals: 1) Global Polytechnic, 2) Significant impact on the world

This Is "Us"



Worcester Polytechnic Institute

Thanks

PATHWAYS

of CREATIVITY & DISCOVERY

ARTS & SCIENCES AT WPI



Worcester Polytechnic Institute