

# Your guide to Applying to Ph.D. Programs

Essential Resources for Navigating Graduate School Applications

## What is a Ph.D.?

A Ph.D. is the highest academic degree, involving years of advanced study and original research in a specialized field. In industry, Ph.D. holders are valued for solving complex problems, driving innovation, and leading research. In academia, it is essential for becoming a professor or leading a research group.

## Is a Ph.D. right for me?



| Questions to Ask Yourself   | Answer  |
|---|---|
| Do you have specific research topic you're passionate about and want to explore deeply? | A Ph.D. program is ideal for deep exploration of specific research topics that interest you.                          |
| Do you enjoy exploring topics deeply and sharing your insights with others?             | Ph.D. programs involve detailed study and frequent opportunities to present findings in conferences and publications. |
| Do you want to lead innovations and research projects?                                  | Ph.D. programs require strong self-motivation and independent work.   |

## How do I find the Ph.D. program that is right for me?



Focus on a topic you're passionate about and want to explore deeply.



Consider programs that match your research interests and career goals. Explore faculty expertise, labs, and resources.



Reach out to potential advisors with questions about their research, lab culture, and available positions.

## Ph.D. Application Checklist



Prepare Statement of Purpose  
[Resources](#)



Letters of Recommendation  
[Learn More Here](#)



Submit Transcripts & Test Scores  
[Learn More Here](#)



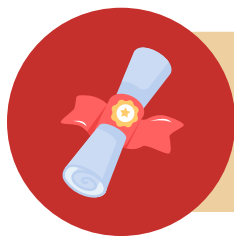
Apply for Funding  
[Resources](#), [WPI Fellowships](#)



## General Ph.D. Program Timeline: From Start To Finish

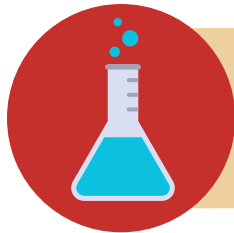


## How to Secure Funding for Your Ph.D.



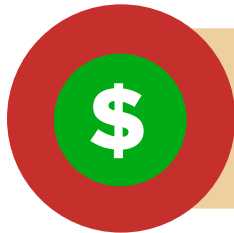
### Fellowships

- Apply for prestigious programs: [NSF](#), [GEM](#), [Ford Foundation](#), [NDSEG](#), [SMART](#), [Kirschstein-NRSA](#).



### Research & Teaching Assistantships

- Work in labs or as a teaching assistant while earning a stipend. [Learn more](#)



### Grants & External Scholarships

- Look for field-specific grants or international scholarships. [Resource](#)

## How to Apply for Fellowships

1

### Research Fellowships

- Identify fellowships that align with your research and career timeline.

2

### Prepare Application Materials

- Tailor your personal statement, CV, proposal, and letters of recommendation.

3

### Meet Deadlines

- Stay organized and submit materials early.

4

### Follow-Up

- Confirm submission and follow up if needed.

## Other Links and Resources

[Writing a Successful Fellowship Proposal](#)

[Ph.D. Admission Guide](#)

[Exams: GRE TOEFL](#)