

OpenSciEd High School Launch Training



WPI

STEM
Education
Center

Target Audience: Grades 9-12 MA science educators, coaches and administrators

Note: This course is open to any currently employed Massachusetts public, charter or private school high school science educator who is currently using or plans to use OpenSciEd in the next academic year (2025 and/or 2026 implementation). This includes science teachers, special education teachers, ESL or language support teachers, principals, coaches, and other school or district administrators whose work relates to science. Space is limited. Priority will be given to educators from districts participating in DESE's High School HQIM Leadership Academy Program.

Course Description:

The STEM Education Center at WPI in collaboration with DESE's High School HQIM Leadership Academy Project is offering a 4-day virtual, interactive OpenSciEd (OSE) high school launch course. The course guides educators through the shift toward student-centered science teaching & learning, where students 'figure out' and explain a real-world phenomenon, as well as the implementation of high-quality instructional materials (HQIM). Throughout the course, participating educators will experience the different routines & pedagogies associated with the storyline model of teaching science (and each OSE unit), as well as work with colleagues to review a subject-specific OSE unit and plan for implementation in their classrooms.

This course awards:

► **PDP Certificate, 24 PDP's** – awarded upon completion of the 4-day course and submission of coursework

OR

► **Graduate Credit, 3 graduate credits** (in lieu of PDPs)– awarded upon completion of the 4-day course, 7 follow-up sessions & submission of coursework

During the course, participants will:

1. Expand their knowledge about the shift in science education instruction: focusing on student-led science inquiry (the storyline)
2. Unpack the process of “figuring out” and how it aligns with Massachusetts STE framework (core ideas & practices)
3. Experience the different routines & pedagogies associated with the storyline model for high school, as modeled by an experienced educator
4. Work with colleagues to review a subject-specific OSE unit and plan for implementation in their classrooms



Course Information:

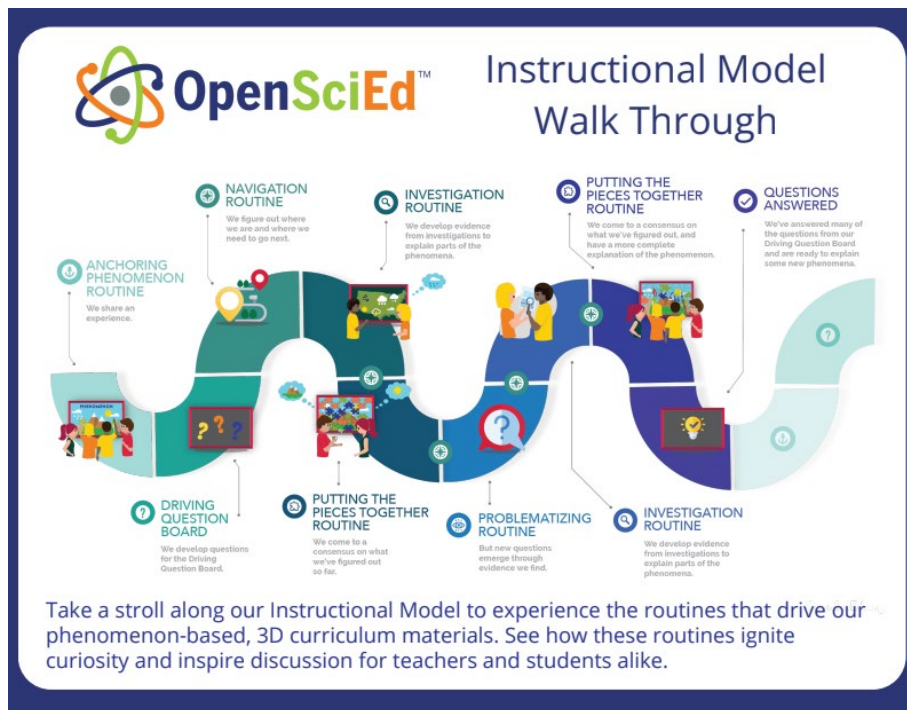
| PDP only Option | Graduate Credit Extension |
|--|---|
| <ul style="list-style-type: none">• Day: Tuesday – Friday (<i>February Break</i>)• Time: 8:45 am – 3:30 pm ET• Dates: February 18-21, 2025• Format: Fully online via Zoom (<i>collaborative & interactive</i>)• Registration Fee*: FREE• Stipend*: \$300• PDPs*: 24 <p><i>*The \$850 registration fee and stipend are funded by the DESE High School HQIM Leadership Academy Program. Stipend and PDPs will be provided upon course completion described on the following page.)</i></p> | <ul style="list-style-type: none">• Day: Tuesday• Time: 6:00-8:30 pm ET• Dates: March 18 – May 6, 2025; total of 7 sessions. (<i>No session on 4/22</i>)• Format: Fully online via Zoom (<i>collaborative & interactive</i>)• Registration Fee: \$665 (<i>includes a \$15 student fee</i>)• Graduate Credits: 3 <p><i>Important: Participants taking the course for graduate credit must complete the 4-day course in February in addition to the requirements above.</i></p> |

OpenSciEd High School Launch Training



WPI

STEM
Education
Center



Format, daily schedule & breaks:

The virtual PD will be conducted via Zoom and is designed to be collaborative and interactive.

- *Morning sessions will run from ~8:45-12:15.* During most morning sessions **participants take the role of students** in exploring a phenomenon and storyline routines.
- *Afternoon sessions will run from ~1:00-3:30.* Afternoon sessions are intended for connecting with subject specific colleagues to review **your** chosen unit and identify the components we experienced in the morning session.

Each session will have at least one 10 min break; a 45-min lunch break is scheduled daily. We encourage participants to walk away from the computer during lunch break.

Course Completion Requirements for Stipend and PDPs:

*Course completion requires participants to:

1. Attend all course sessions (4-days)
2. Complete an end of course survey
3. Complete a unit reflection document

Space is limited. Priority will be given to educators from schools/districts participating in DESE's High School HQIM Leadership Academy Program: Chelsea, Clearway School, Collegiate Charter of Lowell, Fall River, Foxborough, Holyoke, Match Charter School, Neighborhood House Charter School & Veritas Preparatory Charter School.

Visit our [website](#) to **REGISTER**.

For questions, contact Donna Taylor at dtaylor@wpi.edu