

# Storyline Model of Teaching and Learning Science



WPI

STEM  
Education  
Center

**Target Audience:** Grades K-12 science educators, coaches and administrators

**Note:** This course is ideal for anyone looking to implement an OpenSciEd unit, but will also support those interested in exploring the storyline model in general, as well as other HQIM.

## Course Description:

This storyline course models and guides educators through the shift toward student-centered science teaching & learning, where students ‘figure out’ and explain a real-world phenomenon, as well as the implementation of high-quality instructional materials (HQIM). Throughout the course, participants will experience the different routines & pedagogies associated with the storyline model of teaching science (using an [OpenSciEd](#) unit), as well as work with colleagues to review a grade-specific storyline-based unit and plan for adaptation or implementation in their classrooms.

### This course awards:

► **PDP Certificate, 24 PDP's** – awarded upon completion of the 4-day course and submission of coursework

OR

► **Graduate Credit, 3 graduate credits** (in lieu of PDPs)– awarded upon completion of the 4-day course, 7 follow-up sessions & submission of coursework

During the course, participants will:

1. Expand their knowledge about the shift in science education instruction: focusing on student-led science inquiry (the storyline)
2. Unpack the process of “figuring out” and how it aligns with Massachusetts STE framework (core ideas & practices)
3. Experience the different routines & pedagogies associated with the storyline model, as modeled by an experienced educator
4. Work with colleagues to review a subject or grade-specific OSE unit and plan for implementation in their classrooms



## Course Information:

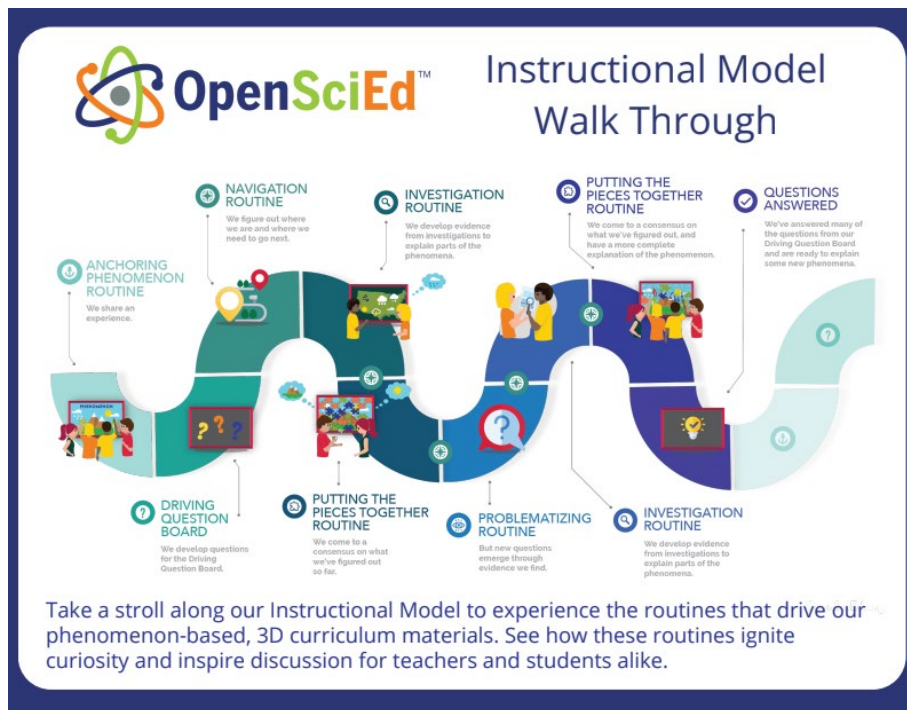
PDP only Option	Graduate Credit Extension
<ul style="list-style-type: none"><li>• <b>Day:</b> Tuesday – Friday</li><li>• <b>Time:</b> 8:45 am – 3:30 pm ET</li><li>• <b>Dates:</b> July 22-25, 2025</li><li>• <b>Format:</b> Fully online via Zoom (collaborative &amp; interactive)</li><li>• <b>Registration Fee:</b> \$850</li><li>• <b>PDPs:</b> 24</li></ul>	<ul style="list-style-type: none"><li>• <b>Day:</b> Tuesday</li><li>• <b>Time:</b> 6:00 - 8:30 pm ET</li><li>• <b>Dates:</b> Oct. 21 – Dec. 9, 2025; total of 7 additional sessions. (No session on 11/11/25)</li><li>• <b>Format:</b> Fully online via Zoom (collaborative &amp; interactive)</li><li>• <b>Registration Fee:</b> \$1,515 (includes a \$15 student fee)</li><li>• <b>Graduate Credits:</b> 3</li></ul> <p><i>Important: Participants taking the course for graduate credit must complete the 4-day course in July in addition to the requirements above.</i></p>

# Storyline Model of Teaching and Learning Science



WPI

STEM  
Education  
Center



## Format, daily schedule & breaks:

The online PD is designed to be collaborative and interactive.

- *Morning sessions will run from ~8:45-12:15.* During most morning sessions **participants take the role of students** in exploring a phenomenon and storyline routines.
- *Afternoon sessions will run from ~1:00-3:30.* Afternoon sessions are intended for connecting with subject specific colleagues to review *\*your\** chosen unit and identify the components we experienced in the morning session.

Each session will have at least one 10 min break; a 45-min lunch break is scheduled daily. We encourage participants to walk away from the computer during lunch break.

Visit our [website](#) to **REGISTER**.

For questions, contact Donna Taylor at [dltaylor@wpi.edu](mailto:dltaylor@wpi.edu)