

OpenSciEd High School Launch Training



WPI

STEM
Education
Center

Target Audience: Grades 9-12 MA science **teachers, coaches** and **administrators**

*Note: This course is open to any currently employed Massachusetts public, charter or private high school science educator who is currently using or plans to use OpenSciEd in the next academic year (2025-26 implementation). This includes science teachers, special education teachers, ESL or language support teachers, principals, coaches, and other school or district administrators whose work relates to science. **Space is limited.***

Course Description:

The STEM Education Center at WPI in collaboration with DESE's High School HQIM Leadership Academy is offering a 4-day OpenSciEd (OSE) high school launch course **in-person at WPI**. The course guides educators through the shift toward student-centered science teaching & learning, where students 'figure out' and explain real-world phenomena, and the implementation of high-quality instructional materials (HQIM). Throughout the course, educators will experience the different routines & pedagogies associated with OSE, as well as work with colleagues to review a subject-specific OSE unit and plan for implementation in their classrooms.

The **administrator track** offers immersive multi-faceted learning, gaining the experience of learners, teachers, and leaders. Administrator sessions will address classroom observations, teacher support, PLCs, and the systems and structures related to scheduling, pacing, assessments, and grading.

During the course, participants will:

1. Expand their knowledge about the shift in science education instruction: focusing on student-led science inquiry (the storyline)
2. Unpack the process of "figuring out" and how it aligns with Massachusetts STE framework (core ideas & practices)
3. Experience the different routines & pedagogies associated with the storyline model for high school, as modeled by an experienced educator
4. Work with colleagues to review a subject-specific OSE unit (teachers) and plan for school/department implementation (administrators).



This course awards:

► **PDP Certificate, 24 PDP's** – awarded upon completion of the 4-day course and submission of coursework

OR

► **Graduate Credit, 3 graduate credits** (in lieu of PDPs)– awarded upon completion of the 4-day course, 7 follow-up sessions & submission of coursework

Course Information:

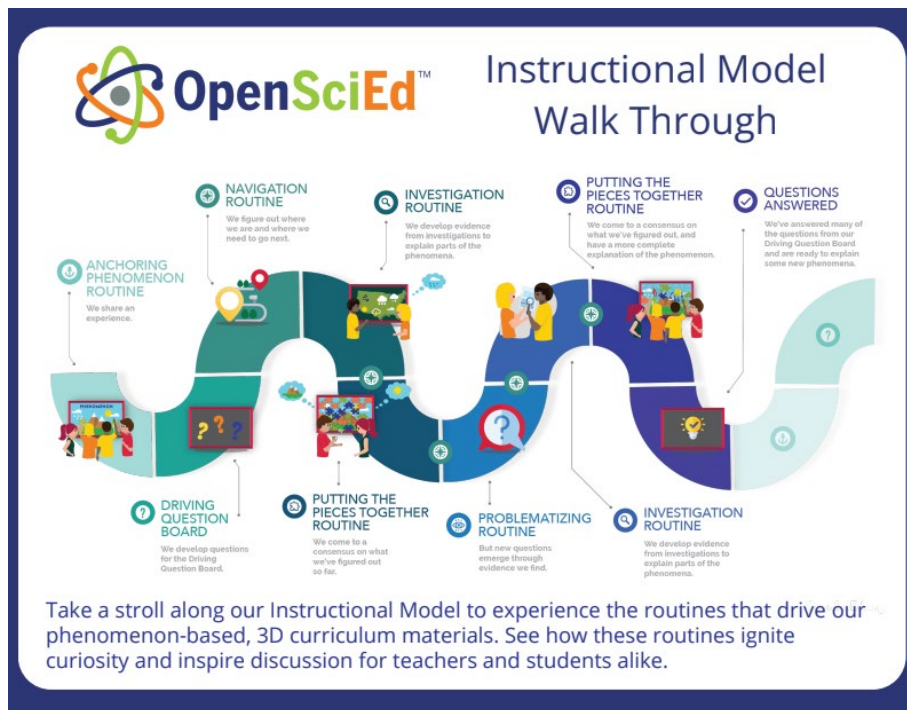
| PDP only Option | Graduate Credit Extension |
|--|--|
| <ul style="list-style-type: none">• Day: Tuesday – Friday• Time: 8:45 am – 3:30 pm ET• Dates: August 5-8, 2025• Format: In-person at WPI• Registration Fee*: FREE• Stipend*: \$300• PDPs*: 24 <p><i>*The \$850 registration fee and stipend are funded by the DESE High School HQIM Leadership Academy Program. Stipend and PDPs will be provided upon course completion described on the following page.)</i></p> <p>Note: Virtual Option July 22-25 – email Donna for info.</p> | <ul style="list-style-type: none">• Day: Tuesday• Time: 6:00 - 8:30 pm ET• Dates: Oct. 21 – Dec. 9, 2025; total of 7 additional sessions. <i>(No session on 11/11/25)</i>• Format: August is at WPI, Fall sessions are virtual• Registration Fee: \$665 <i>(includes a \$15 student fee)</i>• Graduate Credits: 3 <p><i>Important: Participants taking the course for graduate credit must complete the 4-day course in August in addition to the requirements above.</i></p> |

OpenSciEd High School Launch Training



WPI

STEM
Education
Center



Format, daily schedule & breaks:

The August in-person PD will be conducted at WPI and is designed to be collaborative and interactive.

- *Morning sessions will run from ~8:45-12:15.* During most morning sessions **participants take the role of students** in exploring a phenomenon and storyline routines.
- *Afternoon sessions will run from ~1:00-3:30.* Afternoon sessions are intended for connecting with subject specific colleagues to review **your** chosen unit and identify the components we experienced in the morning session.

Coffee and a light breakfast will be provided daily. Each session will have at least one 10 min break and a 45-min lunch break. You may bring your own lunch or purchase a lunch on campus.

Note: For those taking the Graduate Credit Extension, the Fall Tuesday sessions will be online.

Course Completion Requirements for Stipend and PDPs:

*Course completion requires participants to:

1. Attend all course sessions (4-days in-person at WPI)
2. Complete an end of course survey
3. Complete a unit reflection document

Space is limited. Priority will be given to educators from schools/districts participating in DESE's High School HQIM Leadership Academy Program: Chelsea, Clearway School, Collegiate Charter of Lowell, Fall River, Foxborough, Holyoke, Match Charter School, Neighborhood House Charter School & Veritas Preparatory Charter School.

Visit our [website](#) to **REGISTER**.

For questions, contact Donna Taylor at dtaylor@wpi.edu