



WPI

Family Resources

First Year Welcome Experience 2025

Lauren Buffone, LICSW, Director of Student Success and Support

Amy Curran, Director, Office of Accessibility Services

Matt Foster, Director, Housing and Residential Experience Center

Agenda

- Transitioning from high school to college
- Parent/guardian information and resources
- What do I do if I am worried?
- How WPI works with parents
- Student's support network
- Housing and Residential Experience Center
- Third party proxy access to Workday
- Summer WPI due dates and tasks
- Preparing to parent in a different stage of life
- Questions!

Transitioning from high school to college

- Find this on the Parents & Guardians page for more
- Triangle theory

High school	College
Time is structured by others.	Students structure their own time.
Students are told what to do and if behavior is out of line.	Students are responsible for their own choices/decisions and consequences.
Teachers take attendance	Professors may not take attendance.
Student may be woken up for school to get there on time by someone.	Students are responsible for getting to class on time.
May get help with scheduling and self-care activities.	Student's manager their own scheduling and self-care (doctor, laundry, haircut, etc.)

WPI Parents & Guardians Information

- [Parents & Guardians | Worcester Polytechnic Institute \(wpi.edu\)](https://wpi.edu/parents-guardians)
- Involvement
 - Parents and Friends newsletter
 - University Advancement Parent Ambassadors
 - Herd Highlights
 - Official WPI Parents FB page
- Expansive and detailed website – it's easy to use search feature

Guiding your student to support

- Supports available for your student
 - [Student Resources & Support | Worcester Polytechnic Institute](#)

Student Health & Well-being

HELP. It's OK to need it. It's important to ask for it. Here's how to find it.

WPI is committed to making sure our students have the resources and support they need to thrive and succeed, both academically and personally.

Center for Well-Being


Student Development & Counseling Center


Health Services


Office of Accessibility Services


Are You Concerned About a Student? Take action now: [I'm Concerned About a Student Form](#)

Helpful Links


Email Access Instructions


Academic Catalogs


Academic Calendar


Academic Advising

What should I do if I am worried?

Emergencies and Immediate Safety
Campus Police 24/7/365
508-831-5555

General Concerns:

Submit an “I’m Concerned About a Student” form

Call the Dean of Students office: 508-831-5201

Email the Dean of Students office:
dean-of-students@wpi.edu

How WPI works with parents

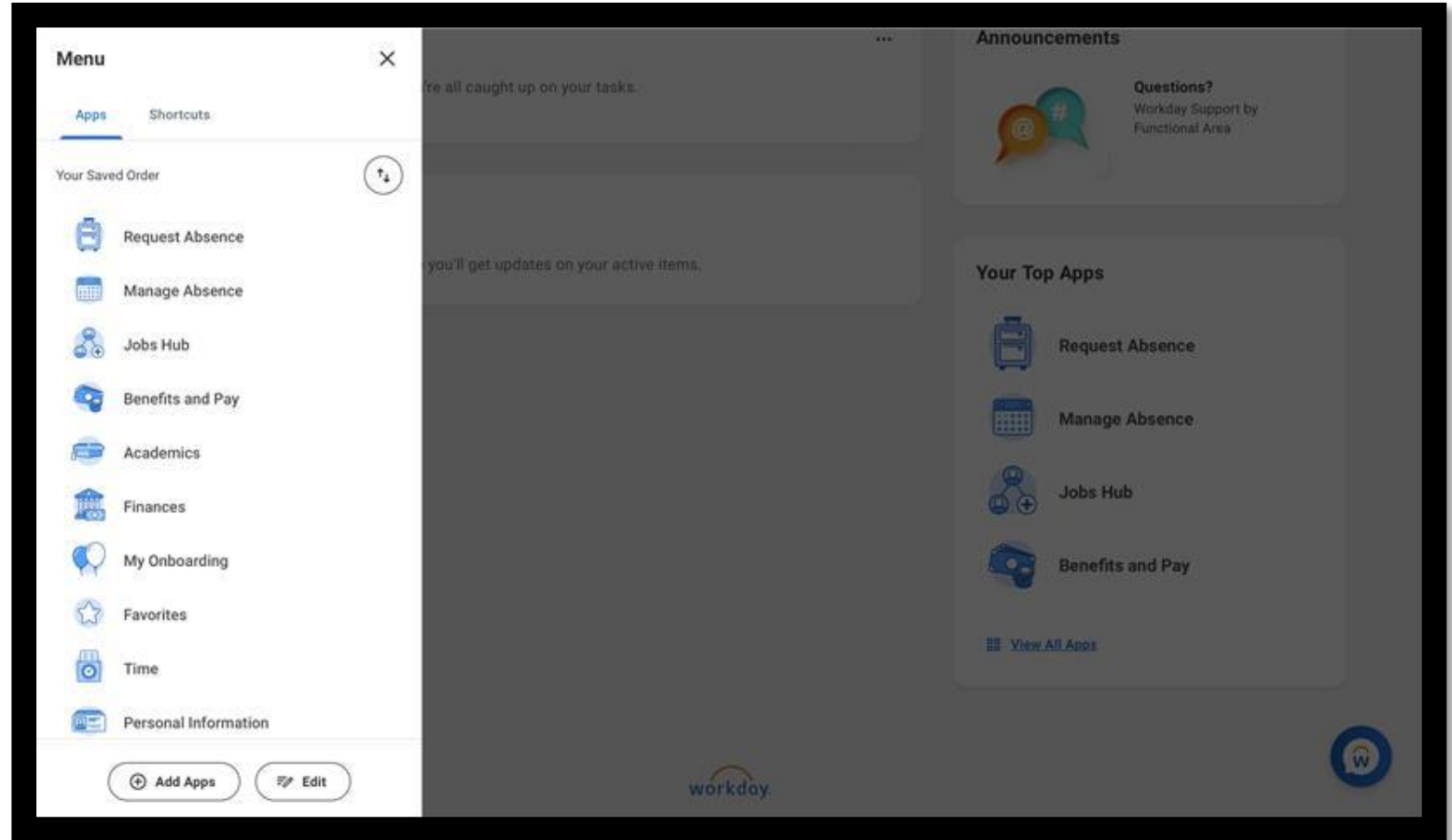
- Case by case for the student/situation .
- Encourage you to reach out to one source / touch point
- Update Workday with emergency contact, cell phone numbers, and local address (if applicable)
- Power of attorney:

A general power of attorney designates a competent adult to make important decisions for another adult if doctors believe they can no longer make those decisions for themselves.

- Having a power of attorney does not allow you to have access to your students protected health/academic information on campus
- In place for emergencies

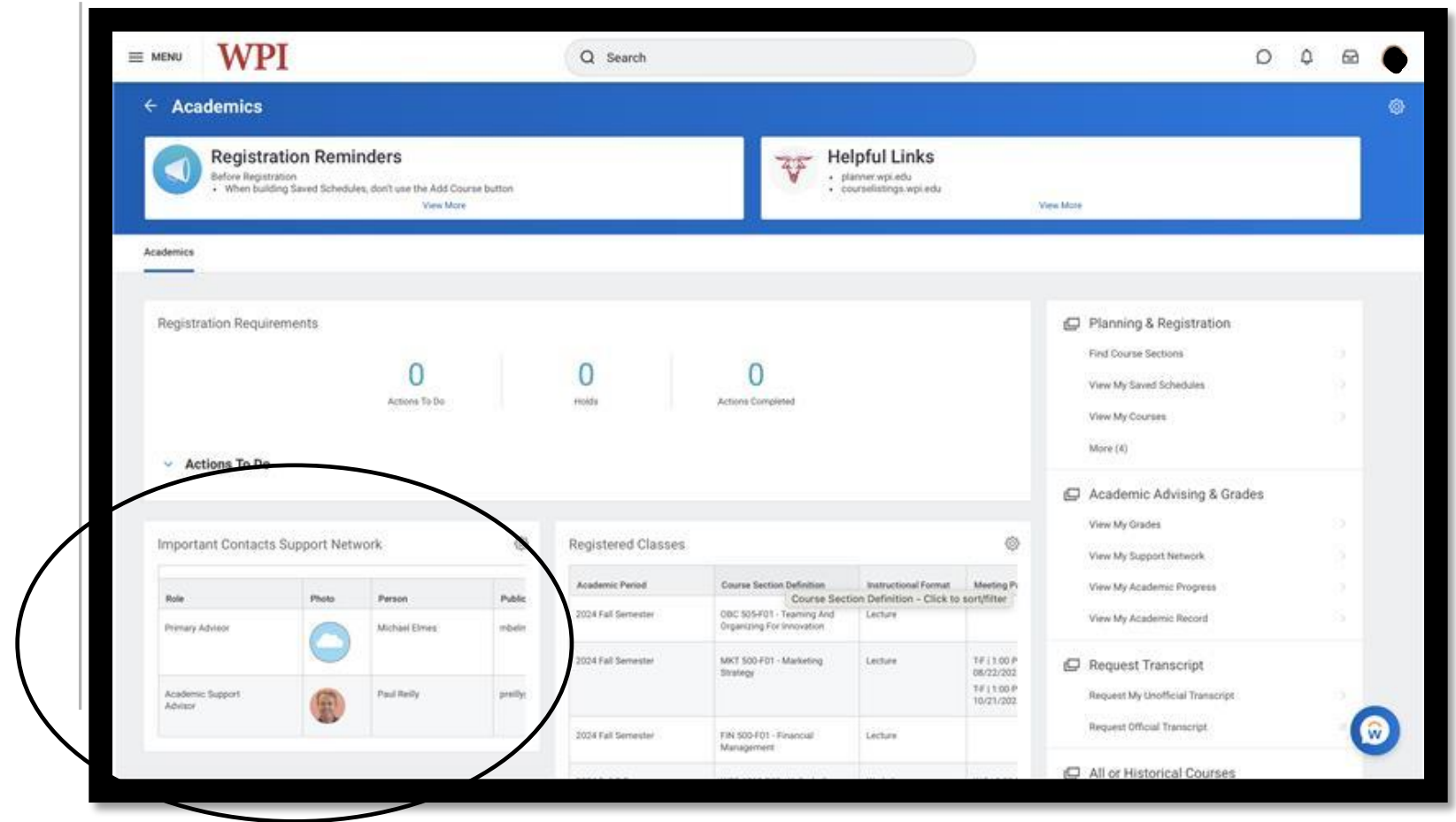
Student's Support Network

- Instructions:
 - Open Workday
 - Views all Apps (menu)
 - Choose Academics
 - View "Important Contacts Support Network" for advisors



Student's Support Network

- Student support network:
 - Insight Advisor
 - Academic support advisor
 - Faculty advisor (assigned Spring of first year after declaring officially)
 - OAS support (if applicable)
 - Additional faculty (if applicable)
- Insight team
 - Fall of first year
 - Professional staff
 - Resident Advisor (student)
 - Community Advisor (student)



Housing and Residential Experience

- Students will have a session today:
 - To learn about Housing selection and the steps in the process
 - How to find a roommate
 - And more!
- [Housing webpage](#)
- [Residences page](#) (tours and photos)
- [What to bring and what not to bring](#)
- More questions?
 - Staff will be at the resource fair and on the expert panel today!

Third Party Proxy Access

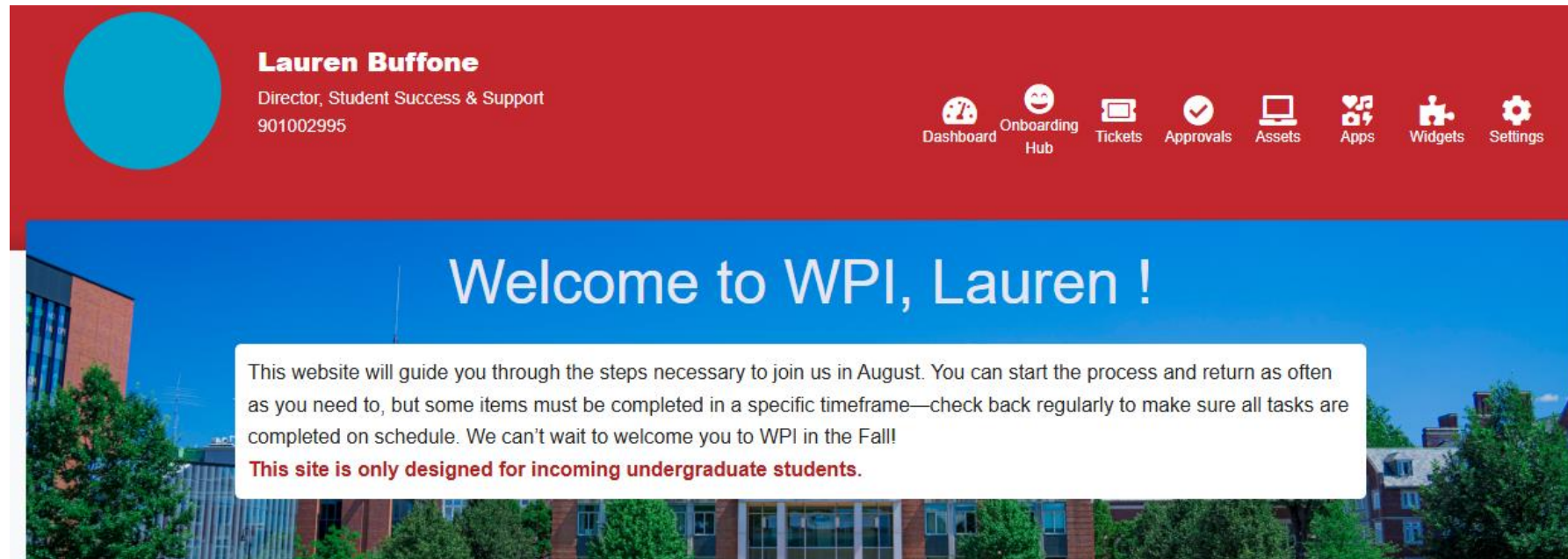
- [The WPI Hub | Spread | Third Party Proxy Checklist](#)

Students provide **third-party proxy users** access to:

- make a payment
- view account activity
- view student statement
- view current classes
- view student grades

Summer WPI due dates and tasks

- [The First-Year Experience | Worcester Polytechnic Institute](#)
 - Click “I am a... incoming first year student or transfer student”



Summer WPI due dates and tasks, continued

Onboarding Progress

15 **Required** Tasks Remaining



Support Network

According to our records, you are not a new student.
Your onboarding progress may not be tracked.

My Onboarding Tasks

FILTER TASKS BY CATEGORY

Get Connected

Academics

Financial

Health Services

Compliance

More Information

Housing & Dining

FILTER TASKS BY URGENCY

Due Date

All Tasks

Recommended

Parenting in a different stage of life

- Set up a time to talk weekly (or another cadence)
- Balance of letting them try and supporting them
- What you hear is likely not the full context
- Point your student to the resources on-campus
- Ask them open ended questions
 - Venting vs problem solving
- Transparency around communication to WPI and how it circles back
- Encourage them to be honest, even if it's not great news
- They are in control of change