

OpenSciEd Launch

Storyline Model of Teaching and Learning Science



WPI

STEM
Education
Center

Target Audience: Grades K-12 science educators, coaches and administrators

Note: This course is ideal for anyone looking to implement an OpenSciEd unit, but will also support those interested in exploring the storyline model in general, as well as other HQIM.

Course Description:

This course models and guides educators through the shift toward student-centered science teaching & learning, where students ‘figure out’ and explain a real-world phenomenon. Throughout the course, participants will experience the different routines & pedagogies associated with [OpenSciEd](#) and the storyline model of teaching science, as well as work with colleagues to review a grade-specific unit and plan for adaptation or implementation in their classrooms.

During the course, participants will:

1. Expand their knowledge about the shift in science education instruction: focusing on student-led science inquiry (the storyline)
2. Unpack the process of “figuring out” and how it aligns with Massachusetts STE framework (core ideas & practices)
3. Experience the different routines & pedagogies associated with the storyline model, as modeled by an experienced educator
4. Work with colleagues to review a subject or grade-specific OSE unit and plan for implementation in their classrooms

This course awards:

► **PDP Certificate, 18 PDP’s** – awarded upon completion of the 3-day course and submission of coursework

OR

► **Graduate Credit, 3 graduate credits** (in lieu of PDPs)– awarded upon completion of the 3-day course, follow-up sessions & submission of coursework



Course Information:

PDP Option 1	PDP Option 2
<ul style="list-style-type: none">• Day: Wednesday – Friday• Time: 8:30 am – 3:15 pm ET• Dates: Nov. 12-14, 2025• Format: Fully online via Zoom (collaborative & interactive)• Registration Fee: \$675• PDPs: 18	<ul style="list-style-type: none">• Day: Tuesday – Thursday• Time: 8:30 am – 3:15 pm ET• Dates: February 17-19, 2026• Format: Fully online via Zoom (collaborative & interactive)• Registration Fee: \$675• PDPs: 18
Note: An optional extension to 3-graduate credit course is available.	

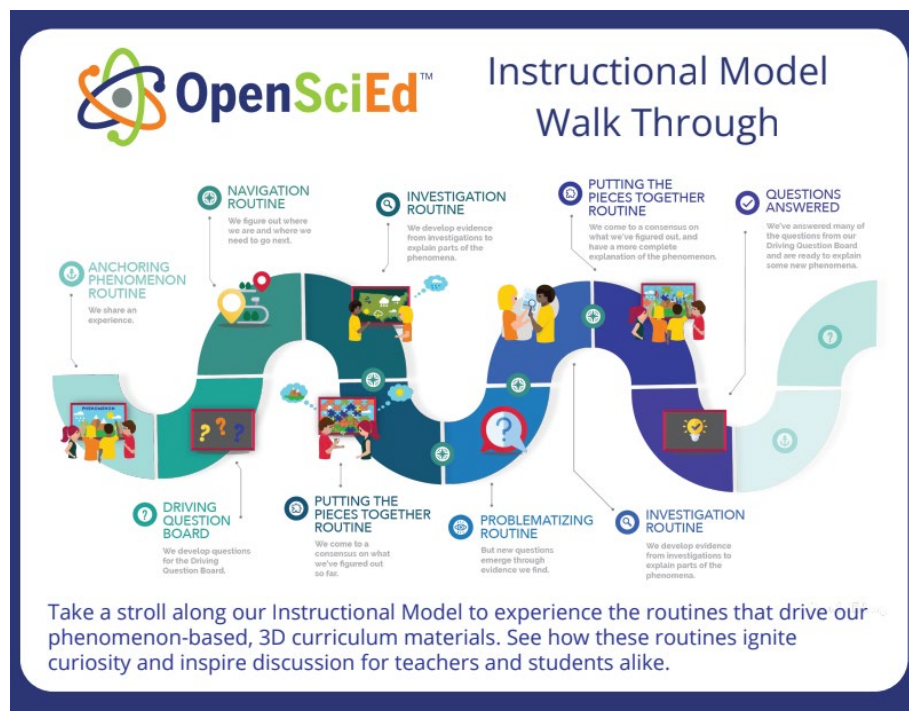
OpenSciEd Launch

Storyline Model of Teaching and Learning Science



WPI

STEM
Education
Center



Format, daily schedule & breaks:

The online PD is designed to be collaborative and interactive.

- *Morning sessions will run from ~8:30-12:00.* During most morning sessions **participants take the role of students** in exploring a phenomenon and storyline routines.
- *Afternoon sessions will run from ~12:45-3:15.* Afternoon sessions are intended for connecting with subject specific colleagues to review **your** chosen unit and identify the components we experienced in the morning session.

Each session will have at least one 10 min break; a 45-min lunch break is scheduled daily. We encourage participants to walk away from the computer during lunch break.

Visit our [website](#) to **REGISTER**.

For questions, contact Donna Taylor at dtaylor@wpi.edu