

# OpenSciEd Launch

## Storyline Model of Teaching and Learning Science



WPI

STEM  
Education  
Center

**Target Audience:** K-12 science educators, coaches and administrators

**Note:** This course is ideal for anyone looking to implement an OpenSciEd unit, but will also support those interested in exploring the storyline model in general, as well as other HQIM.

### Course Description:

This course models and guides educators through the shift toward student-centered science teaching & learning, where students 'figure out' and explain a real-world phenomena. Throughout the course, participants will experience the different routines & pedagogies associated with [OpenSciEd](#) and the storyline model of teaching science, as well as work with colleagues to review a grade-specific unit and plan for adaptation or implementation in their classrooms.

During the course, participants will:

1. Expand their knowledge about the shift in science education instruction: focusing on student-led science inquiry (the storyline)
2. Unpack the process of "figuring out" and how it aligns with Massachusetts STE framework (core ideas & practices)
3. Experience the different routines & pedagogies associated with the storyline model, as modeled by an experienced educator
4. Work with colleagues to review a subject or grade-specific OSE unit and plan for implementation in their classrooms

### This course awards:

► **PDP Certificate, 18 PDP's** – awarded upon completion of the 3-day course and submission of coursework

OR

► **Graduate Credit, 3 graduate credits** (in lieu of PDPs)– awarded upon completion of the 3-day course, follow-up sessions & submission of coursework



### Course Information:

PDP Option	Graduate Credit Extension*
<ul style="list-style-type: none"><li>• <b>Dates:</b> August 11-13, 2026</li><li>• <b>Time:</b> 8:45 am – 3:45 pm ET</li><li>• <b>Format:</b> Fully online via Zoom (<i>collaborative &amp; interactive</i>)</li><li>• <b>Final Project:</b> None</li><li>• <b>Registration Fee:</b> \$675</li><li>• <b>PDPs:</b> 18</li></ul>	<ul style="list-style-type: none"><li>• <b>Dates:</b> October 19-December 11 (total of 7 weeks)</li><li>• <b>Format:</b> Synchronous or a-synchronous (TBD)</li><li>• <b>Final Project:</b> Required and graded (including additional assignments)</li><li>• <b>Registration Fee:</b> \$840 (<i>includes a \$15 student fee</i>)</li><li>• <b>Graduate Credits:</b> 3</li></ul> <p><i>Important: Participants taking the course for graduate credit must complete the 4-day course in August in addition to the requirements above. Therefore, the total cost for the 3-credit graduate course is (\$675 + \$840) \$1515.</i></p>

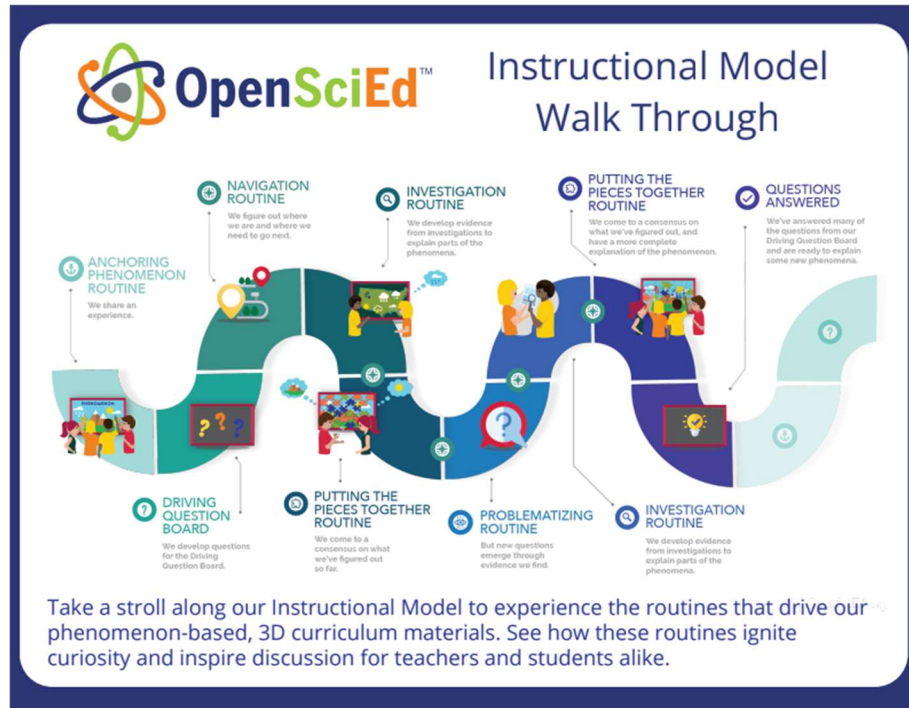
# OpenSciEd Launch

*Storyline Model of Teaching and Learning Science*



**WPI**

STEM  
Education  
Center



## Format, daily schedule & breaks:

The online PD is designed to be collaborative and interactive.

- *Morning sessions will run from ~8:45-12:15.* During most morning sessions **participants take the role of students** in exploring a phenomenon and storyline routines.
- *Afternoon sessions will run from ~1:00-3:30.* Afternoon sessions are intended for connecting with subject specific colleagues to review *\*your\** chosen unit and identify the components we experienced in the morning session.

Each session will have at least one 10 min break; a 45-min lunch break is scheduled daily. We encourage participants to walk away from the computer during lunch break.

Visit our [website](#) to **REGISTER**.

For questions, contact Donna Taylor at [dtaylor@wpi.edu](mailto:dtaylor@wpi.edu)