

T&I PARTNERS: DIVISION/DEPARTMENT SUPPORT AREAS (TIER 3)



Kristan Coffey

Director of Talent and Inclusion

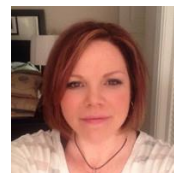
- **Academic Affairs**
 - Provost Office
 - Provost
 - Dean of Graduate Studies (Co-partner)
 - Associate VP (KS)
 - Assistant Vice President (RL)
 - Operations Manager (DG)
- **General Counsel**



Eric Chojnowski

Talent and Inclusion Partner

- **Finance & Operations**
 - Budget & Planning
 - Controllers Office
 - Procurement
- Marketing
- Advancement
- Admissions
- Financial Aid
- Institutional Research
- **Academic Affairs**
 - School of Business
 - Undergraduate Studies
 - IGSD
 - CPBL



Heather Mulry

Talent and Inclusion Partner

- **Student Affairs (All Areas)**
 - Dean of Students
 - Dining Services
 - International Faculty & Scholars
 - International Student Life
 - Career Development Center
 - Residential Services
 - Student Activities
 - Student Development & Counseling
 - Disability Services
 - Health Services
 - Campus Centre
 - Foisie Innovation Studio
- **Physical Education, Recreation & Athletics (PERA)**
- **Academic Affairs**
 - School of Engineering
 - Faculty Governance



James Estrella

Sr. Talent and Inclusion Partner

- **Academic Affairs**
 - Library Services
 - Registrar
 - Vice Provost Research
 - Dean of Graduate Studies (Co-partner)
 - School of Arts & Sciences
- **Finance & Operations**
 - Facilities & Planning
 - Campus Safety
 - Information Technology



WPI