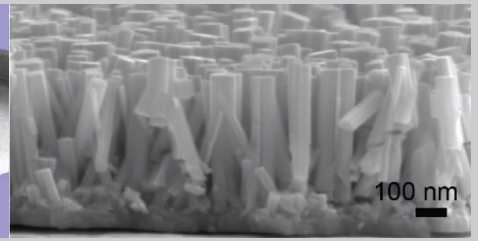
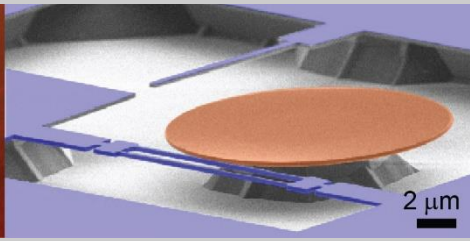
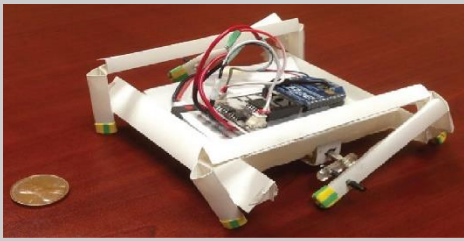




WPI

MECHANICAL ENGINEERING



WPI ME Graduate Seminar Series 2019-2020

Adventures in a Coffee Startup

David M. Dussault
Founder and Chief Science Officer
Elemental Beverage Company

10:00-10:50 am, Wednesday, February 5
Higgins Labs 218

There I was, a mechanical engineer, programming away on my computer, modeling thermal systems, and I can't get a good iced coffee. When I get a fresh cup of hot coffee, now that's something - that's what I want, but iced. How does that not exist, I thought to myself. It's a well-defined thermal problem. Well, I'm here to tell you I came up with a solution, using first principles, from my undergrad Thermodynamics, Fluid Mechanics, and Heat Transfer classes. Then I found a partner, started a company, made prototypes, patents, production equipment, developed a business plan, and started running a business. Our startup is in a great position. Come and try some coffee, see a demonstration, have some fun, and hopefully learn from my experiences. I'll leave plenty of time for questions and answers. Snapchill you later.

About the Speaker



Grew up in Medford, MA. Bachelors from UMass Lowell and Master's from MIT, both Mechanical Engineering. Specialized in modeling and simulation in fluid mechanics and heat transfer. Work experience includes government research at Aerodyne (Billerica, MA), airplane engines at GE (Lynn, MA), two startups focused on water distillation, Zanaqua and Aquaback, and now Snapchilled coffee at Elemental Beverage Company.