

2011 Fact Book



Undergraduate & Graduate Student Enrollment Information
October 1, 2011

Prepared by the Division of Enrollment Management

CONTENTS

GENERAL INFORMATION.....	1
ENROLLMENT PROFILE, FALL 2011: DEGREE-SEEKING HEADCOUNTS BY GENDER	2
ENROLLMENT PROFILE, FALL 2011: HEADCOUNT & FULL-TIME EQUIVALENT BY STUDENT TYPE.....	3
DOMESTIC DEGREE-SEEKING STUDENTS BY STATE, FALL 2011	4
INTERNATIONAL (NON-CITIZEN) DEGREE-SEEKING STUDENTS BY NATION, FALL 2011.....	5
FIRST-TIME, FULL-TIME FRESHMEN	7
UNDERGRADUATE ADMISSIONS DATA, FALL 2005 TO FALL 2011	8
<i>Undergraduate Admissions Data, Fall 2005 to Fall 2011</i>	9
FIRST-TIME, FULL-TIME ¹ FRESHMEN BY RACE/ETHNICITY & GENDER, FALL 2011	10
<i>First-Time, Full-Time Freshman Race/Ethnicity, Fall 2011</i>	11
FIRST-TIME, FULL-TIME FRESHMEN BY DEPARTMENT & MAJOR, FALL 2011	12
<i>First-Time, Full-Time Freshman Enrollment by Department, Fall 2010 & Fall 2011</i>	13
UNDERGRADUATES	14
FULL-TIME ¹ UNDERGRADUATE ENROLLMENT BY RACE/ETHNICITY & GENDER, FALL 2011	15
<i>Full-Time Undergraduates by Race/Ethnicity, Fall 2011</i>	16
<i>Full-Time Undergraduates, 2006 to 2011: Women & Underrepresented Minorities</i>	17
FULL-TIME UNDERGRADUATE ENROLLMENT BY MAJOR & CLASS ¹ , FALL 2011	18
DECLARED SECOND MAJORS OF UNDERGRADUATES, FALL 2011	19
FULL-TIME ¹ UNDERGRADUATE STUDENTS: RACE/ETHNICITY & GENDER BY MAJOR, FALL 2011.....	20
FULL-TIME UNDERGRADUATE ENROLLMENT BY MAJOR, FALL 2007 TO FALL 2011	22
TRANSFER ADMISSIONS DATA, FALL 2007 TO FALL 2011	23
PREVIOUS COLLEGES OF TRANSFER STUDENTS.....	23
TRANSFERS BY DEPARTMENT & MAJOR, FALL 2011	24
UNDERGRADUATE RETENTION RATES FOR CLASS COHORTS	25
<i>Freshman to Sophomore Retention Rates, 2004 to 2011</i>	25
UNDERGRADUATE GRADUATION RATES FOR CLASS COHORTS	26
<i>Undergraduate Graduation Rates, Classes of 2007 to 2011</i>	26
UNDERGRADUATE COMPLETIONS ¹ : DEPARTMENT & MAJOR BY ACADEMIC YEAR, 2007 TO 2011.....	27

GRADUATE.....28

FULL- & PART-TIME¹ DEGREE-SEEKING GRADUATE ENROLLMENT BY RACE/ETHNICITY & GENDER, FALL 2011.....29

Full- & Part-Time Degree-Seeking Graduate Students by Race/Ethnicity, Fall 201130

Full- & Part-Time Degree-Seeking Graduate Students 2006 to 2011: Women & Underrepresented Minorities31

FULL- & PART-TIME DEGREE-SEEKING GRADUATE ENROLLMENT BY DEPARTMENT & MAJOR, FALL 201132

FULL-TIME¹ GRADUATE STUDENTS: RACE/ETHNICITY & GENDER BY MAJOR, FALL 201033

PART-TIME¹ GRADUATE STUDENTS: RACE/ETHNICITY & GENDER BY MAJOR, FALL 201135

FULL- & PART-TIME DEGREE-SEEKING GRADUATE ENROLLMENT BY MAJOR, FALL 2007 TO FALL 201137

GRADUATE COMPLETIONS: DEPARTMENT & MAJOR BY ACADEMIC YEAR, 2005 TO 201138

FALL 2011: GENERAL INFORMATION

Enrollment Profile, Fall 2011: Degree-Seeking Headcounts by Gender

Enrollment Profile: Undergraduates							
	Full-Time ¹		Part-Time ²		Total		Grand Total
	Women	Men	Women	Men	Women	Men	
BS	1,132	2,489	24	94	1,156	2,583	3,739
BA	2	4	0	1	2	5	7
Total	1,134	2,493	24	95	1,158	2,588	3,746
% of Category	31.3%	68.7%	20.2%	79.8%			
% of Total	30.3%	66.6%	0.6%	2.5%	30.9%	69.1%	100%

Enrollment Profile: Graduate Students							
	Full-Time ¹		Part-Time ²		Total		Grand Total
	Women	Men	Women	Men	Women	Men	
MS	134	271	133	516	267	787	1,054
MBA	10	17	31	112	41	129	170
MENGR	3	11	1	10	4	21	25
MME	0	0	10	2	10	2	12
PHD	60	107	18	56	78	163	241
Grad. Certificates	0	0	14	41	14	41	55
Total	207	406	207	737	414	1,143	1,557
% of Category	33.8%	66.2%	21.9%	78.1%			
% of Total	13.3%	26.1%	13.3%	47.3%	26.6%	73.4%	100%

¹ Full-Time Undergraduates >=12 credits; Full-Time Graduate >= 9 credits [IPEDS Glossary, pg. 29]

² Part-Time Undergraduates < 12 credits; Part-Time Graduate < 9 credits [IPEDS Glossary, pg. 29]

Enrollment Profile, Fall 2011: Headcount & Full-Time Equivalent by Student Type

Headcounts

IPEDS FTE¹

Degree-Seeking Headcounts				Degree-Seeking FTE			
	Full-Time ²	Part-Time ³	Total		Full-Time	Part-Time	Total
Undergraduate	3,627	119	3,746	Undergraduate	3,627	47	3,674
Graduate	613	889	1,502	Graduate	613	340	953
Grad. Certificate	0	55	55	Grad. Certificate	0	21	21
Total	4,240	1,063	5,303	Total	4,240	408	4,648

Non-Degree-Seeking Headcounts				Non-Degree-Seeking FTE			
	Full-Time	Part-Time	Total		Full-Time	Part-Time	Total
Undergraduate	54	49	103	Undergraduate	54	19	73
Graduate	2	370	372	Graduate	2	141	143
Total	56	419	475	Total	56	160	216

Total Headcounts				Total FTE			
	Full-Time	Part-Time	Total		Full-Time	Part-Time	Total
Undergraduate	3,681	168	3,849	Undergraduate	3,681	66	3,747
Graduate	615	1,259	1,874	Graduate	615	481	1,096
Grad. Certificate	0	55	55	Grad. Certificate	0	21	21
Total	4,296	1,482	5,778	Total	4,296	568	4,864

¹ The Department of Education, Integrated Postsecondary Education Data System (IPEDS) defines FTE's by headcount as follows:

UG = FT + (0.392857)*PT; GR = FT + (0.382059)*PT [IPEDS Glossary, pg. 10]

² Full-Time Undergraduates >=12 credits; Full-Time Graduate >= 9 credits [IPEDS Glossary, pg. 29]

³ Part-Time Undergraduates < 12 credits; Part-Time Graduate < 9 credits [IPEDS Glossary, pg. 29]

Domestic Degree-Seeking Students by State, Fall 2011

State	Undergraduate		Graduate	
	Full-Time	Part-Time	Full-Time	Part-Time
AE	3	0	0	0
AK	3	0	0	1
AL	3	0	0	1
AP	1	0	0	0
AR	1	0	0	0
AZ	1	1	0	0
CA	74	2	2	4
CO	13	0	0	3
CT	331	7	11	144
DC	5	0	1	0
DE	3	0	0	0
FL	32	2	1	4
GA	8	0	2	4
GU	0	0	0	1
HI	4	0	1	0
ID	2	0	0	0
IL	8	0	2	3
IN	0	0	1	0
KS	6	0	0	0
KY	1	0	0	0
MA	1,494	61	109	406
MD	22	0	0	4
ME	132	3	8	21
MI	3	0	0	1
MN	11	0	2	1
MO	3	0	0	1
MT	1	0	0	1
NC	6	0	2	3
ND	0	0	0	1
NE	3	0	0	1
NH	258	10	22	64
NJ	121	0	3	10
NM	3	0	0	0
NV	3	0	0	2
NY	268	10	17	20
OH	8	0	1	1
OK	1	0	0	0
OR	11	0	1	0
PA	53	0	7	4
PR	7	0	1	0
RI	146	4	15	49
SC	2	0	0	1
SD	0	0	0	1
TN	3	0	2	1
TX	34	2	0	5
UT	3	0	0	1
VA	27	0	2	1
VI	1	0	0	0
VT	38	3	0	5
WA	21	0	1	2
WI	5	0	0	0
WV	2	0	0	0

International (Non-Citizen) Degree-Seeking Students by Nation, Fall 2011

	Undergraduate		Graduate	
Nation	Full-time	Part-time	Full-Time	Part-Time
AFGHANISTAN	1			
ALBANIA	1			
ALGERIA				1
AUSTRALIA				1
AZERBAIJAN	1			
BANGLADESH	3			1
BELGIUM	1			
BOLIVIA	1			
BOSNIA AND HERZEGOVINA	2			
BRAZIL	5		4	3
BULGARIA	6		1	1
BURMA	1			
CAMBODIA				1
CANADA	1		1	2
CAPE VERDE	1			
CHINA	153	3	289	78
COLOMBIA	4		3	
COSTA RICA			1	
CYPRUS	3			
DOMINICAN REPUBLIC	1		1	
ECUADOR	10			1
EGYPT	1		1	1
EL SALVADOR	3			
ETHIOPIA	1			
FRANCE	2		4	1
GEORGIA	2			
GERMANY			1	
GHANA	1			1
GREECE	5			1
GUATEMALA	1			1
HONDURAS	5			
INDIA	22	1	31	34
INDONESIA	1			
IRAN	1		9	3
IRAQ	1			
ISRAEL	1			
ITALY	1		1	
JAMAICA	16	1		
JAPAN	2		1	
JORDAN	1			
KAZAKHSTAN	4	1		
KENYA	2			
KOREA, REPUBLIC OF	9		3	2

International (Non-Citizen) Degree-Seeking Students by Nation, Fall 2011 (cont.)

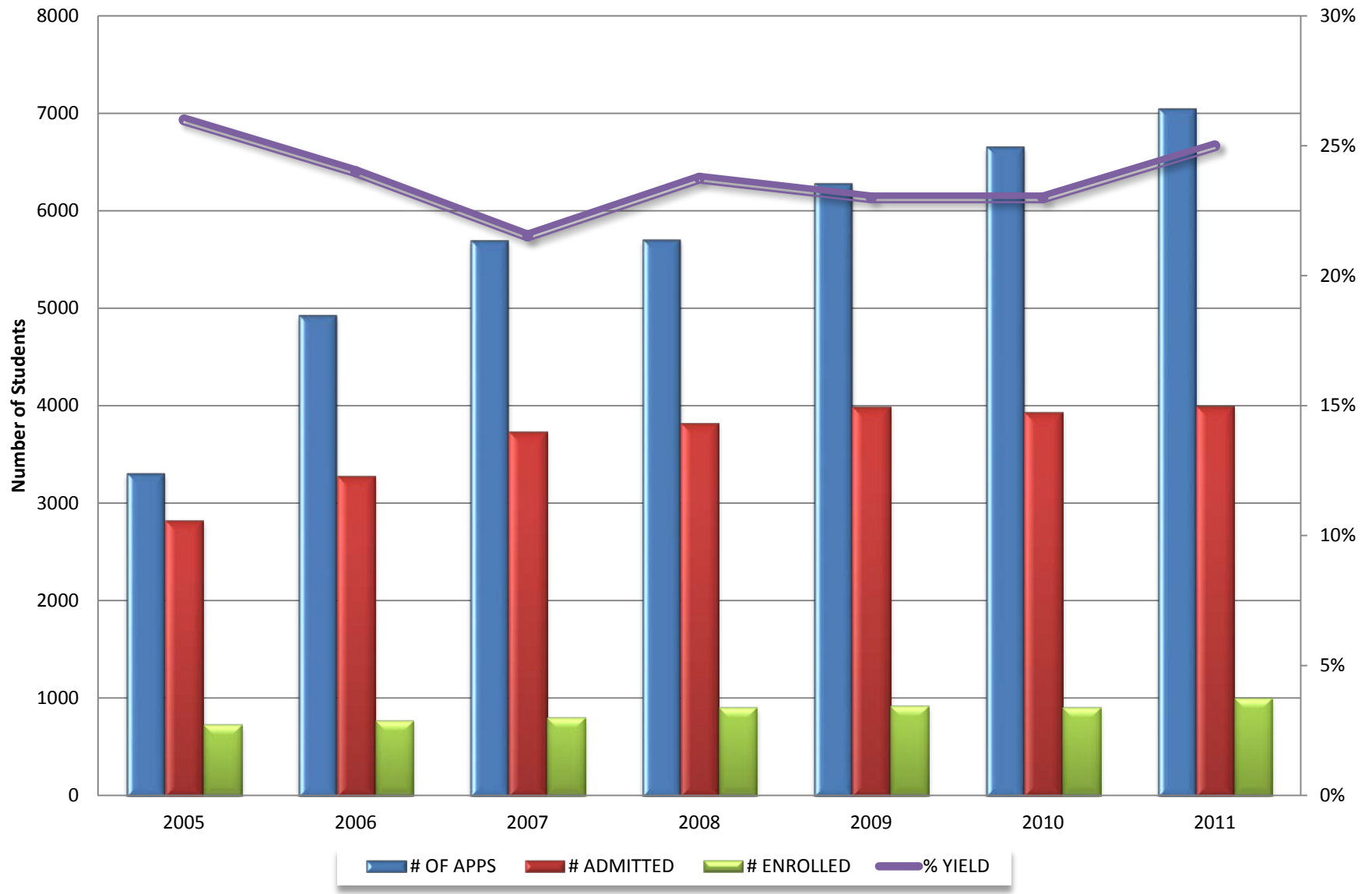
	Undergraduate		Graduate	
Nation	Full-time	Part-time	Full-Time	Part-Time
KYRGYZSTAN	1			
LATVIA			1	
LEBANON			1	
LIBYAN ARAB JAMAHIRIYA				1
MACEDONIA			1	
MAURITIUS	4			
MEXICO			2	4
MOROCCO	2			
MYANMAR	19			
NEPAL	3		3	1
NIGERIA	2			1
NORWAY	1		3	
PAKISTAN	4		2	2
PANAMA	6			
PERU	2			1
PHILIPPINES	2		1	
POLAND	1			1
ROMANIA	3		2	
RUSSIAN FEDERATION			4	
SAUDI ARABIA	10		4	1
SENEGAL				1
SERBIA	1			
SERBIA-MONTENEGRO			1	
SIERRA LEONE				1
SINGAPORE	1			
SPAIN			1	
SRI LANKA	2	1		
TAIWAN (R.O.C.)	1		3	3
THAILAND	19			1
TRINIDAD AND TOBAGO			1	
TURKEY	14	1	8	1
UGANDA	1			
UKRAINE	1		1	
UNITED ARAB EMIRATES	1			
UNITED KINGDOM	2			1
VENEZUELA	12		1	
VIETNAM	22		1	

FALL 2011: FIRST-TIME, FULL-TIME FRESHMEN

Undergraduate Admissions Data, Fall 2005 to Fall 2011

						Enrolling Students			
	# of Apps	# Admitted	% Admitted	# Enrolled	% Yield	Median SAT (V+M)	Median SAT (CR+M+W)	Median Class Rank	Percentile Rank
2005	3,315	2,822	85%	733	26%	1280	-	14%	86%
2006	4,931	3,283	67%	776	24%	1290	1880	10%	90%
2007	5,698	3,739	66%	805	22%	1290	1890	11%	89%
2008	5,706	3,803	67%	907	24%	1270	1870	10%	90%
2009	6,284	3,989	63%	925	23%	1280	1890	9%	91%
2010	6,660	3,933	59%	910	23%	1280	1890	8%	92%
2011	7,049	3,998	57%	1,005	25%	1290	1900	6%	94%

Undergraduate Admissions Data, Fall 2005 to Fall 2011



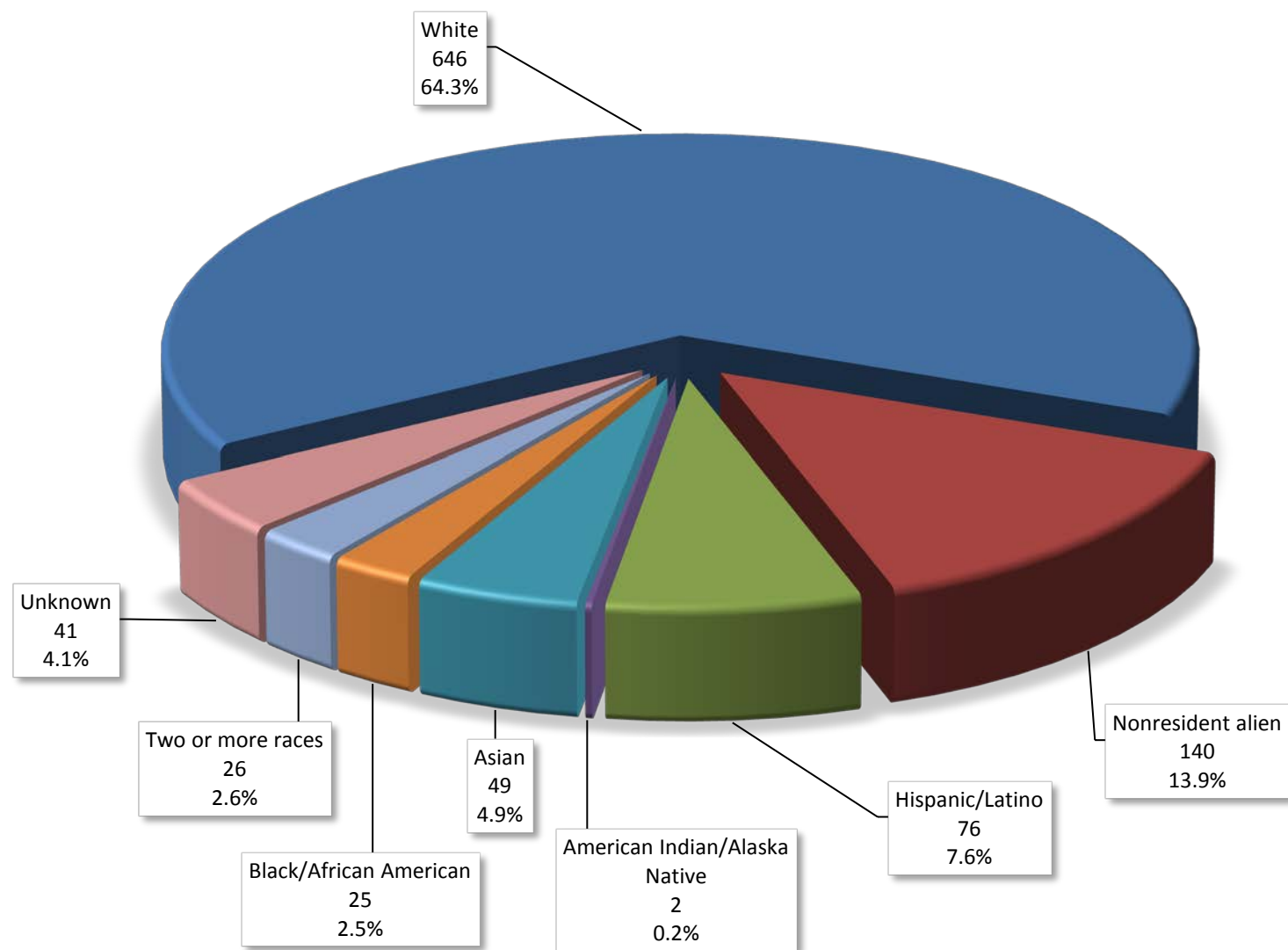
First-Time, Full-Time¹ Freshmen by Race/Ethnicity & Gender, Fall 2011

Headcount			
	Gender		
Race/Ethnicity	Female	Male	Total
Nonresident alien	45	95	140
Hispanic/Latino	25	51	76
American Indian/Alaska Native	1	1	2
Asian	17	32	49
Black/African American	8	17	25
Native Hawaiian/Other Pacific Islander	0	0	0
White	188	458	646
Two or more races	7	19	26
Race/ethnicity unknown	14	27	41
Total	305	700	1,005
% of Total	30.3%	69.7%	100%

Percent			
	Gender		
Race/Ethnicity	Female	Male	Total
Nonresident alien	14.8%	13.6%	13.9%
Hispanic/Latino	8.2%	7.3%	7.6%
American Indian/Alaska Native	0.3%	0.1%	0.2%
Asian	5.6%	4.6%	4.9%
Black/African American	2.6%	2.4%	2.5%
Native Hawaiian/Other Pacific Islander	0%	0%	0%
White	61.6%	65.4%	64.3%
Two or more races	2.3%	2.7%	2.6%
Race/ethnicity unknown	4.6%	3.9%	4.1%
Total	100%	100%	100%

¹ Full-Time Undergraduates >=12 credits [IPEDS Glossary, pg. 29]

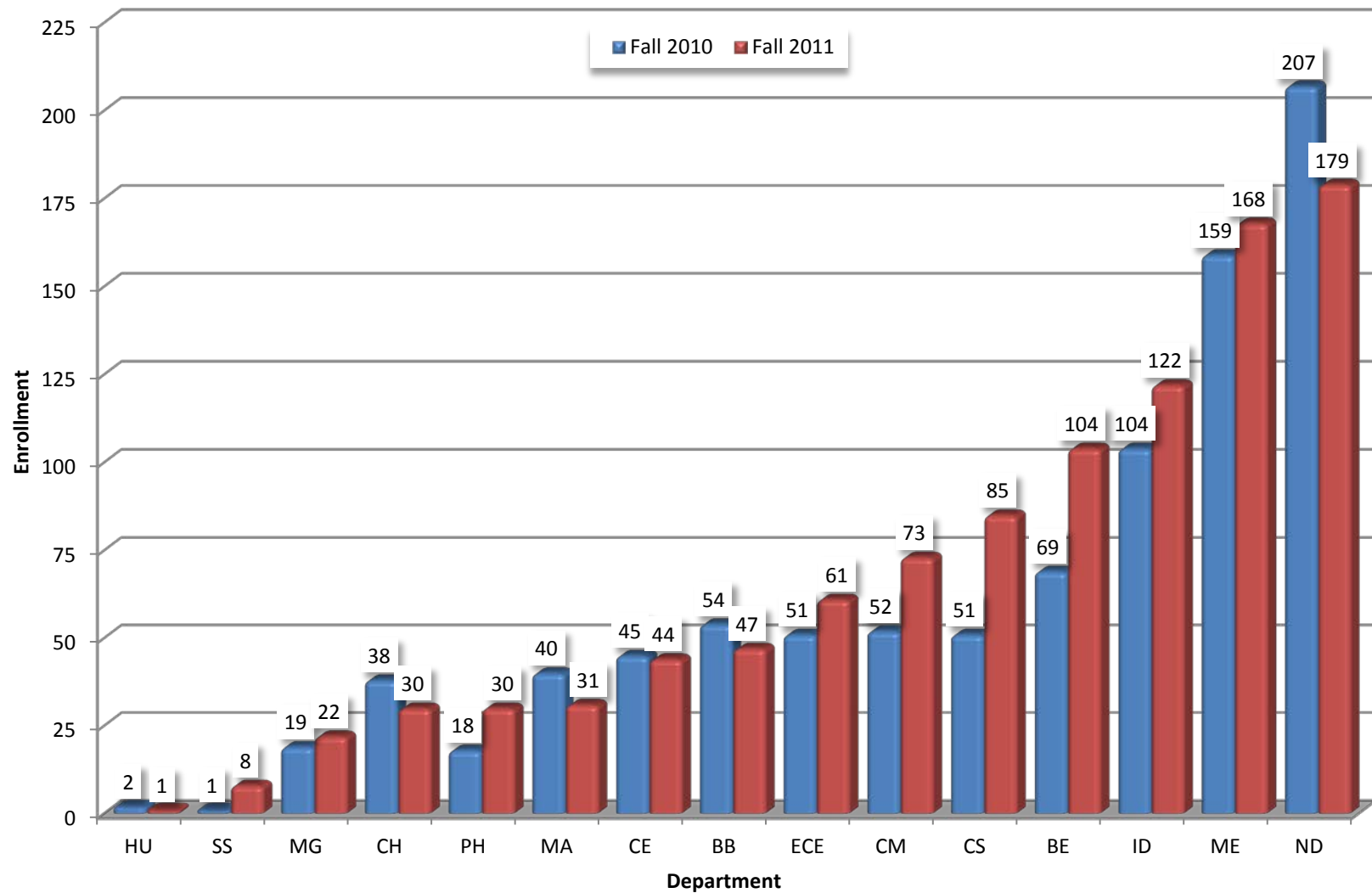
First-Time, Full-Time Freshman Race/Ethnicity, Fall 2011



First-Time, Full-Time Freshmen by Department & Major, Fall 2011

Department & Major	TOTAL
Biology/ Biotechnology	47
Biomedical Engineering	104
Chemical Engineering	73
Chemistry and Biochemistry	30
Biochemistry	12
Chemistry	18
Civil & Environmental Engr	44
Computer Science	85
Computer Science	83
Computers with Applications	2
Electrical & Computer Engr	61
Humanities and Arts	1
Interdisciplinary Programs	122
Environmental Engineering	22
Interactive Media & Game Dev	44
Liberal Arts & Engineering	1
Robotics Engineering	55
Management	22
Industrial Engineering	8
Management	10
Management Engineering	4
Mathematical Sciences	31
Actuarial Mathematics	11
Mathematical Sciences	20
Mechanical Engineering	168
Aerospace Engineering	53
Mechanical Engineering	115
Non-Department	179
Engineering - To Be Declared	145
Science (Freshmen Only)	5
To Be Declared	29
Physics	30
Social Science/Policy Studies	8
Economic Science	5
Environ & Sustain Studies	2
Psychological Science	1
Grand Total	1,005

First-Time, Full-Time Freshman Enrollment by Department, Fall 2010 & Fall 2011



FALL 2011: UNDERGRADUATES

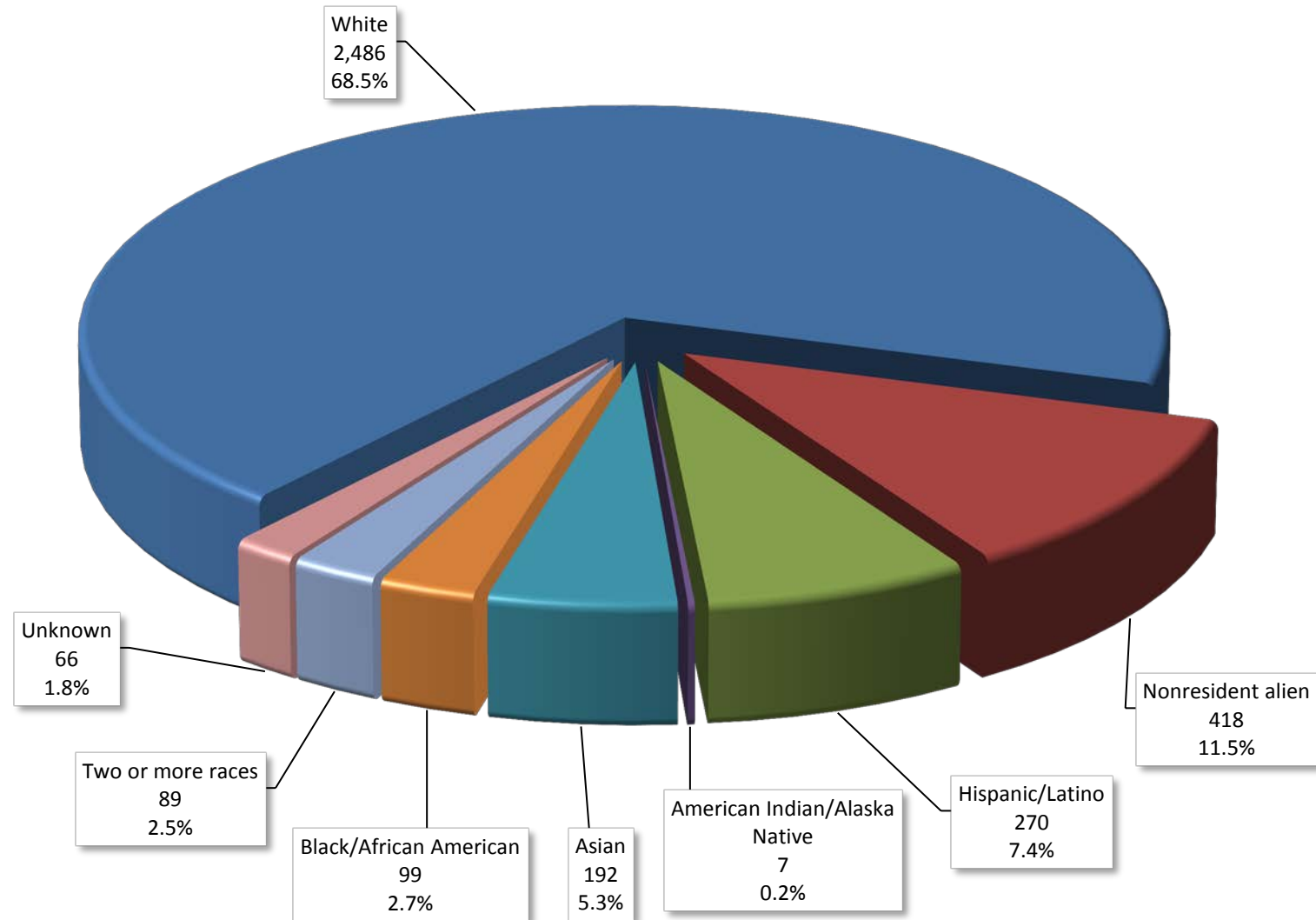
Full-Time¹ Undergraduate Enrollment by Race/Ethnicity & Gender, Fall 2011

Headcount			
	Gender		
Race/Ethnicity	Female	Male	Total
Nonresident alien	146	272	418
Hispanic/Latino	83	187	270
American Indian/Alaska Native	4	3	7
Asian	64	128	192
Black/African American	24	75	99
Native Hawaiian/Other Pacific Islander	0	0	0
White	761	1,725	2,486
Two or more races	27	62	89
Race/ethnicity unknown	25	41	66
Total	1,134	2,493	3,627
% of Total	31.3%	68.7%	100%

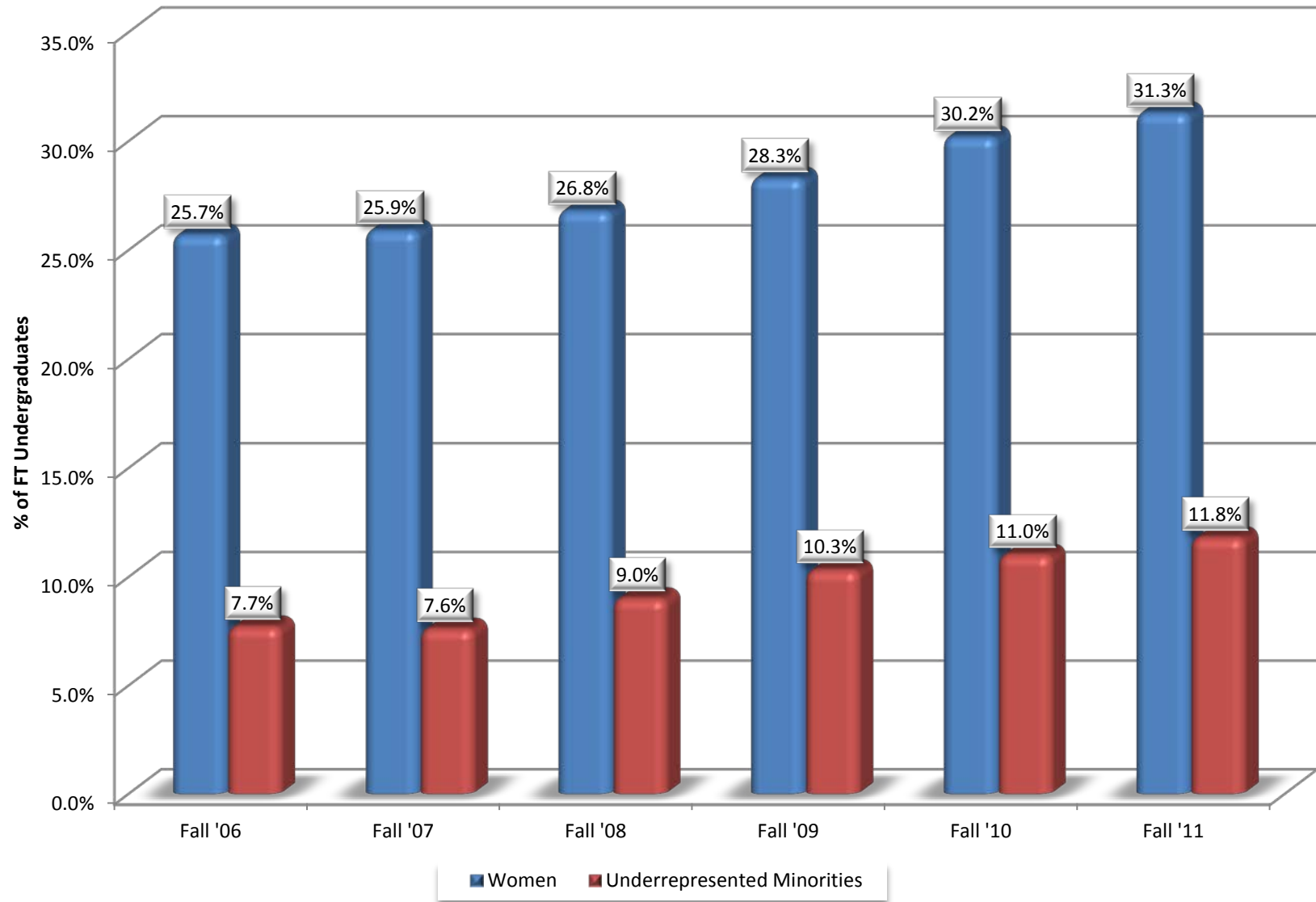
Percent			
	Gender		
Race/Ethnicity	Female	Male	Total
Nonresident alien	12.9%	10.9%	11.5%
Hispanic/Latino	7.3%	7.5%	7.4%
American Indian/Alaska Native	0.4%	0.1%	0.2%
Asian	5.6%	5.1%	5.3%
Black/African American	2.1%	3.0%	2.7%
Native Hawaiian/Other Pacific Islander	0%	0%	0%
White	67.1%	69.2%	68.5%
Two or more races	2.4%	2.5%	2.5%
Race/ethnicity unknown	2.2%	1.6%	1.8%
Total	100%	100%	100%

¹ Full-Time Undergraduates >=12 credits [IPEDS Glossary, pg. 29]

Full-Time Undergraduates by Race/Ethnicity, Fall 2011



Full-Time Undergraduates, 2006 to 2011: Women & Underrepresented Minorities



Full-Time Undergraduate Enrollment by Major & Class¹, Fall 2011

Department & Major	Freshmen	Sophomores	Juniors	Seniors	Total
Biology/ Biotechnology	45	49	57	54	205
Biomedical Engineering	98	109	80	88	375
Chemical Engineering	69	55	59	87	270
Chemistry and Biochemistry	27	29	32	41	129
Biochemistry	10	19	16	22	67
Chemistry	17	10	16	19	62
Civil & Environmental Engr	45	54	54	82	235
Computer Science	84	49	50	73	256
Computer Science	82	49	50	73	254
Computers with Applications	2				2
Electrical & Computer Engr	61	96	64	98	319
Humanities and Arts	2	1		2	5
Interdisciplinary Programs	118	106	92	104	420
Bioinformatics & Computat Bio		1	1		2
Environmental Engineering	22	21	19	12	74
Interactive Media & Game Dev	43	30	29	35	137
Interdisciplinary			1	2	3
International Studies		1	2		3
Liberal Arts & Engineering	1			1	2
Robotics Engineering	52	53	40	54	199
Management	25	41	51	56	173
Industrial Engineering	8	15	11	9	43
Management	12	5	8	6	31
Management Engineering	5	18	20	35	78
Management Information Systems		3	12	6	21
Mathematical Sciences	29	38	34	43	144
Actuarial Mathematics	11	21	17	19	68
Mathematical Sciences	18	17	17	24	76
Mechanical Engineering	166	192	196	225	779
Aerospace Engineering	49	39	45	52	185
Mechanical Engineering	117	153	151	173	594
Non-Department	174	28	15	2	219
Engineering - To Be Declared	141	11	13	2	167
Science (Freshmen Only)	5				5
To Be Declared	28	17	2		47
Physics	27	16	9	25	77
Engineering Physics		4	1	1	6
Physics	27	12	8	24	71
Social Science/Policy Studies	8	3	7	3	21
Economic Science	5				5
Environ & Sustain Studies	2		3	2	7
Psychological Science	1	3	4	1	9
Total	978	866	800	983	3,627

¹ Standing as determined by accumulated credits

Declared Second Majors of Undergraduates, Fall 2011

Department & Major	
Biology/Biotechnology	14
Biomedical Engineering	7
Chemical Engineering	3
Chemistry and Biochemistry	20
Biochemistry	16
Chemistry	4
Civil & Environmental Eng	4
Computer Science	54
Electrical & Computer Eng	30
Fire Protection Engineering	1
Humanities and Arts	24
Humanities and Arts	18
Professional Writing	6
Interdisciplinary Programs	59
Environmental Engineering	4
Interactive Media & Game Dev	31
Interdisciplinary	1
Liberal Arts & Engineering	1
Robotics Engineering	22
Management	14
Industrial Engineering	1
Management	7
Management Engineering	4
Management Information Systems	2
Mathematical Sciences	26
Mechanical Engineering	38
Aerospace Engineering	2
Mechanical Engineering	36
Physics	13
Engineering Physics	1
Physics	12
Social Science/Policy Studies	19
Economic Science	3
Environ & Sustain Studies	9
Psychological Sciences	3
Society, Technology & Policy	4
Total	326

Full-Time¹ Undergraduate Students: Race/Ethnicity & Gender by Major, Fall 2011

	Headcounts																				
	Female										Male										
Department & Major	Nonresident alien	Hispanic/Latino	Amer. Indian/Alaska Native	Asian	Black/African American	Nat. Hawaiian/Pac. Islander	White	Two or more races	Race/ethnicity unknown	Total Women	Nonresident alien	Hispanic/Latino	Amer. Indian/Alaska Native	Asian	Black/African American	Nat. Hawaiian/Pac. Islander	White	Two or more races	Race/ethnicity unknown	Total Men	Grand Totals
Biology/Biotechnology	13	13		9	3		100	4	1	143	4	3		1	4		44	4	2	62	205
Biomedical Engineering	7	16	1	13	2		164	2	5	210	18	16		11	7		107	5	1	165	375
Chemical Engineering	13	8		6	1		78	3	4	113	16	12		11	2		111	1	4	157	270
Chemistry and Biochemistry	5	3		6	1		54		1	70	5	2		3			46	3		59	129
Biochemistry	2	1		5	1		34			43	1	1		3			16	3		24	67
Chemistry	3	2		1			20		1	27	4	1					30			35	62
Civil & Environmental Eng	8	4		4	2		41	1	3	63	18	15		4	8		120	4	3	172	235
Computer Science	9	1			1		14	4	1	30	22	13	1	11	7		163	3	6	226	256
Computer Science	9	1			1		14	4	1	30	22	13	1	11	7		162	3	5	224	254
Computers with Applications																	1		1	2	2
Electrical & Computer Eng	17	4		4	4		32	1		62	41	17		29	9		150	9	2	257	319
Humanities and Arts	1						2			3		1						1		2	5
Interdisciplinary Programs	8	4		5	1		63	3	1	85	17	19	1	11	11		257	14	5	335	420
Bioinformatics & Computat Bio																	2			2	2
Environmental Engineering	6	2					29	2	1	40	2	1		2	1		26	1	1	34	74
Interactive Media & Game Dev	2			3	1		15			21	6	8	1	4	4		87	6		116	137
Interdisciplinary							1			1							2			2	3
International Studies							1			1							1	1		2	3
Liberal Arts & Engineering																	2			2	2
Robotics Engineering		2		2			17	1		22	9	10		5	6		137	6	4	177	199
Management	15	3		4	4		32	1	2	61	19	14		4	8		66	1		112	173
Industrial Engineering	6			1			12		1	20	12	4					6	1		23	43
Management	2			2	1		4			9	1	4			3		14			22	31
Management Engineering	5	3		1	2		14	1	1	27	3	5		2	4		37			51	78
Management Info Systems	2				1		2			5	3	1		2	1		9			16	21

¹ Full-Time Undergraduates >=12 credits [IPEDS Glossary, pg. 29]

Full-Time¹ Undergraduate Students: Race/Ethnicity & Gender by Major, Fall 2011 (cont.)

Department & Major	Headcounts																				
	Female										Male										Grand Totals
	Nonresident alien	Hispanic/Latino	Amer. Indian/Alaska Native	Asian	Black/African American	Nat. Hawaiian/Pac. Islander	White	Two or more races	Race/ethnicity unknown	Total Women	Nonresident alien	Hispanic/Latino	Amer. Indian/Alaska Native	Asian	Black/African American	Nat. Hawaiian/Pac. Islander	White	Two or more races	Race/ethnicity unknown	Total Men	
Mathematical Sciences	23	1		2	1		31	1	2	61	30	3		3	2		44		1	83	144
Actuarial Mathematics	10			2			20			32	13	1		1	2		18		1	36	68
Mathematical Sciences	13	1			1		11	1	2	29	17	2		2			26			47	76
Mechanical Engineering	11	17	2	7	2		104	5	5	153	54	55	1	36	13		444	13	10	626	779
Aerospace Engineering	1	7	1	1	1		26	2	1	40	11	19		7	4		96	3	5	145	185
Mechanical Engineering	10	10	1	6	1		78	3	4	113	43	36	1	29	9		348	10	5	481	594
Non-Department	9	8		4			33	2		56	14	11		3	1		130	1	3	163	219
Engineering - To Be Declared	7	2					23	1		33	11	8		2	1		108	1	3	134	167
Science (Freshmen Only)		1					2			3							2			2	5
To Be Declared	2	5		4			8	1		20	3	3		1			20			27	47
Physics	4		1				8			13	11	6			3		38	2	4	64	77
Engineering Physics							2			2	1	1			1		1			4	6
Physics	4		1				6			11	10	5			2		37	2	4	60	71
Social Science/Policy Studies	3	1			2		5			11	3			1			5	1		10	21
Economic Science	1						1			2	2						1			3	5
Environ & Sustain Studies	1	1					2			4							2	1		3	7
Psychological Science	1				2		2			5	1			1			2			4	9
Total	146	83	4	64	24	0	761	27	25	1,134	272	187	3	128	75		1,725	62	41	2,493	3,627

¹ Full-Time Undergraduates >=12 credits [IPEDS Glossary, pg. 29]

Full-Time Undergraduate Enrollment by Major, Fall 2007 to Fall 2011

Department & Major	2007	2008	2009	2010	2011
Biology/Biotechnology	221	236	270	223	205
Biomedical Engineering	182	185	229	300	375
Chemical Engineering	179	211	241	249	270
Chemistry and Biochemistry	142	133	128	132	129
Biochemistry	87	80	71	74	67
Chemistry	55	53	57	58	62
Civil & Environmental Eng	222	215	238	227	235
Computer Science	253	246	257	216	256
Computer Science	253	246	257	215	254
Computers with Applications	-	-	-	1	2
Electrical & Computer Eng	317	303	282	274	319
Humanities and Arts	7	14	9	6	5
Humanities and Arts	5	10	8	6	5
Professional Writing	2	4	1	0	0
Interdisciplinary Programs	176	256	311	406	420
Bioinformatics & Computat Bio	-	-	-	-	2
Environmental Engineering	17	28	34	55	74
Interactive Media & Game Dev	134	124	123	144	137
Interdisciplinary	0	2	1	2	3
International Studies	4	1	1	0	3
Liberal Arts & Engineering	-	-	2	1	2
Robotics Engineering	19	100	150	204	199
Tech, Sci & Prof Communication	2	1	-	-	-
Management	132	161	181	167	173
Industrial Engineering	33	35	44	39	43
Management	26	40	42	28	31
Management Engineering	43	53	66	75	78
Management Information Systems	30	33	29	25	21
Mathematical Sciences	99	113	133	152	144
Actuarial Mathematics	44	49	64	65	68
Mathematical Sciences	55	64	69	87	76
Mechanical Engineering	702	660	692	719	779
Aerospace Engineering	100	121	125	164	185
Manufacturing Engineering	11	7	2	2	-
Mechanical Engineering	591	532	565	553	594
Non-Department	235	255	212	270	219
Engineering - To Be Declared	164	185	171	197	167
Science (Freshmen Only)	8	9	3	5	5
To Be Declared	63	59	33	57	47
Physics	83	64	72	65	77
Engineering Physics	0	1	3	5	6
Physics	83	63	69	60	71
Social Science/Policy Studies	31	23	18	10	21
Economic Science	9	6	5	1	5
Economics & Technology	2	1	-	-	-
Environ & Sustain Studies ¹	-	2	5	11	7
Environmental Policy & Development	4	3	1	-	-
Psychological Science	6	2	6	6	9
Society, Technology & Policy	5	6	6	3	0
System Dynamics	5	5	0	0	0
Total	2,981	3,075	3,273	3,416	3,627

¹ Prior to Fall 2011, Environmental & Sustainability Studies was counted in Non-Department totals.

Transfer Admissions Data, Fall 2007 to Fall 2011

	# of Apps	# Admitted	% Admitted	# Enrolled	% Yield
2007	158	78	49%	47	60%
2008	168	74	44%	32	43%
2009	189	75	40%	31	41%
2010	199	82	41%	37	45%
2011	210	65	31%	41	63%

Previous Colleges of Transfer Students

Fall 2010			Fall 2011	
Assumption College	1		Amer. Musical Dramatic Acad	1
Boston University	1		Bristol CC	1
Bunker Hill CC	1		Bunker Hill CC	1
Calif St Poly Univ Pomona	1		Colby College	1
Daniel Webster College	1		Gordon College Ma	1
Dutchess CC	1		Indian River State College	1
Fairfield University	1		Keene State College	1
Fitchburg St College	1		Middlesex CC	1
Goucher College	1		North Shore CC	1
Manchester Cmty-Tech Coll	1		Quinnipiac University	1
Mass Bay CC	2		Quinsigamond CC	16
Massasoit CC	2		Saint Michaels College	1
Mercer County CC	1		St Anselm College	1
Montgomery Coll Rockville	1		St Josephs College Me	1
Northeastern University	1		Stonehill College	1
Quinsigamond CC	7		Syracuse University	1
Southern Maine CC	2		US Military Academy	1
Suny Univ At Buffalo	1		Univ Mass Amherst	1
Thiel College	1		Univ Mass Lowell	1
Univ Calif Riverside	1		Univ NH Durham	1
Univ Mass Boston	2		Univ Rhode Island	1
Univ Mass Dartmouth	2		Univ of El Salvadore	1
Univ Mass Lowell	1		Wesleyan University	1
Univ Nebraska Omaha	1		Western NE College	1
Univ NH Durham	2		Worcester State College	1
			York County CC	1

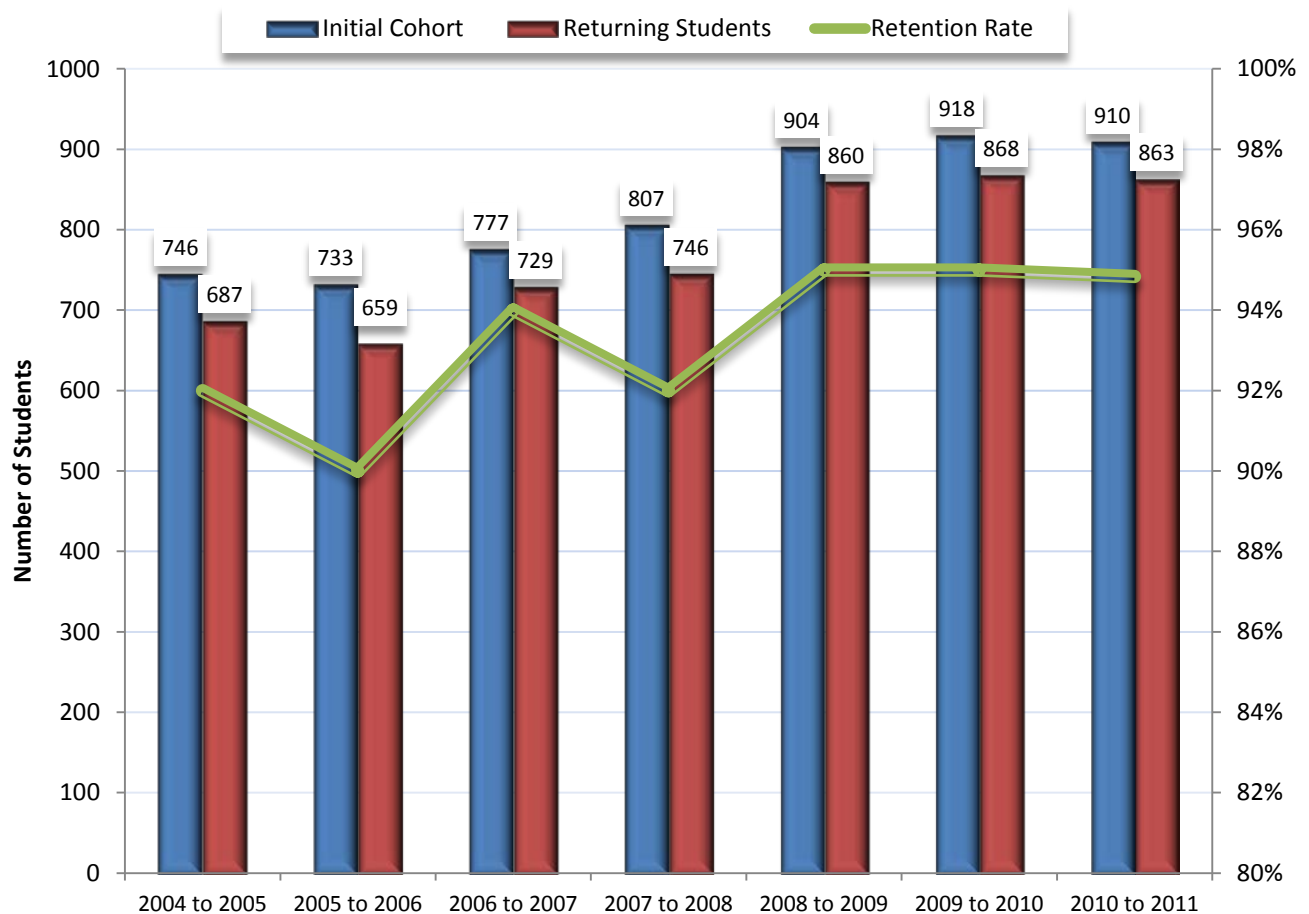
Transfers by Department & Major, Fall 2011

Department & Major	
Biology/ Biotechnology	4
Biomedical Engineering	2
Civil & Environmental Engr	4
Computer Science	1
Electrical & Computer Engr	6
Interdisciplinary Programs	4
Interactive Media & Game Dev	2
Robotics Engineering	2
Management	3
Industrial Engineering	1
Management	1
Management Engineering	1
Mechanical Engineering	17
Aerospace Engineering	4
Mechanical Engineering	13
Total	41

Undergraduate Retention Rates for Class Cohorts

CLASS OF:	2008	2009	2010	2011	2012	2013	2014	2015
ENTERED FALL:	2004	2005	2006	2007	2008	2009	2010	2011
COHORT / YEAR 1	746	733	777	807	904	918	910	1,005
	100%	100%	100%	100%	100%	100%	100%	100%
YEAR 2	687	659	729	746	860	868	863	
FR TO SO YR	92%	90%	94%	92%	95%	95%	95%	
YEAR 3	638	606	683	703	811	823		
FR TO JR YR	86%	83%	88%	87%	90%	90%		
YEAR 4	610	583	645	675	780			
FR TO SR YR	82%	80%	83%	84%	86%			
YEAR 5	49	69	58	71				
	7%	9%	7%	9%				
YEAR 6	12	23	14					
	2%	3%	2%					

Freshman to Sophomore Retention Rates, 2004 to 2011



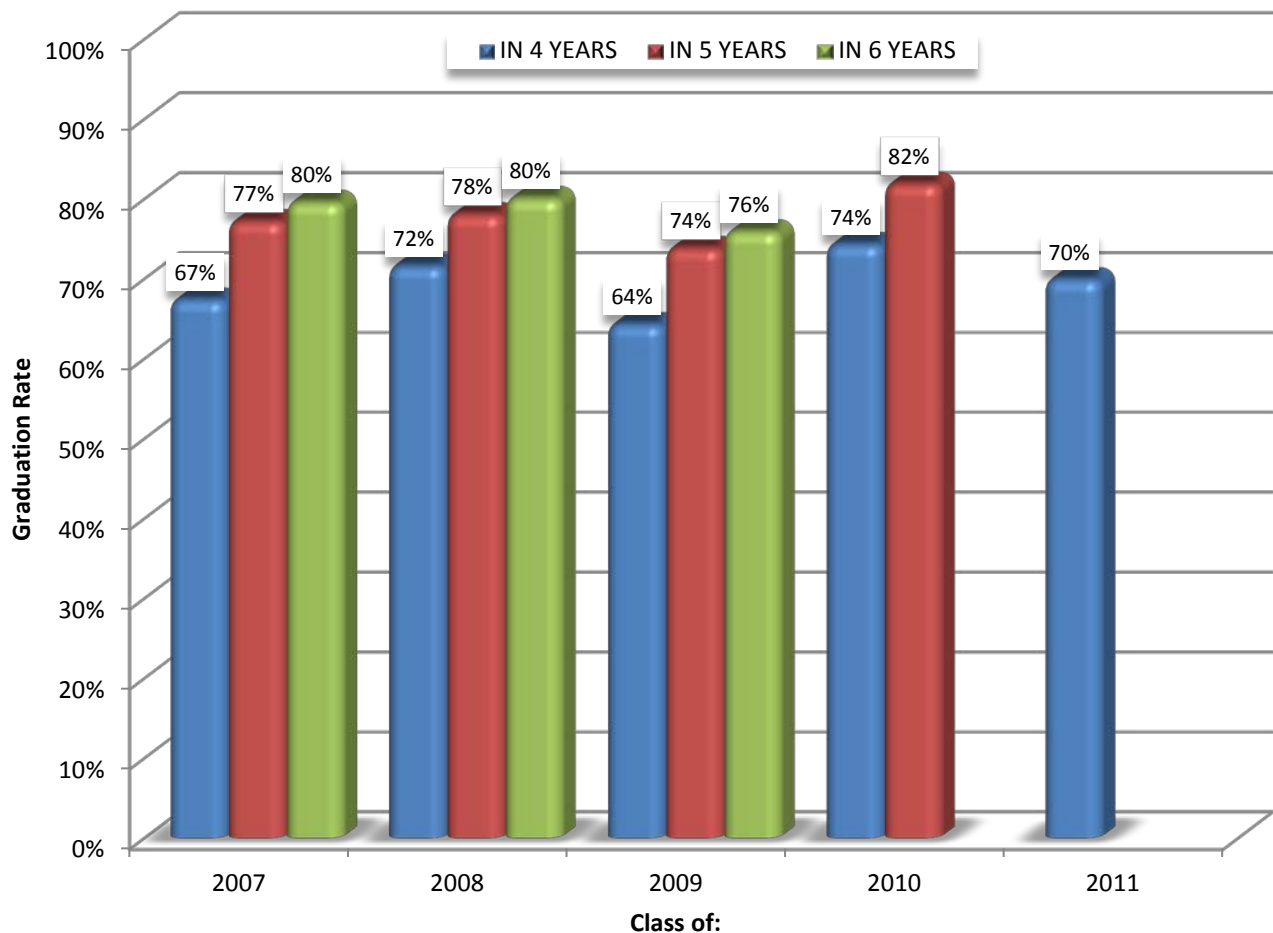
Undergraduate Graduation Rates for Class Cohorts

CLASS OF:	2007	2008	2009	2010	2011
ENTERED FALL:	2003	2004	2005 ²	2006	2007
COHORT	630	746	733	777	807
IN 4 YEARS¹	425	535	473	578	566
	67%	72%	65%	74%	70%
IN 5 YEARS	487	583	542	636	
	77%	78%	74%	82%	
IN 6 YEARS	502	598	559		
	80%	80%	76%		

¹Graduation by May of given year

²Cohort data updated in accordance with federal reporting guidelines

Undergraduate Graduation Rates, Classes of 2007 to 2011



Undergraduate Completions¹: Department & Major by Academic Year, 2007 to 2011

Department & Major	2006-07	2007-08	2008-09	2009-10	2010-11 ²
Biology/Biotechnology	45	54	51	47	52
Biomedical Engineering	38	50	37	42	56
Chemical Engineering	30	31	40	55	46
Chemistry and Biochemistry	16	34	29	39	34
Biochemistry	12	22	20	27	22
Chemistry	4	12	9	12	12
Civil & Environmental Eng	57	81	57	64	52
Computer Science	59	49	54	64	64
Electrical & Computer Eng	95	85	80	73	70
Humanities and Arts	3	5	5	1	6
Humanities and Arts	3	3	3	1	3
Liberal Arts & Engineering					1
Professional Writing		2	2		2
Interdisciplinary	2	13	37	53	60
Environmental Engineering		1	5	6	2
Interactive Media & Game Dev	1	11	26	35	23
Interdisciplinary	1		2	2	
International Studies		1	2		1
Robotics Engineering			2	10	34
Management	54	45	35	60	50
Industrial Engineering	15	12	8	17	18
Management	4	6	3	5	3
Management Engineering	14	11		22	20
Management Information Systems	21	16	9	16	9
Management w/ Computer Appl.			15		
Mathematical Sciences	14	21	19	25	23
Actuarial Mathematics	9	11	9	17	16
Mathematical Sciences	5	10	10	8	7
Mechanical Engineering	145	182	156	178	172
Aerospace Engineering	17	14	15	28	31
Manufacturing Engineering	6	8	2	2	
Mechanical Engineering	122	160	139	148	141
Physics	9	20	12	12	13
Engineering Physics	3	1		1	1
Physics	6	19	12	11	12
Social Science/Policy Studies	4	6	3	7	9
Economic Science		1	1		1
Environ & Sustain Studies			1		3
Environmental Policy & Development			1	1	
Psychological Science	1	1		1	2
Society, Technology & Policy	3	3		2	1
System Dynamics		1		3	2
Total	571	676	615	720	707

¹First degrees only

²Includes one BA/BS dual degree; both majors/degrees shown

FALL 2011: GRADUATE

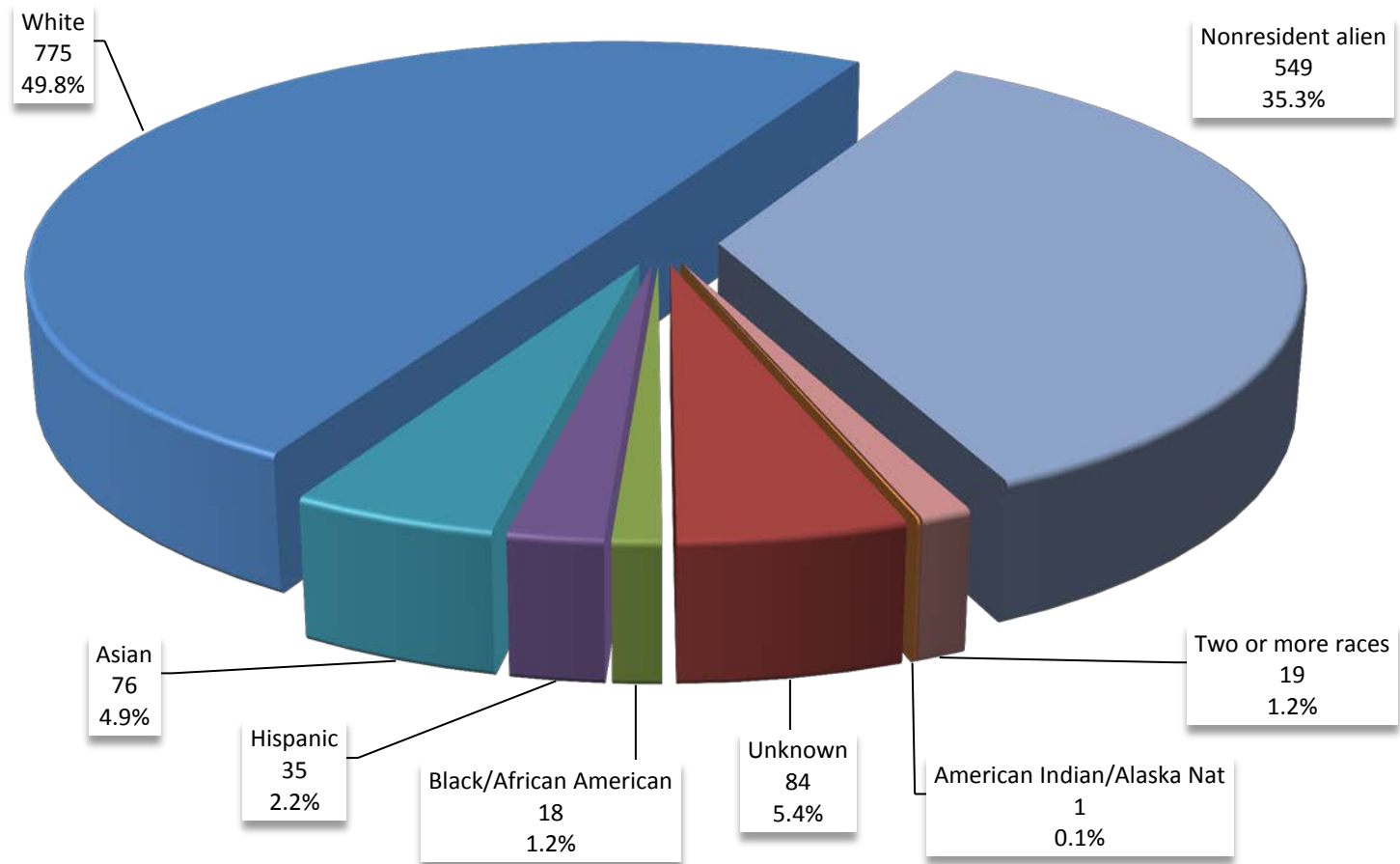
Full- & Part-Time¹ Degree-Seeking Graduate Enrollment by Race/Ethnicity & Gender, Fall 2011

Headcount							
Race/Ethnicity	Full-Time		Part-Time		Total		Grand Total
	Female	Male	Female	Male	Female	Male	
Nonresident alien	146	247	53	103	199	350	549
Hispanic/Latino	4	4	9	18	13	22	35
American Indian/Alaska Native	0	0	1	0	1	0	1
Asian	6	12	9	49	15	61	76
Black/African American	0	5	3	10	3	15	18
Native Hawaiian/Other Pacific Islander	0	0	0	0	0	0	0
White	48	129	112	486	160	615	775
Two or more races	2	2	2	13	4	15	19
Race/ethnicity unknown	1	7	18	58	19	65	84
Totals	207	406	207	737	414	1,143	1,557
% of Category	33.8%	66.2%	21.9%	78.1%	26.6%	73.4%	100%

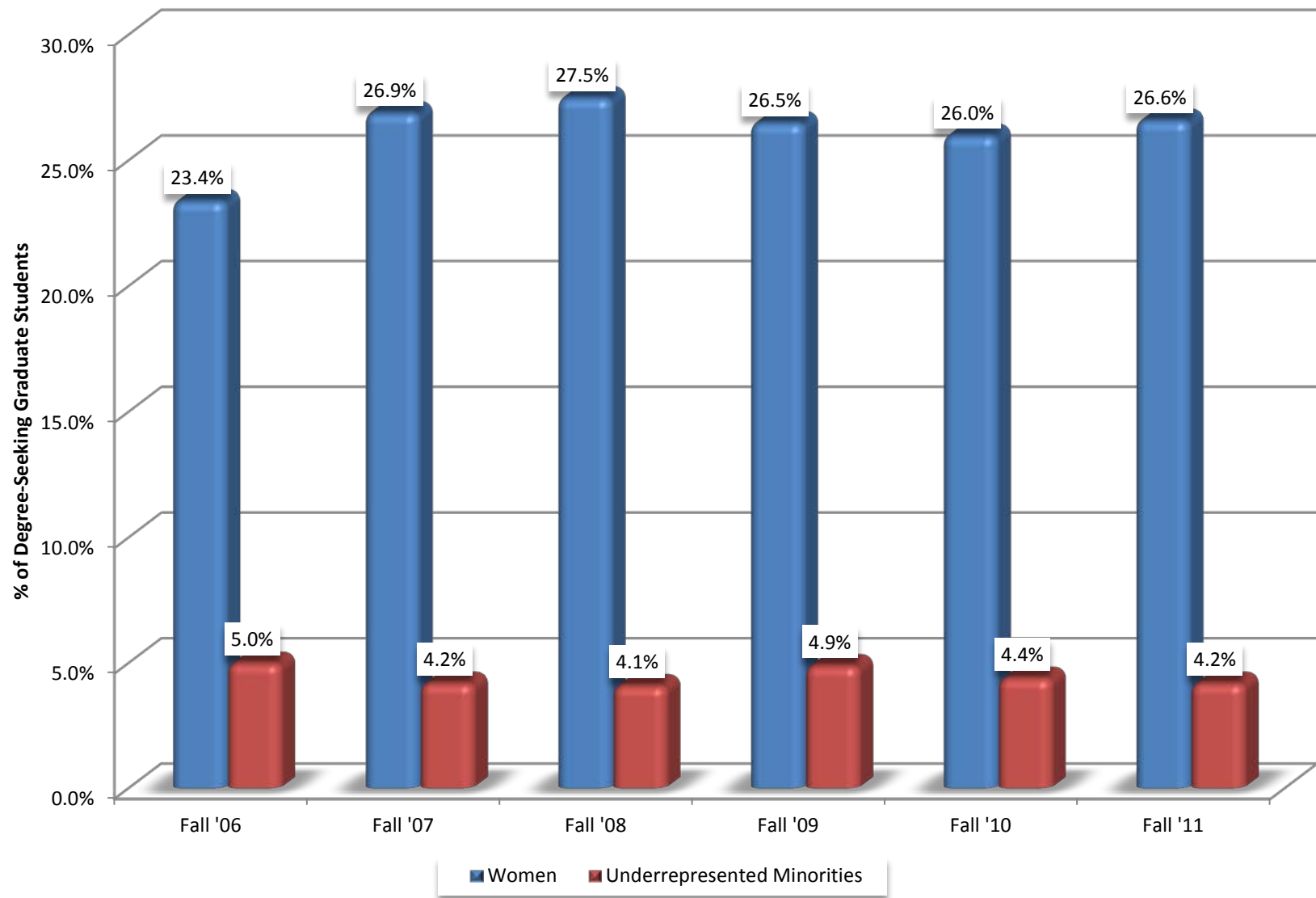
Percent							
Race/Ethnicity	Full-Time		Part-Time		Total		Grand Total
	Female	Male	Female	Male	Female	Male	
Nonresident alien	70.5%	60.8%	25.6%	14.0%	48.1%	30.6%	35.3%
Hispanic/Latino	1.9%	1.0%	4.3%	2.4%	3.1%	1.9%	2.2%
American Indian/Alaska Native	0%	0%	0.5%	0%	0.2%	0%	0.1%
Asian	2.9%	3.0%	4.3%	6.6%	3.6%	5.3%	4.9%
Black/African American	0%	1.2%	1.4%	1.4%	0.7%	1.3%	1.2%
Native Hawaiian/Other Pacific Islander	0%	0%	0%	0%	0%	0%	0%
White	23.2%	31.8%	54.1%	65.9%	38.6%	53.8%	49.8%
Two or more races	1.0%	0.5%	1.0%	1.8%	1.0%	1.3%	1.2%
Race/ethnicity unknown	0.5%	1.7%	8.7%	7.9%	4.6%	5.7%	5.4%
Totals	100%	100%	100%	100%	100%	100%	100%

¹ Full-Time Graduate >= 9 credits; Part-Time Graduate < 9 credits [IPEDS Glossary, pg. 29]

Full- & Part-Time Degree-Seeking Graduate Students by Race/Ethnicity, Fall 2011



Full- & Part-Time Degree-Seeking Graduate Students 2006 to 2011: Women & Underrepresented Minorities



Full- & Part-Time Degree-Seeking Graduate Enrollment by Department & Major, Fall 2011

Department & Major	Full-Time					Part-Time								Total
	MBA	MENGR	MS	PHD	Total	AC	GC	MBA	MENGR	MME	MS	PHD	Total	
Biology/Biotechnology			4	9	13						2	3	5	18
Biology and Biotechnology			4	4	8						2	1	3	11
Biotechnology				5	5							2	2	7
Biomedical Engineering		7	15	12	34				2		16	4	22	56
Chemical Engineering			7	11	18						2	5	7	25
Chemistry and Biochemistry				14	14		2				12	2	16	30
Biochemistry				5	5									5
Bioscience Administration							2				12		14	14
Chemistry				9	9							2	2	11
Civil & Environmental Eng		1	17	7	25	1	1		3		14	3	22	47
Civil Engineering		1	16	7	24	1	1		3		12	3	20	44
Construction Project Mgmt.			1		1						2		2	3
Computer Science			33	26	59		1				33	16	50	109
Electrical & Computer Eng		6	73	22	101		3		5		94	12	114	215
Fire Protection Engineering			27	6	33		1				62	3	66	99
Interdisciplinary Programs			24	9	33		25		1		214	2	242	275
Environmental Engineering			3		3						27		27	30
Interactive Media & Game Dev			3		3						2		2	5
Interdisciplinary				1	1		6				5	1	12	13
Learning Sciences & Technology			2	4	6									6
Power Systems Management							6		1		36		43	43
Robotics Engineering			16	4	20						11	1	12	32
Systems Engineering							13				133		146	146
Management	27		81		108		11	143			52		206	314
Information Technology			22		22						15		15	37
Management			1		1		11				14		25	26
Marketing & Tech. Innovation	1		41		42						16		16	58
Master of Business Admin.	25				25			143					143	168
Operations Design & Leadership	1		17		18						7		7	25
Mathematical Sciences			38	14	52					12	15	5	32	84
Applied Mathematics			2		2						1		1	3
Applied Statistics			7		7						3		3	10
Financial Mathematics			26		26						11		11	37
Industrial Mathematics			3		3									3
Master of Mathematics for Educ										12			12	12
Mathematical Sciences				14	14							5	5	19
Mechanical Engineering			85	27	112		8				125	16	149	261
Manufacturing Engineering			10	2	12		7				14	3	24	36
Materials Process Eng			1		1						6		6	7
Materials Science and Eng			30	9	39						17	5	22	61
Mechanical Engineering			44	16	60		1				88	8	97	157
Physics			1	10	11						3	3	6	17
Social Science/Policy Studies							2				5		7	7
System Dynamics							2				5		7	7
Total	27	14	405	167	613	1	54	143	11	12	649	74	944	1,557

Full-Time¹ Graduate Students: Race/Ethnicity & Gender by Major, Fall 2010

	Headcounts																				
	Female										Male										
	Nonresident alien	Hispanic/ Latino	Amer. Indian/ Alaska Native	Asian	Black/African American	Nat. Hawaiian/ Pac. Islander	White	Two or more races	Race/ethnicity unknown	Total Women	Nonresident alien	Hispanic/ Latino	Amer. Indian/ Alaska Native	Asian	Black/African American	Nat. Hawaiian/ Pac. Islander	White	Two or more races	Race/ethnicity unknown	Total Men	Grand Total
Department & Major																					
Biology/Biotechnology	4			1			4			9	1						3			4	13
Biology and Biotechnology	1			1			4			6							2			2	8
Biotechnology	3									3	1						1			2	5
Biomedical Eng							8			8	7			4			14		1	26	34
Chemical Eng	4			1			1			6	5						7			12	18
Chemistry and Biochemistry	3						4	1		8	3			1			2			6	14
Biochemistry	1						2			3	2									2	5
Chemistry	2						2	1		5	1			1			2			4	9
Civil & Environmental Eng	5						3	1		9	7						9			16	25
Civil Eng	4						3	1		8	7						9			16	24
Construction Project Mgmt.	1									1											1
Computer Science	10			1			1			12	28			1	1		14	1	2	47	59
Electrical & Computer Eng	27	1								28	59	1		1	1		11			73	101
Fire Protection Eng							5			5	8	1					18		1	28	33
Interdisciplinary Programs	1	1		1			2			5	10	1			1		16			28	33
Environmental Eng																	3			3	3
Interactive Media & Game Dev											1						2			3	3
Interdisciplinary											1									1	1
Learning Sciences & Technology	1			1						2							4			4	6
Robotics Eng		1					2			3	8	1			1		7			17	20

¹Full-Time Graduate >= 9 credits [IPEDS Glossary, pg. 29]

Full-Time¹ Graduate Students: Race/Ethnicity & Gender by Major, Fall 2010 (cont.)

	Headcounts																				
	Female										Male										
	Nonresident alien	Hispanic/ Latino	Amer. Indian/ Alaska Native	Asian	Black/African American	Nat. Hawaiian/ Pac. Islander	White	Two or more races	Race/ethnicity unknown	Total Women	Nonresident alien	Hispanic/ Latino	Amer. Indian/ Alaska Native	Asian	Black/African American	Nat. Hawaiian/ Pac. Islander	White	Two or more races	Race/ethnicity unknown	Total Men	Grand Total
Department & Major																					
Management	58	1		1			4			64	36			2			6			44	108
Information Technology	7			1			1			9	12						1			13	22
Management																	1			1	1
Marketing & Tech. Innovation	33						1			34	6						2			8	42
Master of Business Admin.	6	1					2			9	12			2			2			16	25
Oper Design & Leadership	12									12	6									6	18
Mathematical Sciences	15	1					6		1	23	24						4		1	29	52
Applied Mathematics																	2			2	2
Applied Statistics	2						1			3	4									4	7
Financial Mathematics	12						1			13	13									13	26
Industrial Mathematics		1					2			3											3
Mathematical Sciences	1						2		1	4	7						2		1	10	14
Mechanical Eng	18			1			8			27	57	1		3	2		20	1	1	85	112
Manufacturing Eng							1			1	10	1								11	12
Materials Process Eng											1									1	1
Materials Science and Eng	12			1			2			15	22			1	1					24	39
Mechanical Eng	6						5			11	24			2	1		20	1	1	49	60
Physics	1						2			3	2						5		1	8	11
Total	146	4		6			48	2	1	207	247	4		12	5		129	2	7	406	613

¹Full-Time Graduate >= 9 credits [IPEDS Glossary, pg. 29]

Part-Time¹ Graduate Students: Race/Ethnicity & Gender by Major, Fall 2011

Department & Major	Headcounts																			
	Female										Male									
	Nonresident alien	Hispanic/ Latino	Amer. Indian/ Alaska Native	Asian	Black/African American	Nat. Hawaiian/ Pac. Islander	White	Two or more races	Race/ethnicity unknown	Total Women	Nonresident alien	Hispanic/ Latino	Amer. Indian/ Alaska Native	Asian	Black/African American	Nat. Hawaiian/ Pac. Islander	White	Two or more races	Race/ethnicity unknown	Total Men
Biology/Biotechnology	3			1						4							1			1
Biology and Biotechnology	1			1						2							1			1
Biotechnology	2									2										2
Biomedical Eng				1	1		3			5	5			1			11			17
Chemical Eng		1								1	2			1			3			6
Chemistry and Biochemistry	1			1			1		1	4		1		1			8		2	12
Bioscience Administration				1			1		1	3		1		1			7		2	11
Chemistry	1									1							1			1
Civil & Environmental Eng	2		1				5			8	2	1		1	1		8	1		14
Civil Eng	2		1				5			8	2	1		1	1		6	1		12
Construction Project Mgmt.																	2			2
Computer Science	4	1					1			6	9			4			28	1	2	44
Electrical & Computer Eng	4	1		2			8	1		16	19	4		13	2		57	1	2	98
Fire Protection Eng	6	1					9			16	6			2			41		1	50
Interdisciplinary Programs	1	2		2			27		5	37	4	5		11	3		153	2	27	205
Environmental Eng							6			6	1			1			18		1	21
Interactive Media & Game Dev																	2			2
Interdisciplinary							2			2		1					9			10
Power Systems Mgmt.	1						3		1	5	2	1		1			24	1	9	38
Robotics Eng							1			1				1	1		9			11
Systems Eng		2		2			15		4	23	1	3		8	2		91	1	17	123
Grand Total																				

¹Part-Time Graduate < 9 credits [IPEDS Glossary, pg. 29]

Part-Time¹ Graduate Students: Race/Ethnicity & Gender by Major, Fall 2011 (cont.)

Department & Major	Headcounts																			
	Female										Male									
	Nonresident alien	Hispanic/Latino	Amer. Indian/Alaska Native	Asian	Black/African American	Nat. Hawaiian/Pac. Islander	White	Two or more races	Race/ethnicity unknown	Total Women	Nonresident alien	Hispanic/Latino	Amer. Indian/Alaska Native	Asian	Black/African American	Nat. Hawaiian/Pac. Islander	White	Two or more races	Race/ethnicity unknown	Total Men
Management	13	1			1		31	1	8	55	24	2		9	3		93	6	14	151
Information Technology	3						1			4	7						4			11
Management	1						2		6	9	2							5	9	16
Marketing & Tech. Innovation	6						1			7	4				1		4			9
Master of Business Admin.	2	1			1		24	1	2	31	11	2		9	2		82	1	5	112
Oper Design & Leadership	1						3			4							3			3
Mathematical Sciences	8						9		1	18	5	2			1		6			14
Applied Mathematics																	1			1
Applied Statistics	1									1	1				1					2
Financial Mathematics	6									6	4						1			5
Master of Math for Educ							9		1	10							2			2
Mathematical Sciences	1									1		2					2			4
Mechanical Eng	10	2		2			17		2	33	24	3		6			73	2	8	116
Manufacturing Eng	1	1		1			4		1	8	3						9		4	16
Materials Process Eng	1						3			4							2			2
Materials Science and Eng	3			1			1		1	6	10			2			3		1	16
Mechanical Eng	5	1					9			15	11	3		4			59	2	3	82
Physics					1					1	3						2			5
Social Science/Policy Studies	1						1		1	3							2		2	4
System Dynamics	1						1		1	3							2		2	4
Total	53	9	1	9	3		112	2	18	207	103	18		49	10		486	13	58	737

¹Part-Time Graduate < 9 credits [IPEDS Glossary, pg. 29]

Full- & Part-Time Degree-Seeking Graduate Enrollment by Major, Fall 2007 to Fall 2011

Department & Major	2007	2008	2009	2010	2011
Biology/Biotechnology	19	17	20	17	18
Biology and Biotechnology	13	10	11	10	11
Biotechnology	6	7	9	7	7
Biomedical Engineering	46¹	42	41	49	56
Biomedical Eng/Medical Physics	6	2	1	-	-
Biomedical Engineering	39	40	40	49	56
Chemical Engineering	17	21	24	27	25
Chemistry and Biochemistry	14	14	20	27	30
Biochemistry	2	4	1	2	5
Bioscience Administration	-	-	4	12	14
Chemistry	12	10	15	13	11
Civil & Environmental Eng	39	41	50	62	47
Civil Engineering	33	36	44	54	44
Construction Project Mgmt.	6	5	6	8	3
Computer Science	108	99	104	108	109
Electrical & Computer Eng	132	131	152	208	215
Fire Protection Engineering	75	96	112	103	99
Interdisciplinary Programs	96	103	159	191	275
Environmental Engineering	19	21	26	26	30
Interactive Media & Game Dev	-	-	-	-	5
Interdisciplinary	77	75	63	50	13
Learning Sciences & Technology	-	-	-	-	6
Materials Systems Engineering	-	-	1	-	-
Power Systems Management	-	2	15	24	43
Robotics Engineering	-	-	4	13	32
Systems Engineering	-	5	50	78	146
Management	143	178	192	247	314
Information Technology	27	45	50	41	37
Management	1	-	-	-	26
Management of Technology	1	2	1	1	-
Marketing & Tech. Innovation	9	16	23	47	58
Master of Business Admin.	90	94	92	138	168
Operations & Information Tech.	2	2	1	-	-
Operations Design & Leadership	13	19	25	20	25
Mathematical Sciences	61	55	64	75	84
Applied Mathematics	7	6	6	4	3
Applied Statistics	7	8	3	11	10
Financial Mathematics	8	11	19	26	37
Industrial Mathematics	2	2	1	0	3
Master of Mathematics for Education	21	14	22	20	12
Mathematical Sciences	16	14	13	14	19
Mechanical Engineering	128	159	189	218	261
Manufacturing Engineering	16	31	45	32	36
Materials Process Eng	1	2	1	6	7
Materials Science and Eng.	20	35	43	45	61
Mechanical Engineering	91	91	100	135	157
Physics	15	15	14	14	17
Social Science/Policy Studies	18	17	12	8	7
System Dynamics	18	17	12	8	7
Total	911	988	1,153	1,354	1,557

¹Includes one Clinical Engineering Student

Graduate Completions: Department & Major by Academic Year, 2005 to 2011

Department & Major	2004-05		2005-06		2006-07		2007-08		2008-09		2009-10		2010-11	
	MAST	PHD	MAST	PHD	MAST	PHD	MAST	PHD	MAST	PHD	MAST	PHD	MAST	PHD
Biology/Biotechnology	2		6	2	4		6		4		4	1	3	
Biology and Biotechnology	2		6		4		6		4		4		3	
Biomedical Sciences				2										
Biotechnology												1		
Biomedical Engineering	6	1	10		14	1	14	2	17	2	16	1	14	4
Biomedical Engineering	6		10		14		14	1	17		16	1	14	2
Biomedical Eng/Medical Physics		1				1		1		2				2
Clinical Engineering					1									
Chemical Engineering	6	2	3	4	4	4	4	1	4	1	3	2	8	1
Chemistry and Biochemistry	2	2	6	1	2	2			6	2	4	2	5	
Biochemistry	1		2		2				3		1		1	
Bioscience Administration											3		4	
Chemistry	1	2	4	1		2			3	2		2		
Civil & Environmental Eng	9	3	16		18		15	1	11	2	20	2	19	1
Civil Engineering	7	3	12		15		14	1	11	2	16	2	17	1
Construction Project Management	2		4		3		1				4		2	
Computer Science	59	2	41	7	49	4	37	3	35	2	25	4	29	2
Electrical & Computer Eng	48	1	35	4	39	6	52	4	49	5	46	8	89	6
Fire Protection Engineering	17	2	29	1	33		27		32		36	1	32	
Interdisciplinary	8	1	27		25	1	50		28		50		51	
Environmental Engineering	7		8		6		8		7		6		7	
Interdisciplinary	1	1	19		19	1	42		19		16			
Materials Process Engineering									2					
Materials Systems Engineering													1	
Power Systems Management											2		9	
Robotics Engineering													2	
Systems Engineering											26		32	

Graduate Completions: Department & Major by Academic Year, 2005 to 2011 (cont.)

Department & Major	2004-05		2005-06		2006-07		2007-08		2008-09		2009-10		2010-11	
	MAST	PHD	MAST	PHD	MAST	MAST	MAST	PHD	MAST	PHD	MAST	PHD	MAST	PHD
Management	45		27		33		35		26		69		75	
Information Technology											22		25	
Marketing & Tech. Innovation	7		4		6		6		5		10		17	
Master of Business Admin.	22		14		18		19		18		23		23	
Operations Design & Leadership			2		5		8		2		13		10	
Operations & Information Tech.	16		7		4		2		1		1			
Mathematical Sciences	15		21	1	21	1	16	2	29	1	21	2	25	1
Applied Mathematics			5		3		3		7		5		2	
Applied Statistics	4		7		5		1		5		3		3	
Financial Mathematics	6		2		3		3		5		7		13	
Industrial Mathematics			1				1				2			
Master of Mathematics for Educators	5		6		10		8		12		4		7	
Mathematical Sciences				1		1		2		1		2		1
Mechanical Engineering	32	4	45	7	50	7	61	2	55	9	85	9	89	4
Manufacturing Engineering	10	1	8	1	7	1	6		13	1	23	3	14	2
Materials Science and Eng	3	1	6	1	1		4	1	6	2	14	5	14	1
Mechanical Engineering	19	2	31	5	42	6	51	1	36	6	48	1	61	1
Physics	3	4	1	3	5	1	5	3	1	1	3	2	1	2
Social Science/Policy Studies					4		1		2		2		6	
System Dynamics					4		1		2		2		6	
Total	252	22	267	30	301	27	323	18	299	25	384	34	446	21
All Levels Total	274		297		328		341		324		418		467	