

# Welcome to the Virtual STEM Meet-up!

If you are new, welcome! Please tell us in the chat where you are joining us from.

- Participants are being **muted** upon entry
- To **talk**, please 'unmute' yourself
- Use the **chat** feature to ask questions or communicate with any one of the participants
- Click on the '**participants**' button to raise hand, vote, or sign
- To get out of full screen (click the **View Options** menu at the top of the screen and choose 'exit full screen')



**WPI**

STEM  
Education  
Center



**WPI**

# **Virtual STEM Meet Up**

***The STEM Education Center at WPI***

**Donna Taylor; Mia Dubosarsky**

**Shari Weaver; Kathy Chen**

# Past Tools/Resources Shared



- Edutopia – <https://www.edutopia.org/>  
<https://www.edutopia.org/article/teaching-strategies-award-winning-online-instructors>
- TeachEngineering - <https://www.teachengineering.org/>
- PBS Learning Media - <https://mass.pbslearningmedia.org/>
- Padlet - <https://padlet.com/>
- OkGoSandbox – <https://okgosandbox.org/>
- Daily DE- <https://den.discoveryeducation.com/participate/dailyde>
- NSTA Daily Do's - <https://www.nsta.org/dailydo/>
- Science Friday - <https://www.sciencefriday.com/>
- Scoutlier - <https://www.aecern.com/>



**WPI**

STEM  
Education  
Center

# Agenda



- Introduction
- PD Certificate reminder
- Explore 2 STEM Resources
  - DESE Announcements – *presented by Donna*
  - NGSS Phenomena – *presented by Mia & Donna*
- Breakout discussions @ today's resources
- Group discussion - share successes, challenges, and ideas
- Closing



**WPI**

STEM  
Education  
Center

# PD Certificates

In order to receive a PD Certificate for the Virtual STEM Meet-up, you must...

- 1) Complete and Submit the Google Form - <https://forms.gle/JicXbxutpqXN7fUo8>
- 2) Be in attendance on the date(s) listed

**Note:** Attendees will receive a PD Certificate for 1 hr per session submitted with a reflection. Presenters will receive 1.5 hrs for the session presented to account for their planning time

Please have all reflections submitted by June 11<sup>th</sup>.  
PD Certificates will be e-mailed before the end of June.



**WPI**

STEM  
Education  
Center

# *What is your favorite part of Spring?*



Let's draw together! If you are unable to access the whiteboard, write what you would like to add in the chat and Kathy, Mia or Shari will add it to the group artwork.



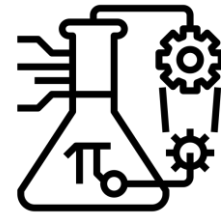
**WPI**

STEM  
Education  
Center



# WPI

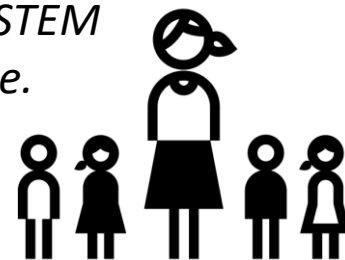
STEM  
Education  
Center



**Transforming STEM education** for all in collaboration with PK-12 educators through professional development, research, and community engagement

*We believe that everyone has the capacity to participate in doing STEM, and that **everyone should have access to high-quality STEM learning experiences.** We seek systemic ways to broaden the participation of STEM, especially those that have been historically excluded in STEM, and work with others towards equity in education.*

*Our work is **informed by current research** and by the **lived experiences of educators**, learners, and community members. We contribute to the advancement of STEM education as researchers and practitioners in order to continuously improve.*



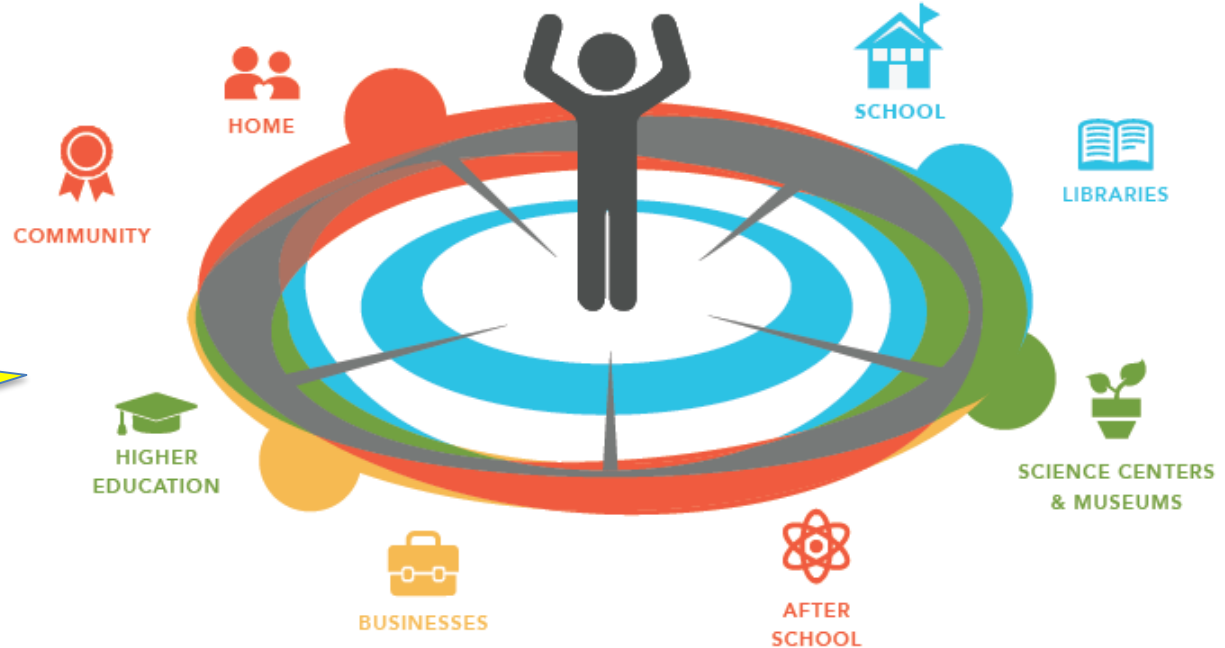
Envisioning a world in which **educators are empowered** to guide *relevant, integrated, and inclusive STEM* with their students & community

# We work towards sustainable systemic change with partners and stakeholders



<http://wp.wpi.edu/cmsn>

STEM Together  
Design Challenge!



ADDRESSING THE NATION'S STEM TEACHER SHORTAGE





What will Summer PD look like?

<https://bit.ly/3bOrbYt>

# STEM Teacher Resources

<https://www.wpi.edu/academics/stem-education-center/teacher-resources>



DESE Updates:

<http://www.doe.mass.edu/covid19/learn-at-home.html>

*(Presented by Donna)*

Phenomena for NGSS:

<https://www.ngssphenomena.com/>

*(Presented by Mia and Donna)*

PHENOMENA FOR NGSS





<https://www.youtube.com/watch?v=Dnk0Be4a0aw>

# Let's check it out!

Breakout Rooms by subject area & grade level:

Add the code in front of your name on your photo

Example: HS Donna Taylor

**EM** = Elem. Math

**MM** = Middle School Math

**HM** = High School Math

**ES** = Elem. Science

**MS** = Middle School Science

**HS** = High School Science

**EST** = Elem. STEM

**MST** = Middle School STEM

**HST** – High School STEM

Once in the room...

Together, choose one of the phenomena to explore.

Take time to explore and talk about possible uses remotely or in the classroom.

Choose someone to share out with the whole group when we come back together.

# Closing

Please complete our online survey (*link in chat box*) to let us know if this experience was useful and ways that it can be improved in future sessions.

[https://wpi.qualtrics.com/jfe/form/SV\\_3t7GH67chCFwx5r](https://wpi.qualtrics.com/jfe/form/SV_3t7GH67chCFwx5r)

Our goal is to help you be more successful as you delve into this challenging educational endeavor.

Best of Luck to everyone – please don't hesitate to reach out to us if you have any questions or need guidance:

- Donna Taylor – [dltaylor@wpi.edu](mailto:dltaylor@wpi.edu)
- Mia Dubosarsky – [mdubosarsky@wpi.edu](mailto:mdubosarsky@wpi.edu)
- Shari Weaver – [sweaver@wpi.edu](mailto:sweaver@wpi.edu)
- Kathy Chen – [kcchen@wpi.edu](mailto:kcchen@wpi.edu)



**WPI**

STEM  
Education  
Center