

Welcome to the Virtual STEM Meet-up!

If you are new, welcome! Please tell us in the chat where you are joining us from.

- Participants are being **muted** upon entry
- To **talk**, please 'unmute' yourself
- Use the **chat** feature to ask questions or communicate with any one of the participants
- Click on the '**participants**' button to raise hand, vote, or sign
- To get out of full screen (click the **View Options** menu at the top of the screen and choose 'exit full screen')



WPI

STEM
Education
Center



WPI

Virtual STEM Meet Up

The STEM Education Center at WPI

Donna Taylor; Mia Dubosarsky

Shari Weaver; Kathy Chen

Past Tools/Resources Shared



- Edutopia – <https://www.edutopia.org/>
<https://www.edutopia.org/article/teaching-strategies-award-winning-online-instructors>
- TeachEngineering - <https://www.teachengineering.org/>
- PBS Learning Media - <https://mass.pbslearningmedia.org/>
- Padlet - <https://padlet.com/>
- OkGoSandbox – <https://okgosandbox.org/>
- Daily DE- <https://den.discoveryeducation.com/participate/dailyde>
- NSTA Daily Do's - <https://www.nsta.org/dailydo/>
- Science Friday - <https://www.sciencefriday.com/>
- Scoutlier - <https://www.aecern.com/>
- DESE Updates – <http://www.doe.mass.edu/covid19/learn-at-home.html>
- NGSS Phenomena - <https://www.ngssphenomena.com/>
- Story Jumper - <https://www.storyjumper.com/>
- Wide Open School - <https://wideopenschool.org/>
- EdPuzzle - <https://edpuzzle.com/>
- TryEngineering - <https://tryengineering.org/>



WPI

STEM
Education
Center

Agenda



- Introduction
- PD Certificate reminder
- Explore 2 STEM Resources
 - Go Formative – *presented by Laura*
 - Global Design Squad – *presented by Donna*
- Breakout discussions @ today's resources
- Group discussion - share successes, challenges, and ideas
- Closing



WPI

STEM
Education
Center

PD Certificates

In order to receive a PD Certificate for the Virtual STEM Meet-up, you must...

- 1) Complete and Submit the Google Form - <https://forms.gle/JicXbxutpqXN7fUo8>
- 2) Be in attendance on the date(s) listed

Note: Attendees will receive a PD Certificate for 1 hr per session submitted with a reflection. Presenters will receive 1.5 hrs for the session presented to account for their planning time

Please have all reflections submitted by June 11th.
PD Certificates will be e-mailed before the end of June.



WPI

STEM
Education
Center

While self-isolating, many of us have had to celebrate special events in new ways. (Were we engineering??)

What special event(s) have you recently celebrated?



WPI

STEM
Education
Center

1 Graduation

<https://www.dailybulletin.com/>



<https://www.chicagotribune.com>



<https://www.boredpanda.com>



2 Birthday



3 Anniversary



4 Birth of a Child



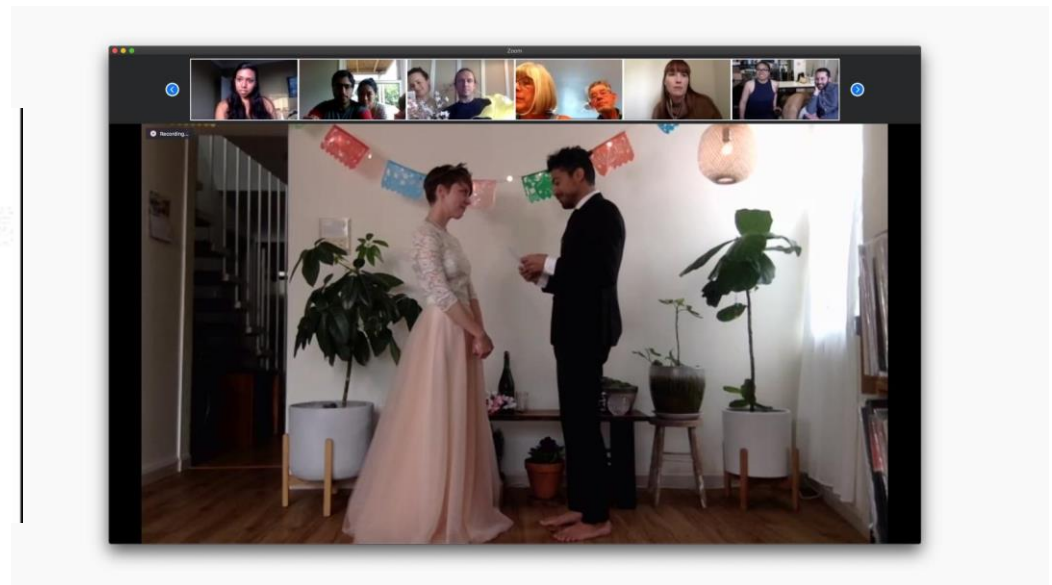
5 Wedding



**QUARANTINE
WEDDING
DURING THE
CORONAVIRUS
OUTBREAK WITH
ANASTASIJA
AND JOSH**



**GETTING MARRIED
MULTICULTURALLY
PODCAST #58**



What special event have you recently celebrated in a unique way?



Please enter your answer in the Poll or in the Chat
(if difficulties with poll)





WPI

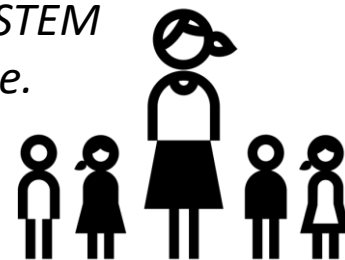
STEM
Education
Center



Transforming STEM education for all in collaboration with PK-12 educators through professional development, research, and community engagement

*We believe that everyone has the capacity to participate in doing STEM, and that **everyone should have access to high-quality STEM learning experiences**. We seek systemic ways to broaden the participation of STEM, especially those that have been historically excluded in STEM, and work with others towards equity in education.*

*Our work is **informed by current research** and by the **lived experiences of educators**, learners, and community members. We contribute to the advancement of STEM education as researchers and practitioners in order to continuously improve.*



Envisioning a world in which **educators are empowered** to guide *relevant, integrated, and inclusive STEM* with their students & community



STEM Together Webinar Series and a YouTube Playlist



STEM Together

3 videos • 21 views • Updated yesterday

Unlisted ▾



No description



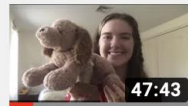
CMSN STEM

≡ SORT BY



STEM Together with the EcoTarium: Launch It! (May 6, 2020)

CMSN STEM



STEM Together with WPI Engineering Ambassadors - Designing Prosthetics (May 13, 2020)

CMSN STEM



STEM Together with Adam Zelny (Westborough Com Ed) - Cardboard Creations

CMSN STEM

<https://wp.wpi.edu/cmsn/stem-together-design-challenge/>



WPI Engineering Ambassadors: Designing Prosthetics for stuffed animals





nmantemi + 9 3d

STEM Together - Prosthetics

Check out these awesome prosthetic designs!

Adam Zelny 3d

Dinah the Dino's over-the-shoulder prosthetic by Donald and Adam.

99% Donald's design. There was a great learning opportunity as we talked about why cushioning is so important where the prosthetic meets Dinah's skin. Thanks!



2

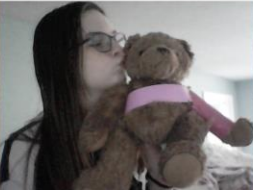
1 comment

K Chen 3d
Very important design consideration!

Add comment

Anonymous 8d

berry the bear fixes her leg



3

1 comment

K Chen 8d
great photo!

Add comment

K Chen 8d

Friends feeling much better!



1

Add comment

Anonymous 8d

Noogie finally had his arm back.



2

1 comment

K Chen 8d
Nice job!

Add comment

Anonymous 8d

Ellie had a wonderful time during this workshop! Thank you!



2

1 comment

K Chen 8d
wonderful colors!

Add comment

Anonymous 8d

prostedic leg

0

Add comment

Anonymous 8d

A Hyena boot, after losing a battle to Simba!

Brown felt to blend with fur, tube to stabilize break, bottom is a "shoe" to protect the exposed paw while walking



1

1 comment

K Chen 8d
great job with the hyena boot!

Add comment

K Chen 8d

Template

Tell us about your stuffed animal that you designed a prosthetic for, and include a drawing or picture, if you'd like!

1

Add comment

K Chen 8d

Roary with prosthetics



2

Add comment

K Chen 8d

Satchi Jr.



2

Add comment

Anonymous 8d

Woof-Woof's new leg :)



2

Add comment

Anonymous 8d

Kaplan will be roaming in the jungle in no time



2

1 comment

K Chen 8d
Great, he can join Roary! See ya in the jungle!

Add comment

Adam Zelny - Cardboard Creations: Phone Stand



STEM Teacher Resources

<https://www.wpi.edu/academics/stem-education-center/teacher-resources>



Go Formative:

<https://goformative.com/>

(Presented by Laura Cintron)



Global Design Squad:

<https://pbskids.org/designsquad/>

(Presented by Donna)

Let's check it out!

Breakout Rooms by grade band:

Add the code in front of your name on your photo

Example: ES Donna Taylor

ES = Elem. School

MS = Middle School

HS = High School

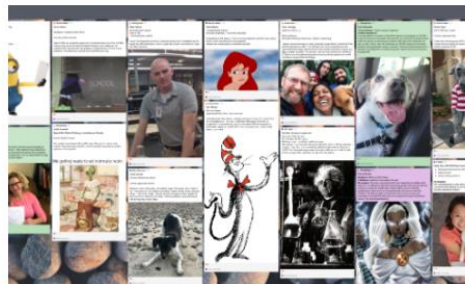
Once in the room...

Together, choose one of the resources to explore. Take time to explore and talk about possible uses online or in the classroom.

Choose someone to share out with the whole group when we come back together.

What will Summer PD look like?

wpi.edu/+pd



Online STEM Teaching: Meeting the Needs of all Learners

Need to enhance your online teaching skills to better meet the needs of all of your students? With this set of introductory and advanced workshops, you can do just that! There's even a PD specifically for administrators/coaches. Check them out!

[➤ LEARN MORE ABOUT THIS PROGRAM](#)



STEM/STEAM Projects

Looking for new STEM or STEAM project ideas to incorporate into your classroom? Look no further! Explore challenges aligned with grade-level standards and follow the steps of the engineering design process to solve them. Always an educator favorite!

[➤ LEARN MORE ABOUT THIS PROGRAM](#)



Seeds of STEM

Problem Panda has a LOT of problems! Step into the shoes of a preschool student and experience this hands-on approach to doing STEM with young children. Explore the Seeds of STEM curriculum binder and color images, and discuss with other educators how to implement this year-long curriculum in your classroom.

[➤ LEARN MORE ABOUT THIS PROGRAM](#)



STEM Educator Certificate Course

Earn a STEM Certificate from WPI! Join us on a journey to design a high-quality integrated STEM Challenge that aligns with STEM standards of your choice. This course is great for in-school educators, out-of-school educators, and coaches of all grade levels. It's one of a kind!

[➤ LEARN MORE ABOUT THIS PROGRAM](#)



Assessments Re-imagined

Transform the way you look at assessment practices. Re-imagine and redesign your current assessments to meet critical elements of high quality, while collaborating with grade-level colleagues. Assessing will never be so clear!

[➤ LEARN MORE ABOUT THIS PROGRAM](#)



Project Based Learning Institute

Immerse yourself in PBL! Work together with your educator team to dive deeper into the understanding of project-based learning. Let us guide you to plan real-world, high-quality PBL experiences for your students.

[➤ LEARN MORE ABOUT THIS PROGRAM](#)

Closing

Please complete our online survey (*link in chat box*) to let us know if this experience was useful and ways that it can be improved in future sessions.

https://wpi.qualtrics.com/jfe/form/SV_3t7GH67chCFwx5r

Our goal is to help you be more successful as you delve into this challenging educational endeavor.

Best of Luck to everyone – please don't hesitate to reach out to us if you have any questions or need guidance:

- Donna Taylor – dltaylor@wpi.edu
- Mia Dubosarsky – mdubosarsky@wpi.edu
- Shari Weaver – sweaver@wpi.edu
- Kathy Chen – kcchen@wpi.edu



WPI

STEM
Education
Center