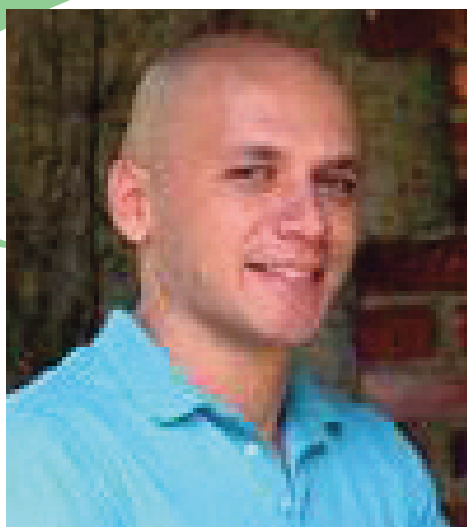


CENTER FOR RESOURCE RECOVERY AND RECYCLING

Graduate Seminar Lecture Series

Life after WPI: Challenges of working in an international company



Kimon Symeonidis, PhD
Process Engineer
VICTAULIC
Easton, Pennsylvania

Kimon Symeonidis earned his BS in materials science from the National Technical University of Athens, Greece. He received his doctorate in mechanical engineering at Worcester Polytechnic Institute, where he was a member of Pi Tau Sigma and Sigma Xi. He later became a postdoctoral researcher and an adjunct assistant professor. He is currently conducting metallurgical studies on new products and processes as well as failure analyses to determine the root cause.

Friday, February 24, 2012
Salisbury Laboratories, Room 305, 11am

Kimon Symeonidis is currently working in the Process Technology Department of Victaulic, world leader in mechanical pipe joining systems. The company was founded in 1925 to market a radical new concept in the piping industry—a mechanical bolted coupling that would engage into pipe grooves and use a gasket seal. Victaulic competes in the world's most demanding markets, including oil, gas, chemical, mining, marine, and fire protection. Its diverse portfolio presents a multitude of challenges to the engineers that must adapt quickly to new materials and new processes and, in turn, adapt them to the company's interest.